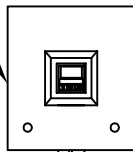
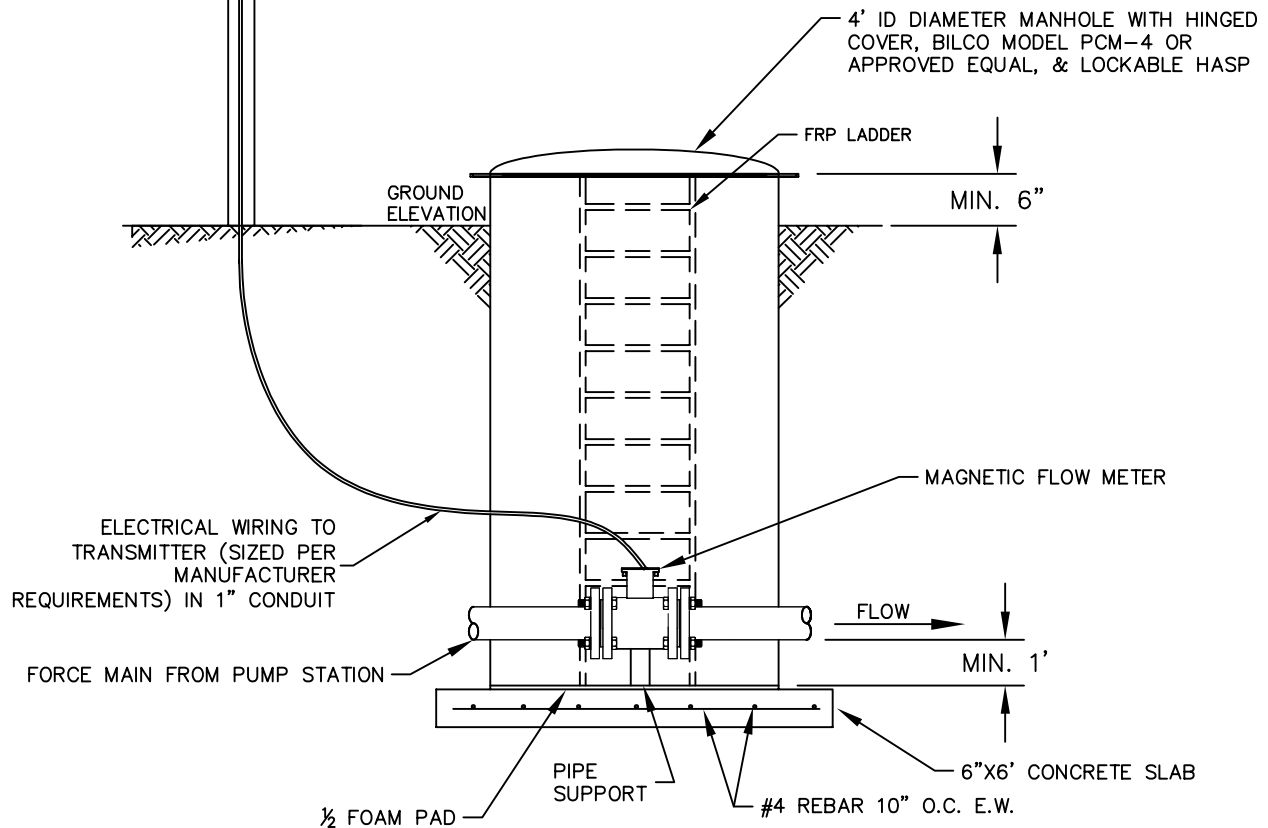


TRANSMITTER WITH  
DIGITAL READOUT



#### NOTES:

1. ENCLOSURE MATERIAL SHALL BE FRP (FIBERGLASS REINFORCED POLYESTER)
2. NEOPRENE BOOTS SHALL BE SECURED WITH STAINLESS STEEL BANDS.
3. THE MANHOLE BARREL SHALL BE  $\frac{1}{2}$ " (MIN.) THICKNESS.
4. ALL HARDWARE SHALL BE TYPE 304 STAINLESS STEEL.
5. HINGED COVER IS NOT SHOWN THIS VIEW FOR CLARITY SEE DETAILED SPECIFICATIONS
6. INSTALL TOTALIZER AND MESSENGER UNDER RAIN HOOD PER MOORE COUNTY SPECIFICATIONS.

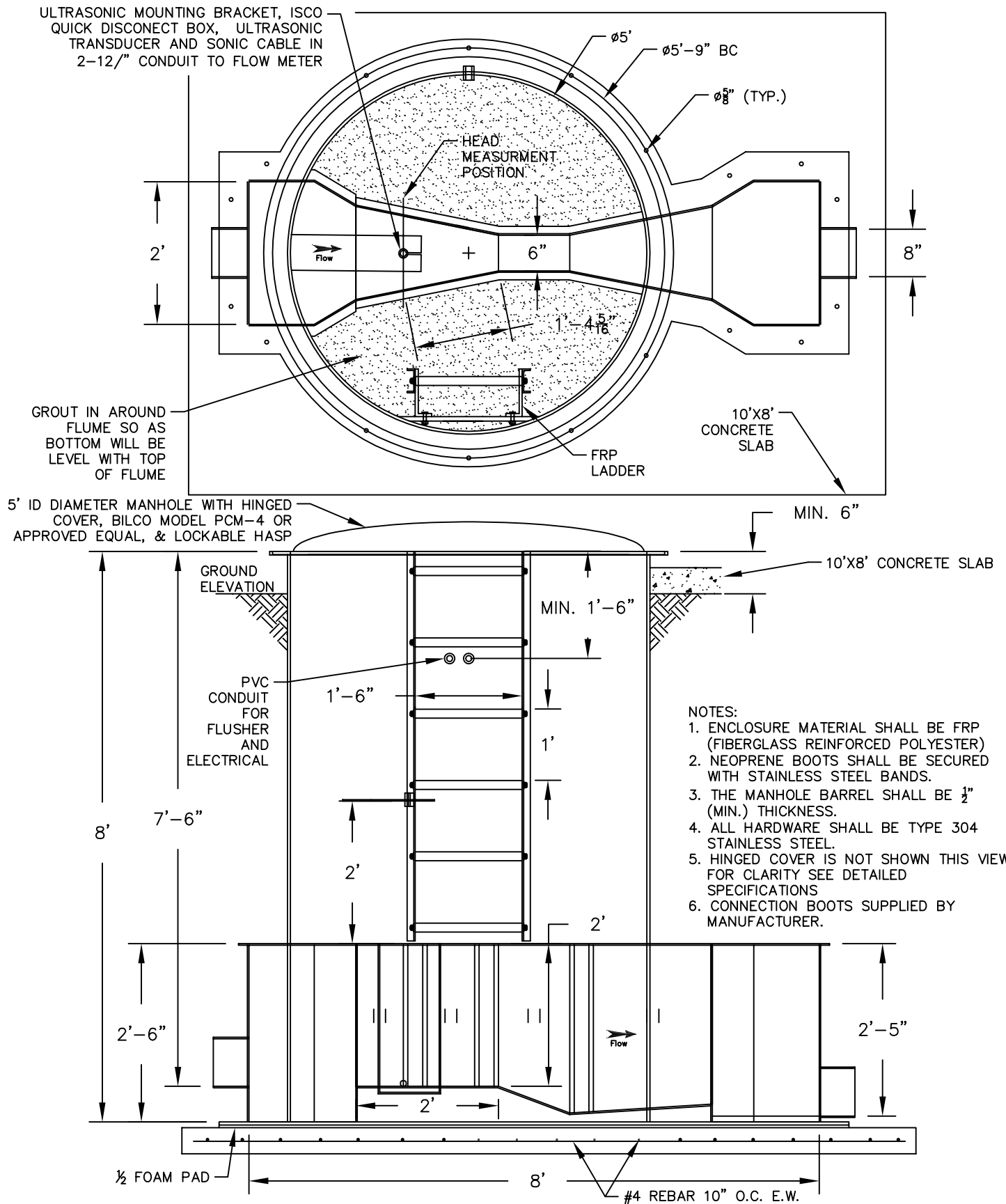


REVISED	
DATE	DESCRIPTION

MOORE COUNTY PUBLIC WORKS  
ENGINEERING DIVISION

**MAG METER MANHOLE**

STD NO.  
FMS-1

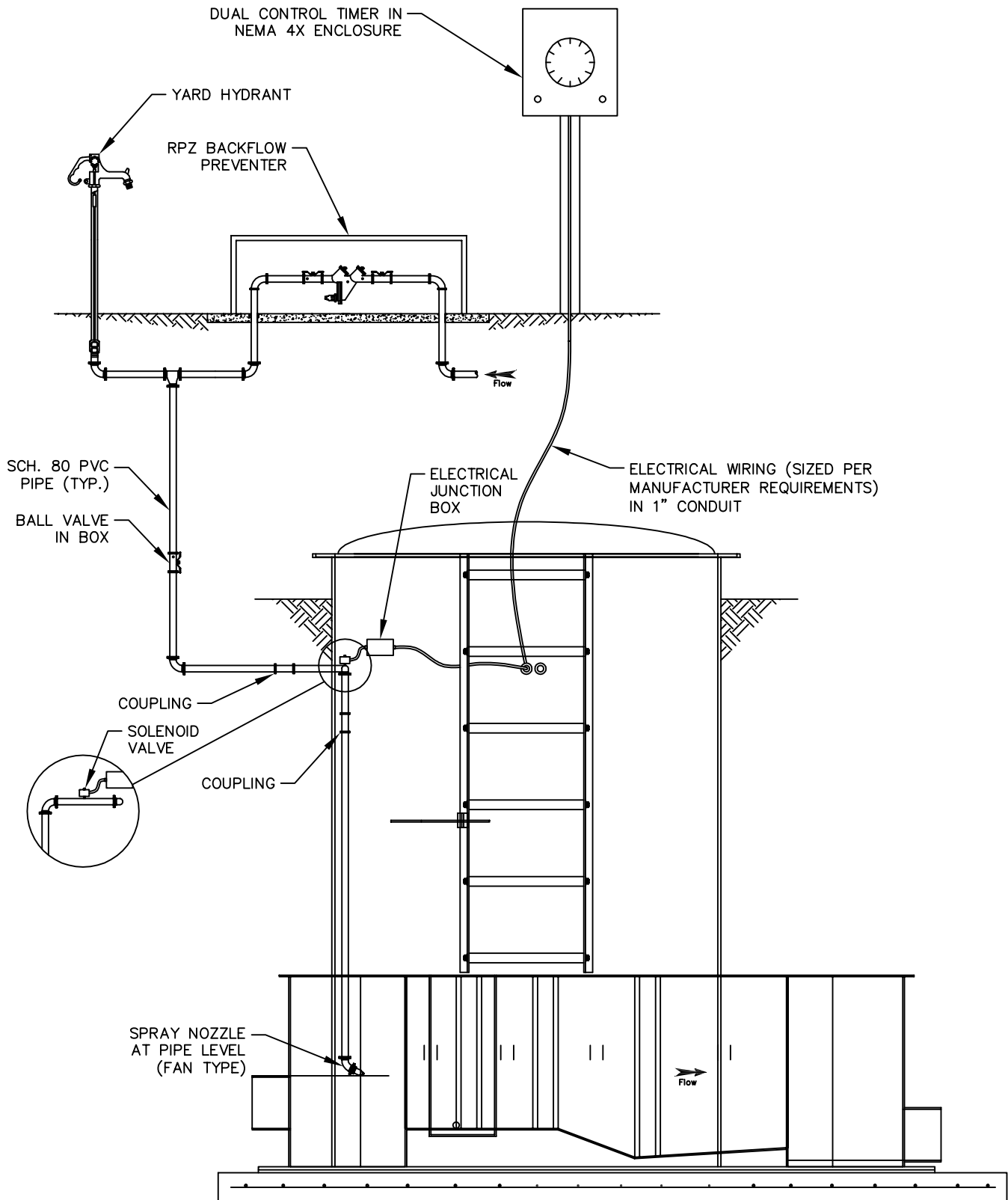


REVISED	
DATE	DESCRIPTION

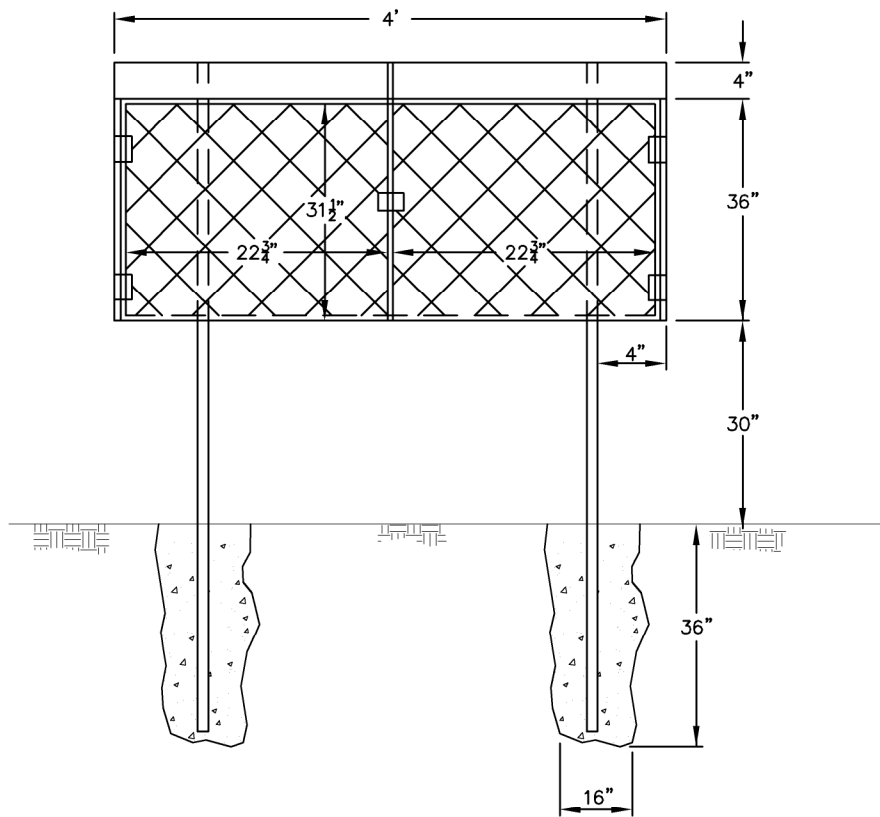
MOORE COUNTY PUBLIC WORKS  
ENGINEERING DIVISION

**PARSHALL FLUME MANHOLE**

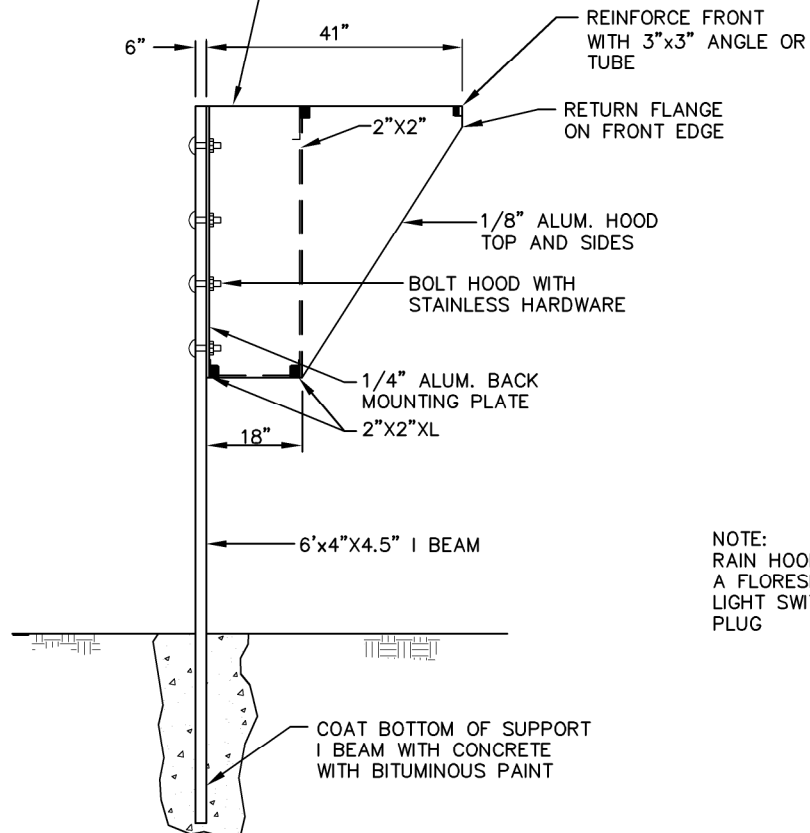
STD NO.  
FMS-2



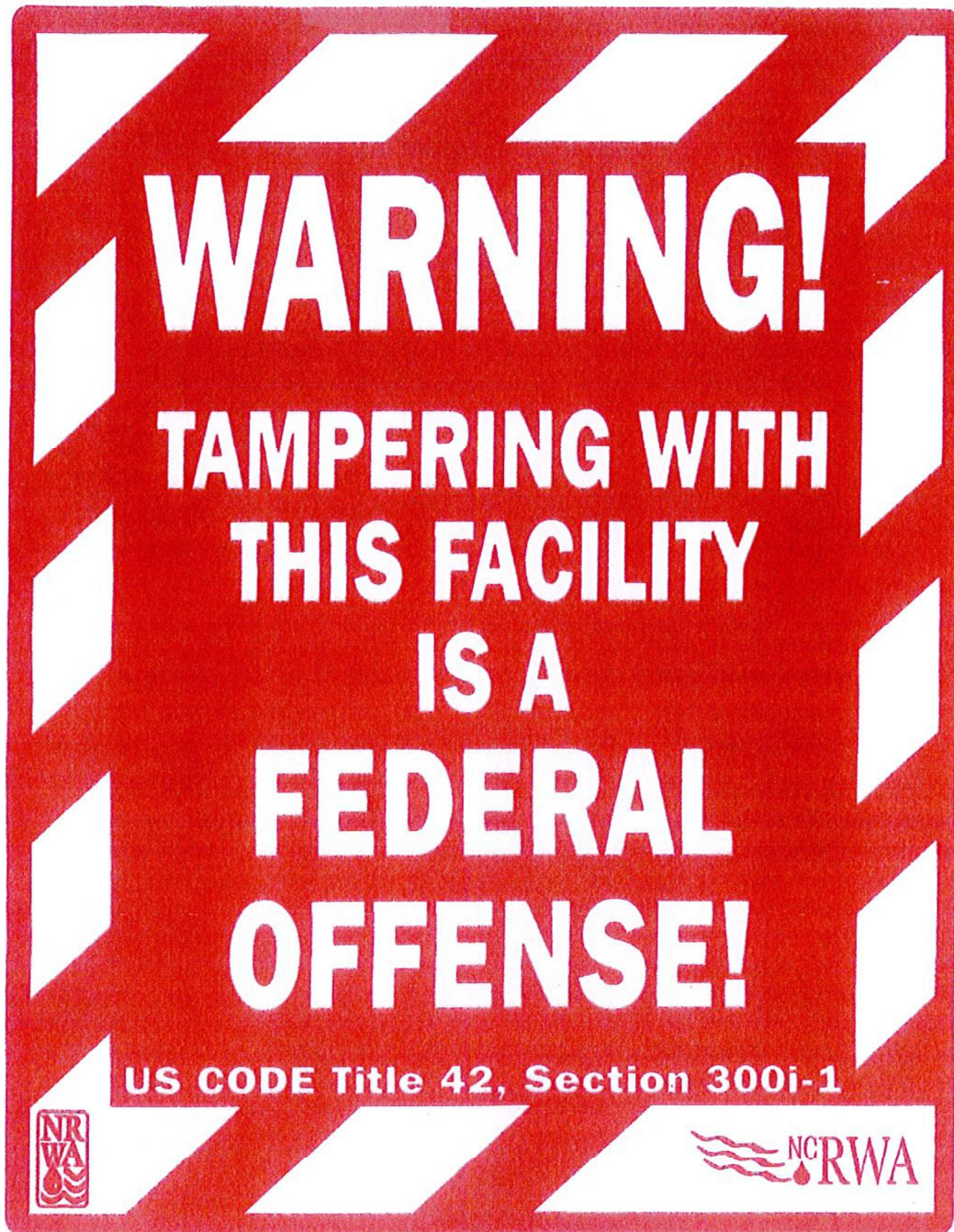
REVISED		MOORE COUNTY PUBLIC WORKS ENGINEERING DIVISION	PARSHALL FLUME FLUSHER	STD NO.  FMS-3
DATE	DESCRIPTION			



CROSS BREAK TOP UP AS  
NEEDED



REVISED		MOORE COUNTY PUBLIC WORKS ENGINEERING DIVISION	RAIN HOOD	STD NO.  FMS-4
DATE	DESCRIPTION			



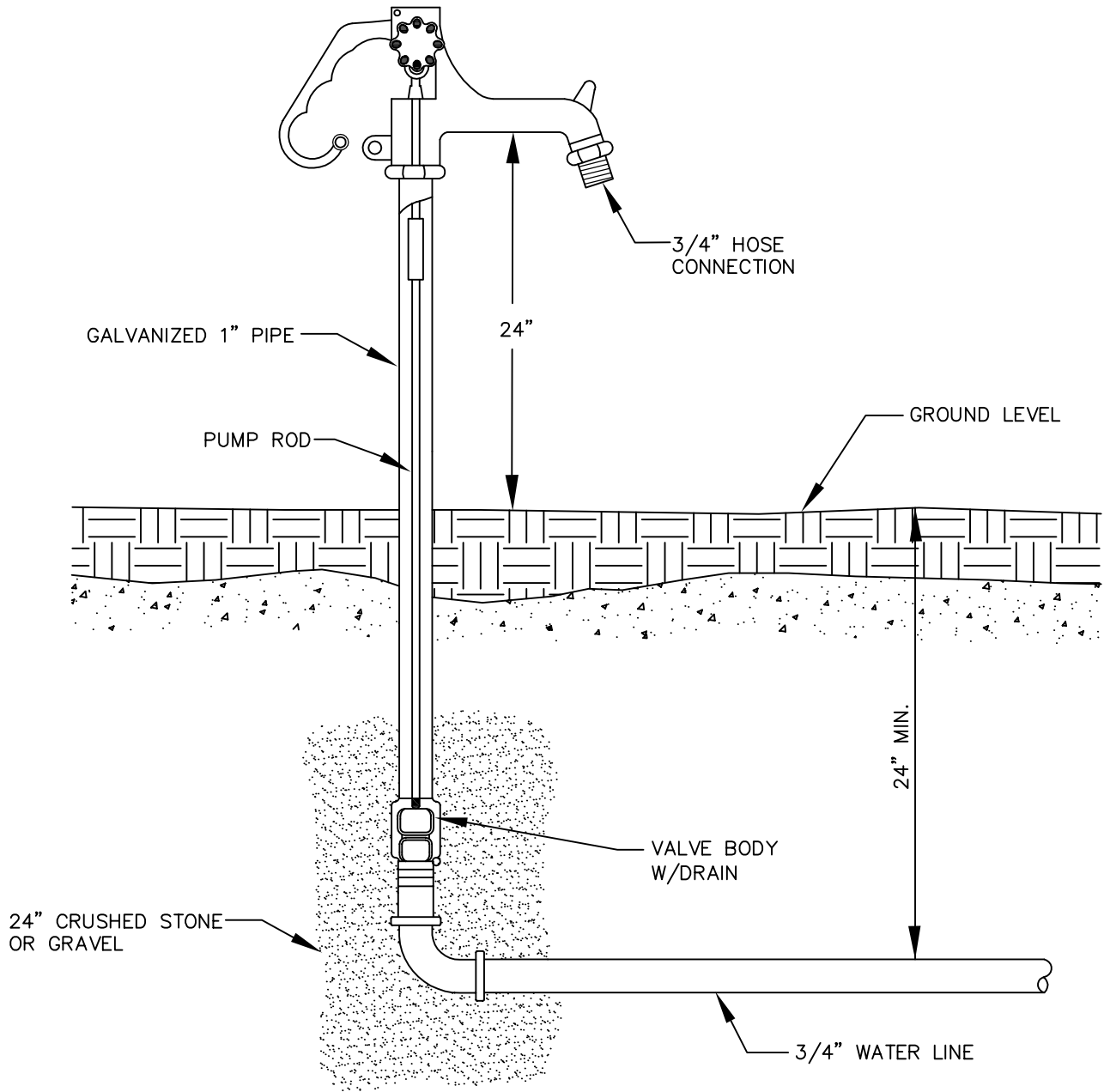
**REPORT SUSPICIOUS ACTIVITY TO:**

REVISED		MOORE COUNTY PUBLIC WORKS ENGINEERING DIVISION	SAFETY PLACARD	STD NO.  FMS-5
DATE	DESCRIPTION			



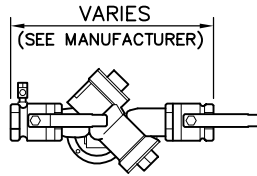
**MOORE COUNTY  
PUBLIC UTILITIES  
910-281-3146  
(Station Name #(Number))  
MONITORING  
STATION**

REVISED		MOORE COUNTY PUBLIC WORKS ENGINEERING DIVISION	IDENTIFICATION SIGN	STD NO.  FMS-6
DATE	DESCRIPTION			



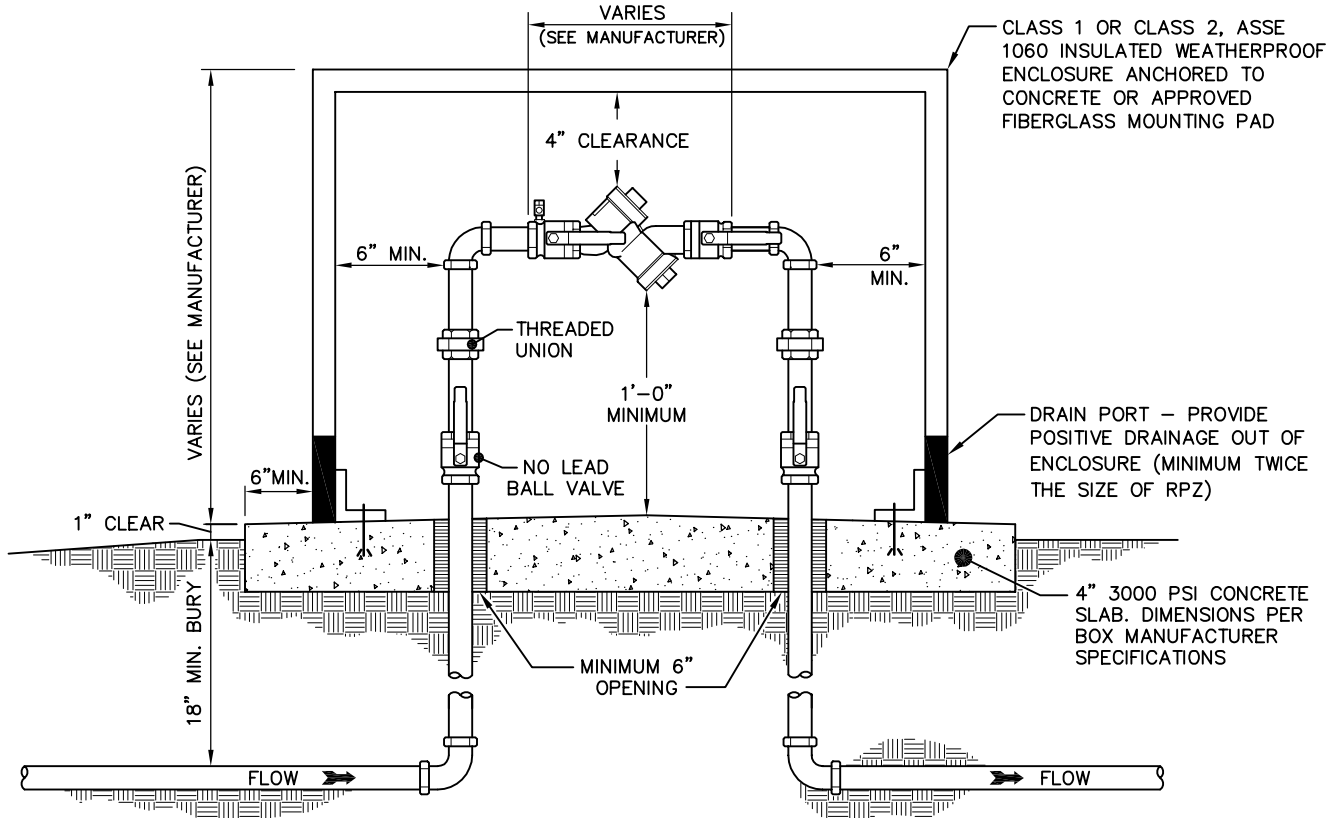
REVISED		MOORE COUNTY PUBLIC WORKS ENGINEERING DIVISION	YARD HYDRANT NON - FREEZE	STD NO.  FMS-7
DATE	DESCRIPTION			

# NO LEAD REDUCED PRESSURE PRINCIPLE BACKFLOW PREVENTION ASSEMBLY



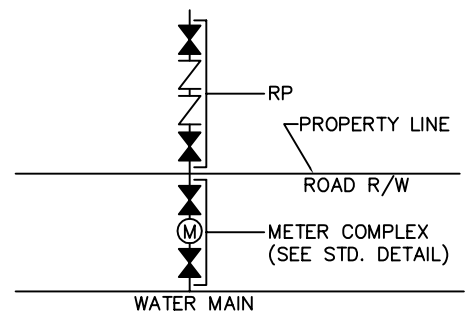
OR

## NO LEAD DOUBLE CHECK VALVE BACKFLOW PREVENTION ASSEMBLY



### NOTE:

1. REDUCED PRESSURE PRINCIPLE BACKFLOW PREVENTION (RPZ) ASSEMBLY MUST CONFORM TO MCPW SPECIFICATIONS FOR BACKFLOW PREVENTION ASSEMBLIES  $\frac{3}{4}$ " - 2".
2. MCPW APPROVED RPZ'S INCLUDE SHUT OFF VALVE #1 AND #2 AS PART OF THE ASSEMBLY. NO SUBSTITUTIONS SHALL BE PERMITTED.
3. TEST COCK #1 SHALL BE UPSTREAM OF SHUT OFF VALVE #1 AND IS PART OF THE APPROVED ASSEMBLY. ALL TEST COCKS MUST BE ON ONE SIDE OR TOP. ASSEMBLIES SHALL BE INSTALLED UPRIGHT AND IN THE HORIZONTAL POSITION.
4. IF OUTDOOR INSTALLATION HAS PROTECTIVE COVER, IT SHALL BE AS SPECIFIED BY MCPW SPECIFICATIONS.
5. ABOVE GROUND INSTALLATIONS MUST BE LOCATED OUTSIDE ZONING SETBACK AREAS.
6. PROTECTIVE COVER TO HAVE A DRAIN PORT TWICE THE SIZE AS THE WATER MAIN.



REVISED		MOORE COUNTY PUBLIC WORKS ENGINEERING DIVISION	REDUCED PRESSURE ZONE ASSEMBLY ABOVE GROUND (RPZ) $\frac{3}{4}$ " - 2"	STD NO.  FMS - 8
DATE	DESCRIPTION			