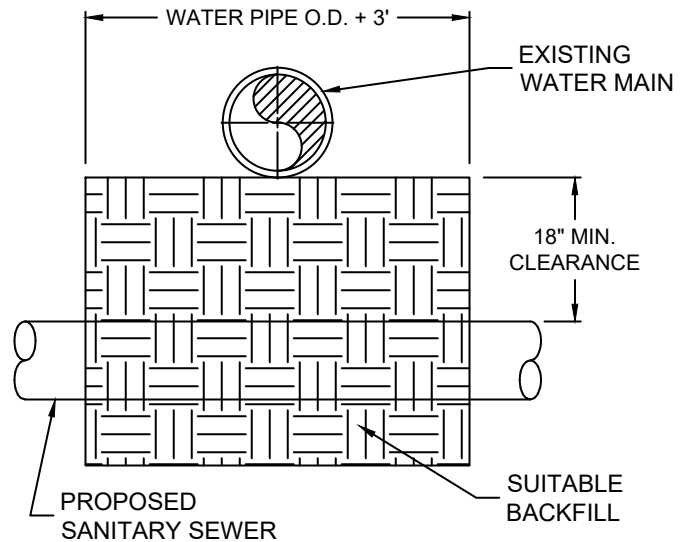
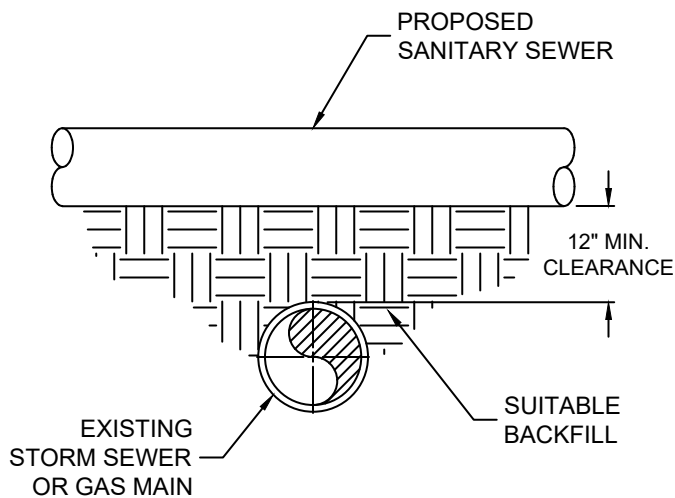


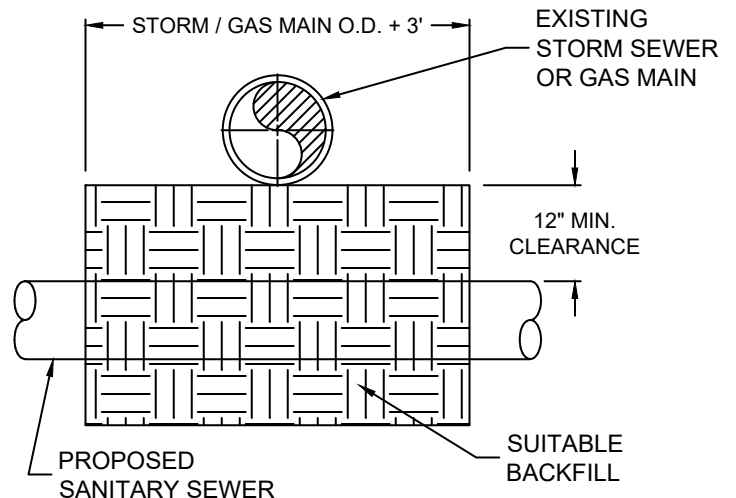
SANITARY SEWER OVER WATER MAIN
(APPROVAL REQ. FROM COUNTY ENGINEER)



SANITARY SEWER UNDER WATER MAIN



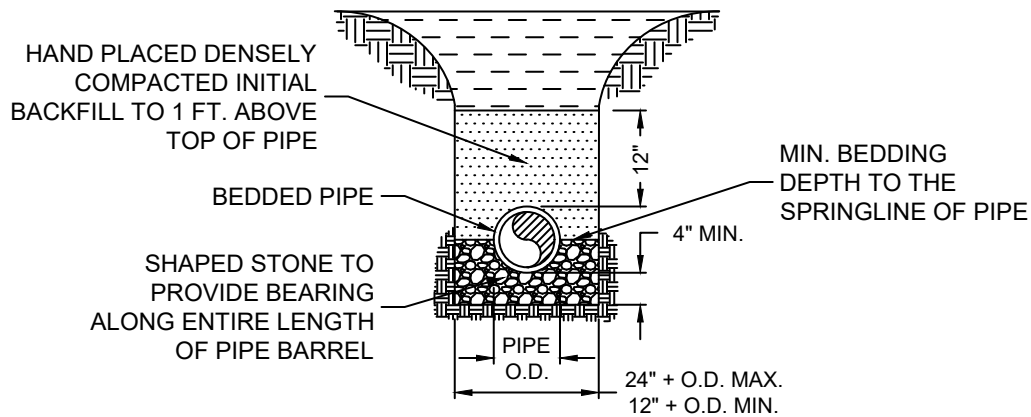
SANITARY SEWER OVER STORM SEWER / GAS MAIN



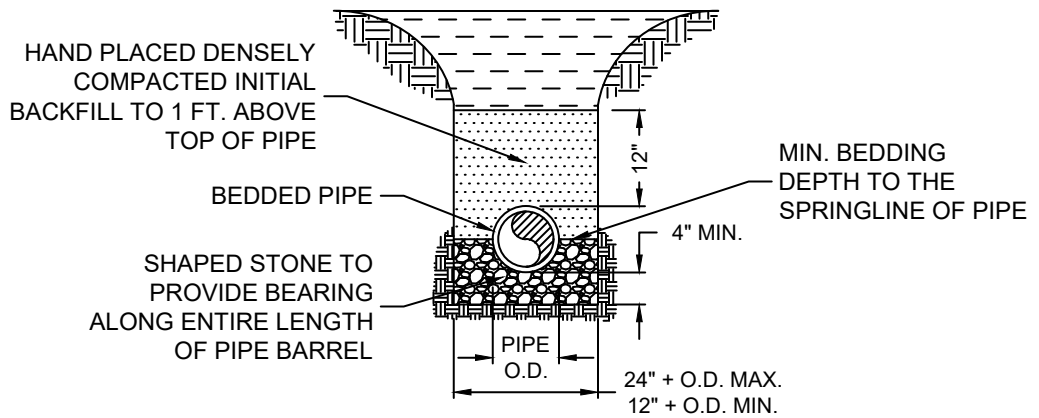
SANITARY SEWER UNDER STORM SEWER / GAS MAIN

NOTE:
PROPOSED SANITARY SEWER MAINS SHALL BE DUCTILE IRON PIPE AT ALL AREAS WHERE MIN. CLEARANCES CANNOT BE MAINTAINED. INSTALL AT LEAST ONE JOINT CENTERED OVER CROSSING.

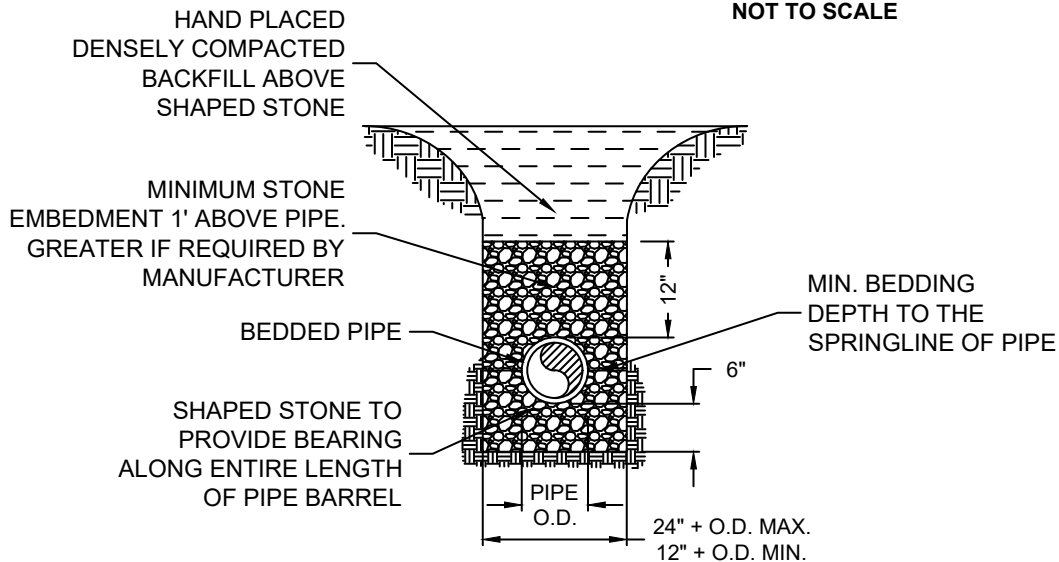
REVISED		MOORE COUNTY PUBLIC WORKS ENGINEERING DIVISION	SANITARY SEWER CROSSINGS	STD NO. SS-1
DATE	DESCRIPTION			



SANITARY SEWER DIP
0' - 3' DEPTH
NOT TO SCALE

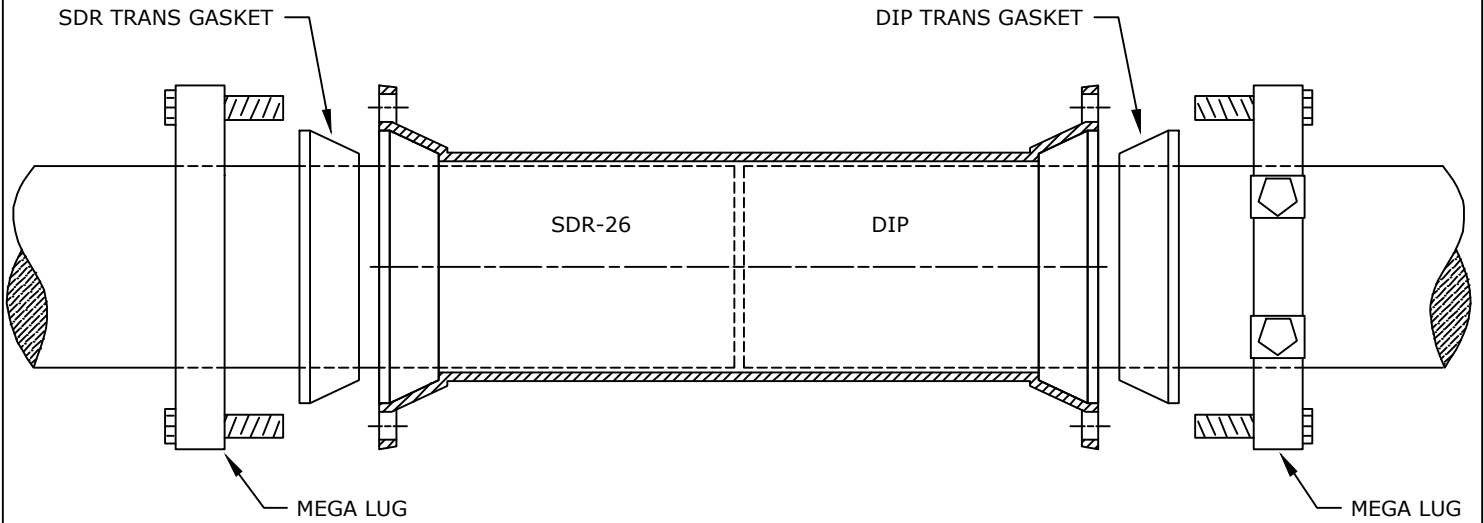


SANITARY SEWER
PVC/DIP 3' - 12' DEPTH
NOT TO SCALE



SANITARY SEWER
DIP >12' DEPTH
NOT TO SCALE

REVISED		MOORE COUNTY PUBLIC WORKS ENGINEERING DIVISION	PIPE INSTALLATION PVC & DIP	STD NO. SS-2
DATE	DESCRIPTION			

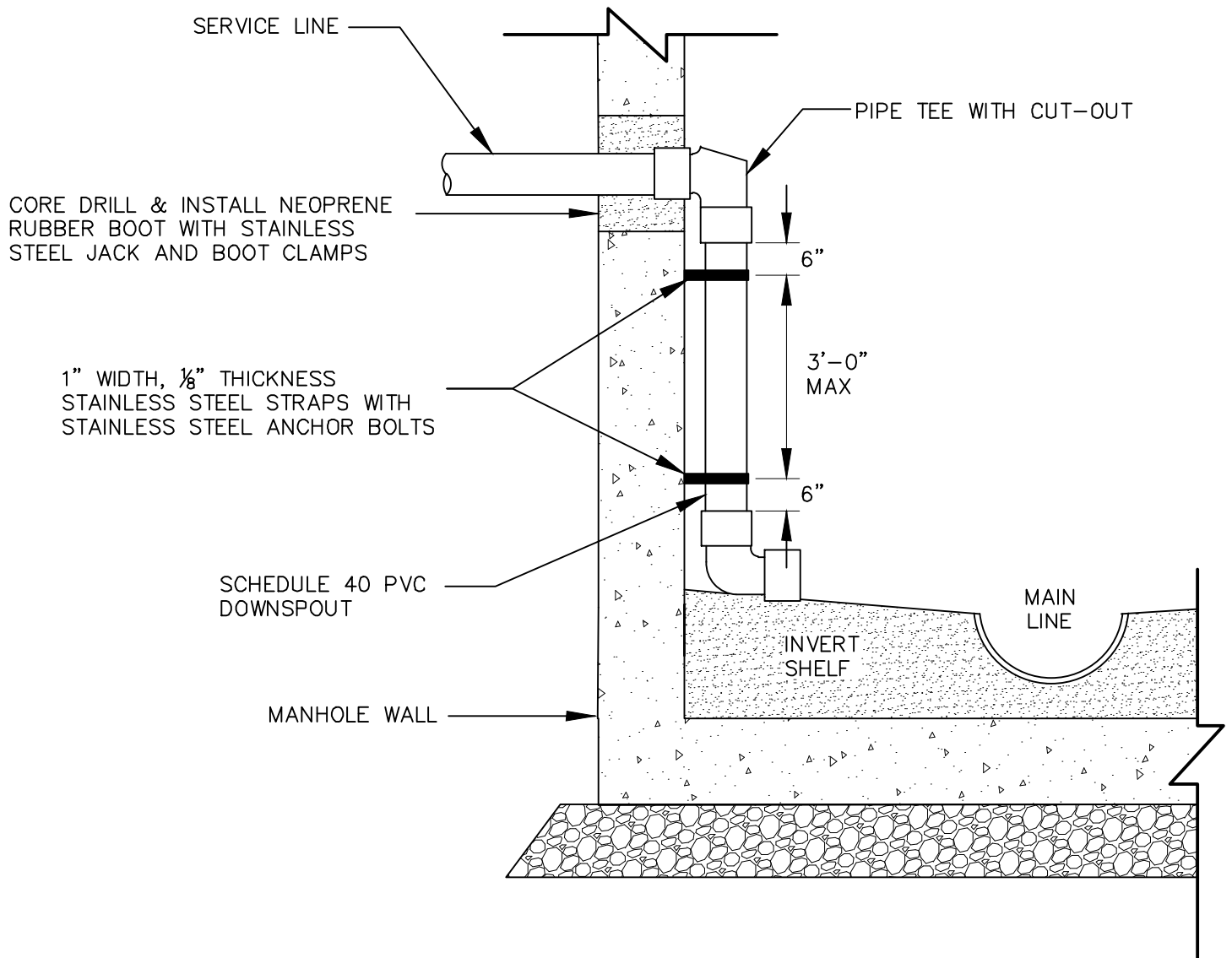


NOTES:

WHEN TRANSITIONING BETWEEN DIP & SDR-26,
THE FOLLOWING STEPS SHALL BE TAKEN:

1. CUT THE BELL END OF THE PIPE OFF.
2. INSERT A MJ LONG SLEEVE.
3. ON THE DIP JOINT, INSERT A DIP TRANS GASKET WITH MEGA LUG.
4. ON THE SDR-26 JOINT, INSERT A SDR TRANS GASKET WITH MEGA LUG.

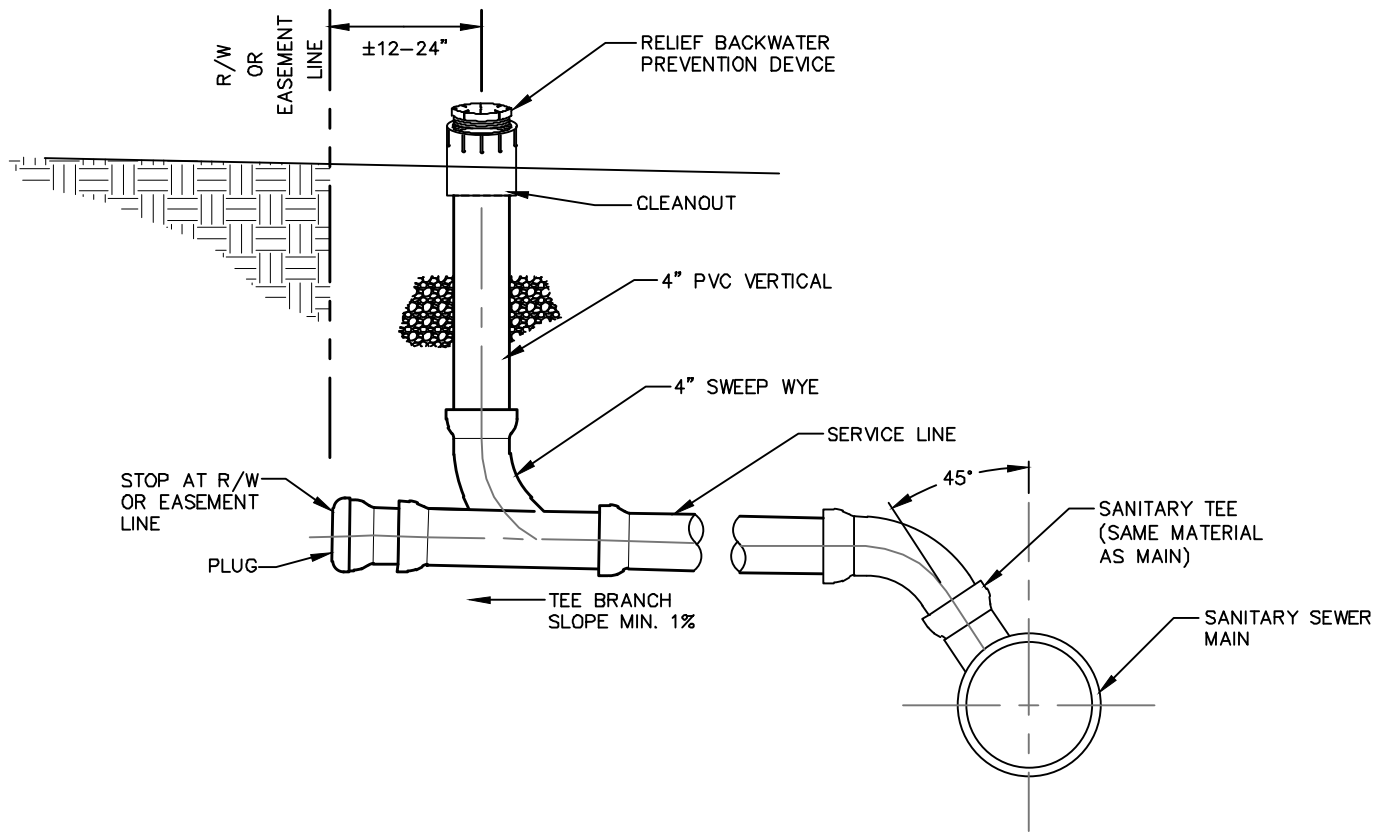
REVISED		MOORE COUNTY PUBLIC WORKS ENGINEERING DIVISION	SDR TO DIP TRANSITION	STD NO. SS-3
DATE	DESCRIPTION			



NOTES:

1. PIPING CONFIGURATION TO BE USED ON ALL DROPS OVER 30".
2. SERVICE LINE MAY NOT ENTER MANHOLE THROUGH CONE SECTION OR ITS JOINT.
3. THIS DETAIL SHALL NOT BE USED FOR FORCE MAINS.

REVISED		MOORE COUNTY PUBLIC WORKS ENGINEERING DIVISION	MANHOLE INSIDE DROP SERVICE CONNECTION	STD NO. SS-4
DATE	DESCRIPTION			

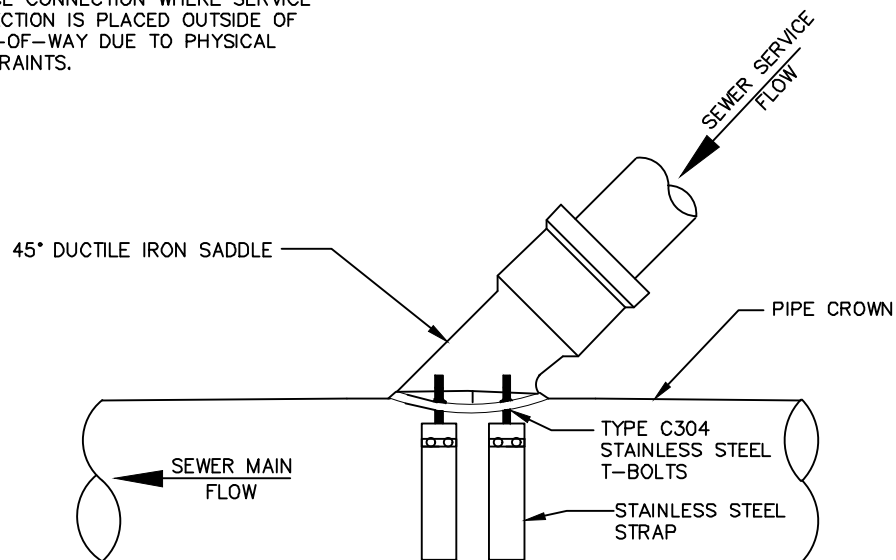


TYPICAL SEWER SERVICE CONNECTION

(NTS)

NOTES:

AN EASEMENT SHALL BE PROVIDED FOR SERVICE CONNECTION WHERE SERVICE CONNECTION IS PLACED OUTSIDE OF RIGHT-OF-WAY DUE TO PHYSICAL CONSTRAINTS.

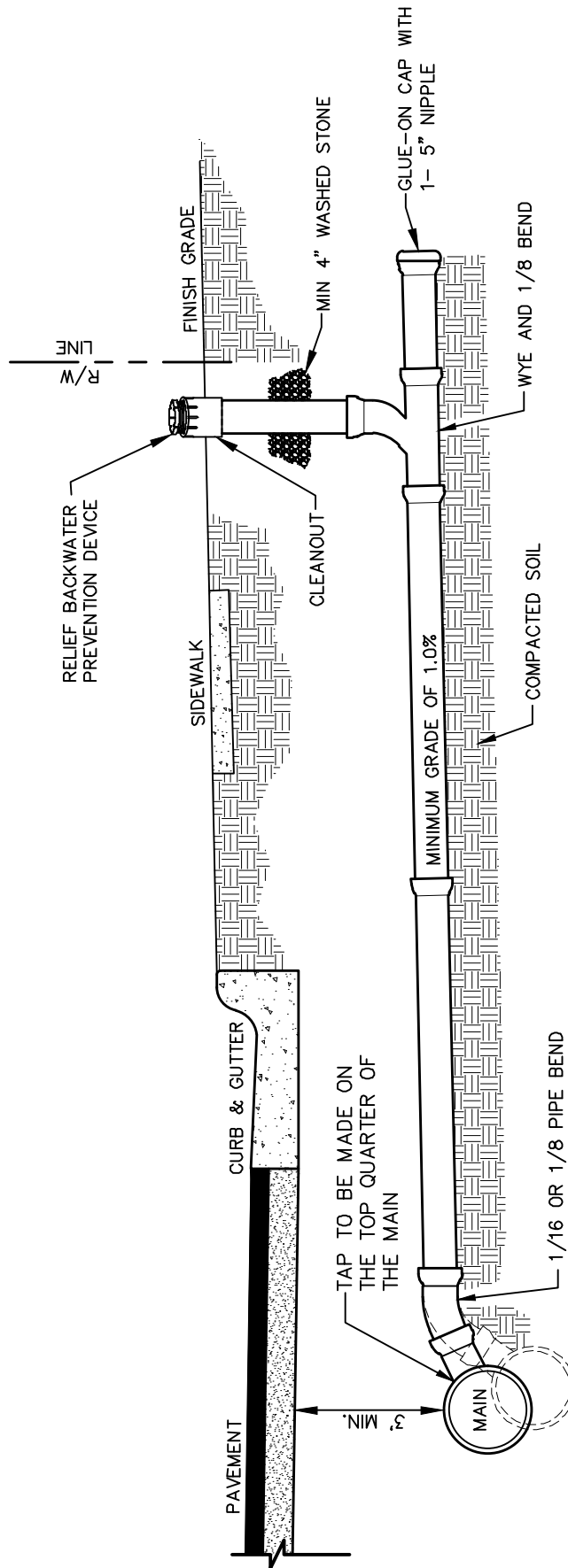


(NTS)

NOTES:

- 1) VITRIFIED CLAY PIPE SHALL BE BLOCKED AND SEALED WITH CONCRETE.
- 2) IN-LINE WYE FITTING TO BE PROVIDED WITH NEW CONSTRUCTION.

REVISED		MOORE COUNTY PUBLIC WORKS ENGINEERING DIVISION	SERVICE CONNECTION AND CLEANOUT	STD NO. SS-5
DATE	DESCRIPTION			



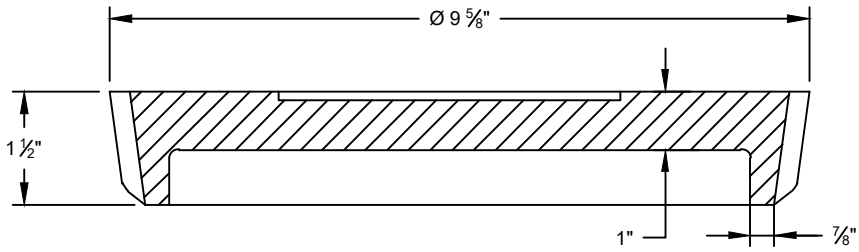
- NOTES:
- 1) CLEANOUT SHALL BE PLACED AT RIGHT-OF-WAY LINE.
 - 2) DO NOT INSTALL CLEANOUT INSIDE A FENCE.
 - 3) IN SHOULDER SECTIONS, THE SERVICE SHALL BE A MINIMUM OF 30" BELOW THE FLOW LINE OF THE DITCH.

REVISED	
DATE	DESCRIPTION

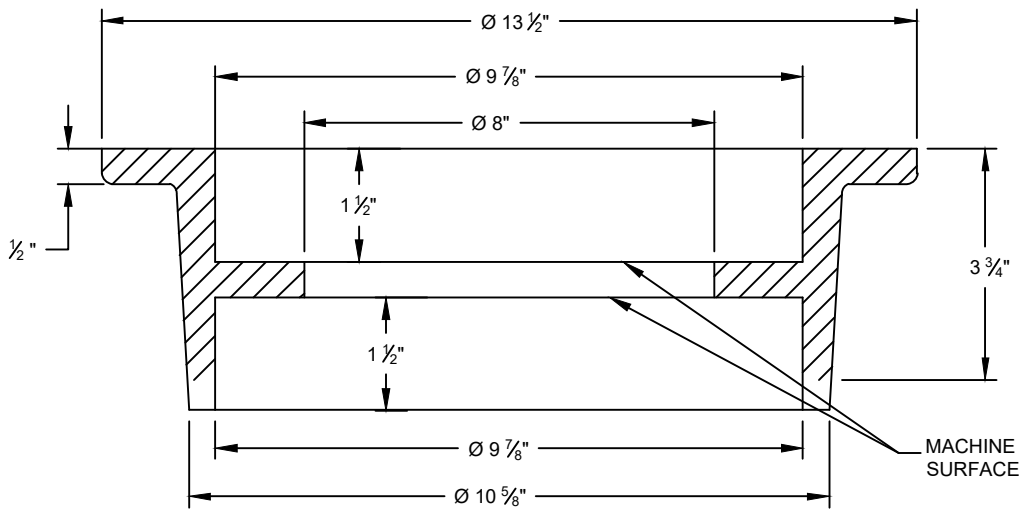
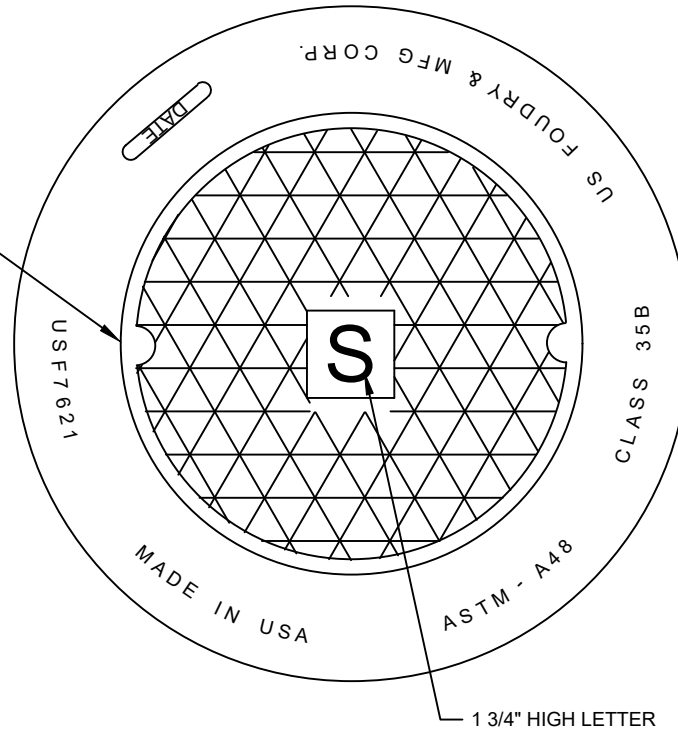
MOORE COUNTY PUBLIC WORKS
ENGINEERING DIVISION

SANITARY SEWER TAP

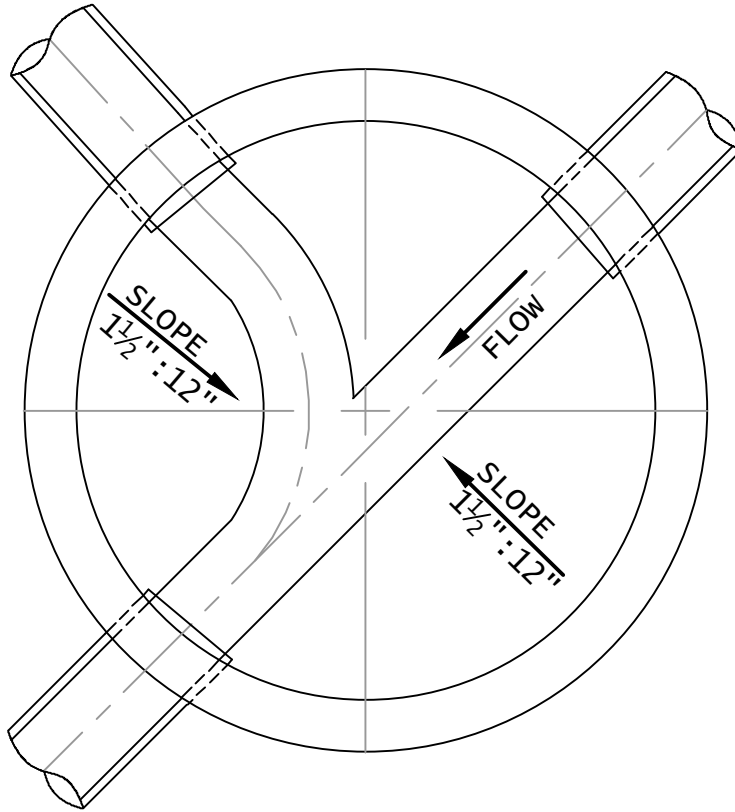
STD NO.
SS-6



(2) PENETRATING
PACKHOLES



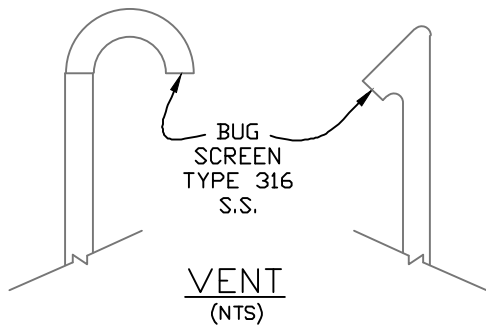
REVISED		MOORE COUNTY PUBLIC WORKS ENGINEERING DIVISION	SEWER CLEANOUT FRAME & COVER	STD NO. SS-7
DATE	DESCRIPTION			



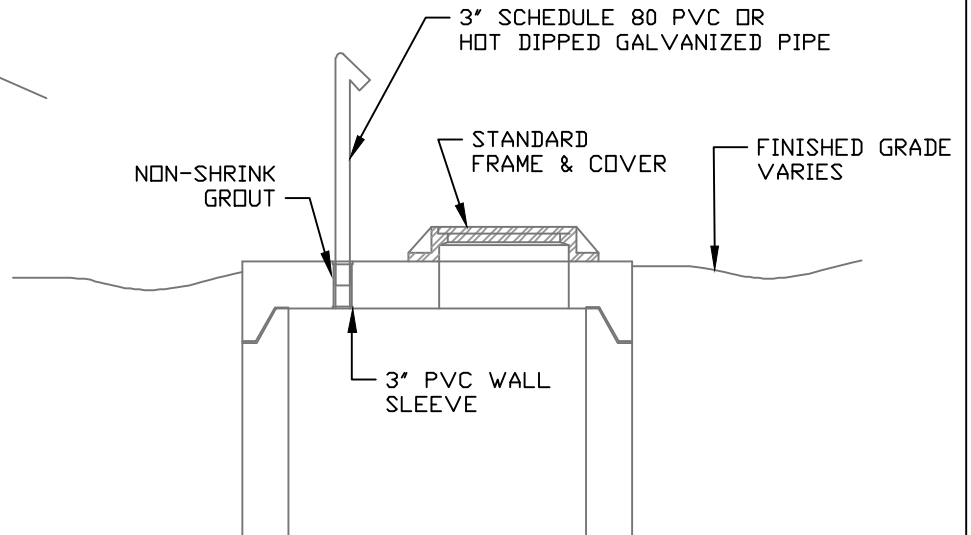
TYPICAL MANHOLE INVERT

(NTS)

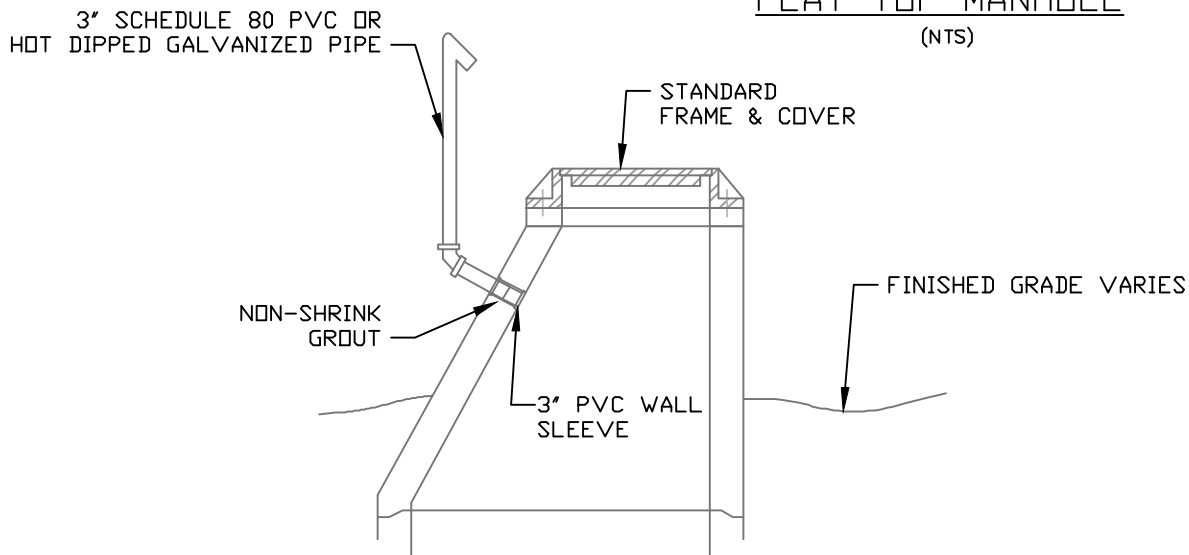
REVISED		MOORE COUNTY PUBLIC WORKS ENGINEERING DIVISION	MANHOLE INVERT	STD NO. SS-8
DATE	DESCRIPTION			



NOTE:
VENT TOP TO BE 2'
ABOVE 100 YEAR FLOOD
ELEV. OR 5' ABOVE
MANHOLE, WHICHEVER
IS GREATER.

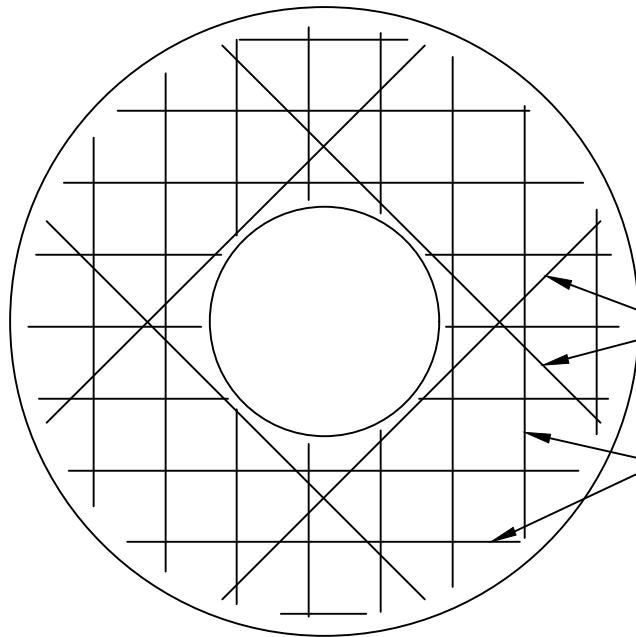


FLAT TOP MANHOLE
(NTS)



CONE TOP MANHOLE
(NTS)

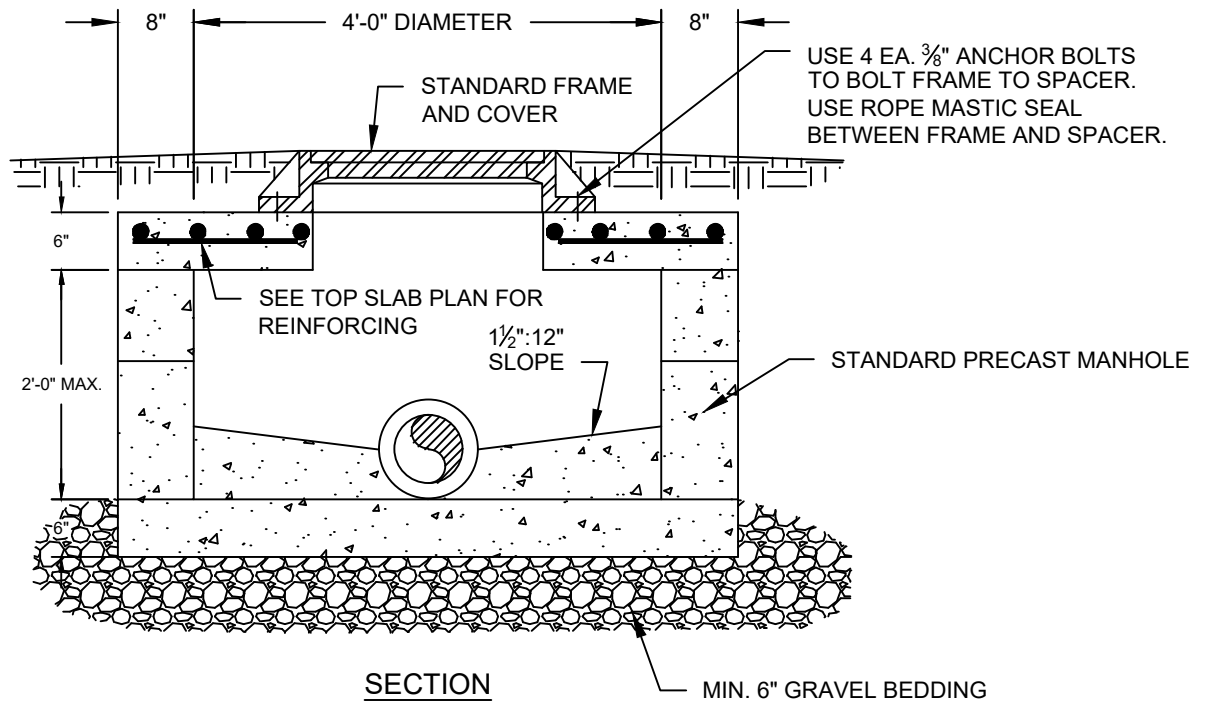
REVISED		MOORE COUNTY PUBLIC WORKS ENGINEERING DIVISION	VENTED MANHOLE	STD NO. SS-9
DATE	DESCRIPTION			



4 EA. #4 BARS
STAGGER @ 16" O.C.

#4 @ 6" O.C. EA. WAY
(TOP & BOTTOM FOR
TRAFFIC LOAD CONDITIONS)

PLAN - TOP SLAB



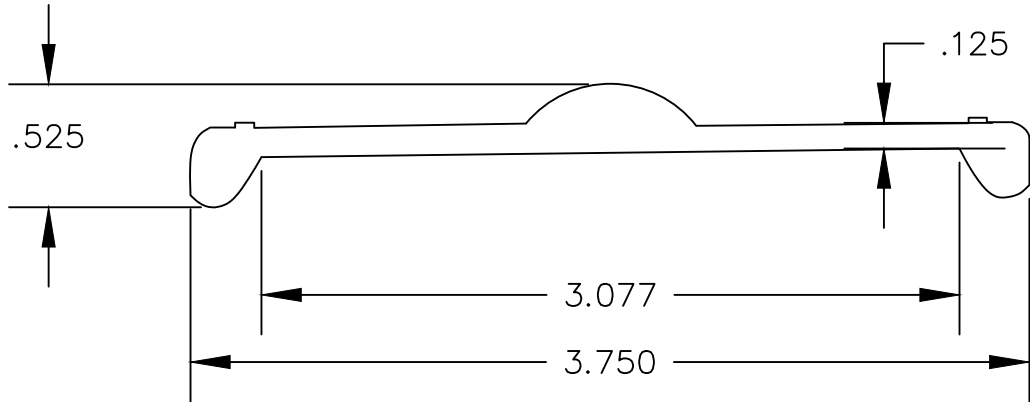
USE 4 EA. $\frac{3}{8}$ " ANCHOR BOLTS
TO BOLT FRAME TO SPACER.
USE ROPE MASTIC SEAL
BETWEEN FRAME AND SPACER.

STANDARD PRECAST MANHOLE

SECTION

MIN. 6" GRAVEL BEDDING

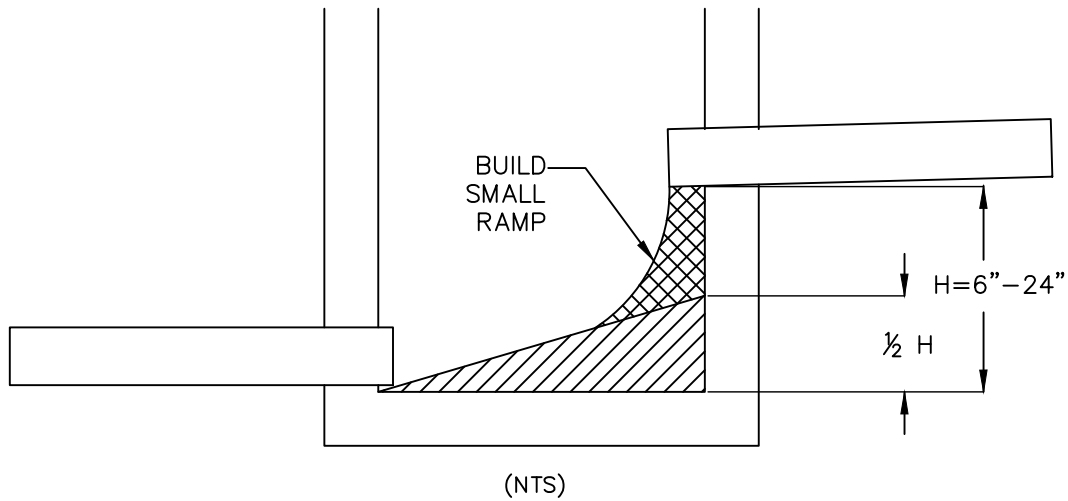
REVISED		MOORE COUNTY PUBLIC WORKS ENGINEERING DIVISION	SHALLOW MANHOLE	STD NO. SS-11
DATE	DESCRIPTION			



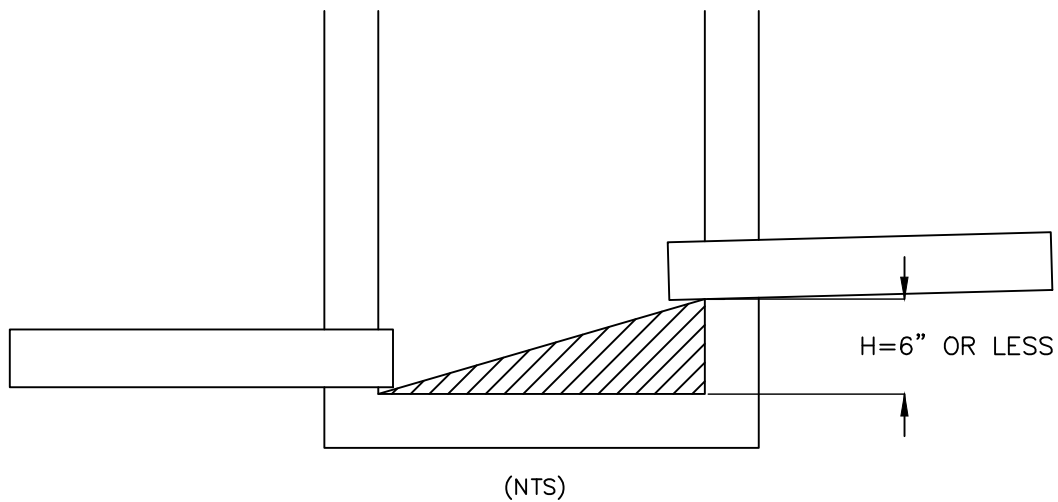
- Vinyl: White (Flooded Green)
- Size: 2-7/8" x 15"
- Colors: "Warning" is green and set against a white box. All other text and graphics (except "811" logo) are set against a green background.
- Color 811 Logo: 100% PMS black background/ outline. "Know what's below. Call before you dig" is 100% PMS black.
- Shovel: 45% PMS black
- Shovel Highlights: 20% PMS black
- 811 type: Pantone 390C
- Top Arcs: Pantone 370C
- Bottom Arcs: 7505C

REVISED		MOORE COUNTY PUBLIC WORKS ENGINEERING DIVISION	MANHOLE WARNING POST	STD NO. SS-12
DATE	DESCRIPTION			

1: IF "H" IS BETWEEN 6"—24"

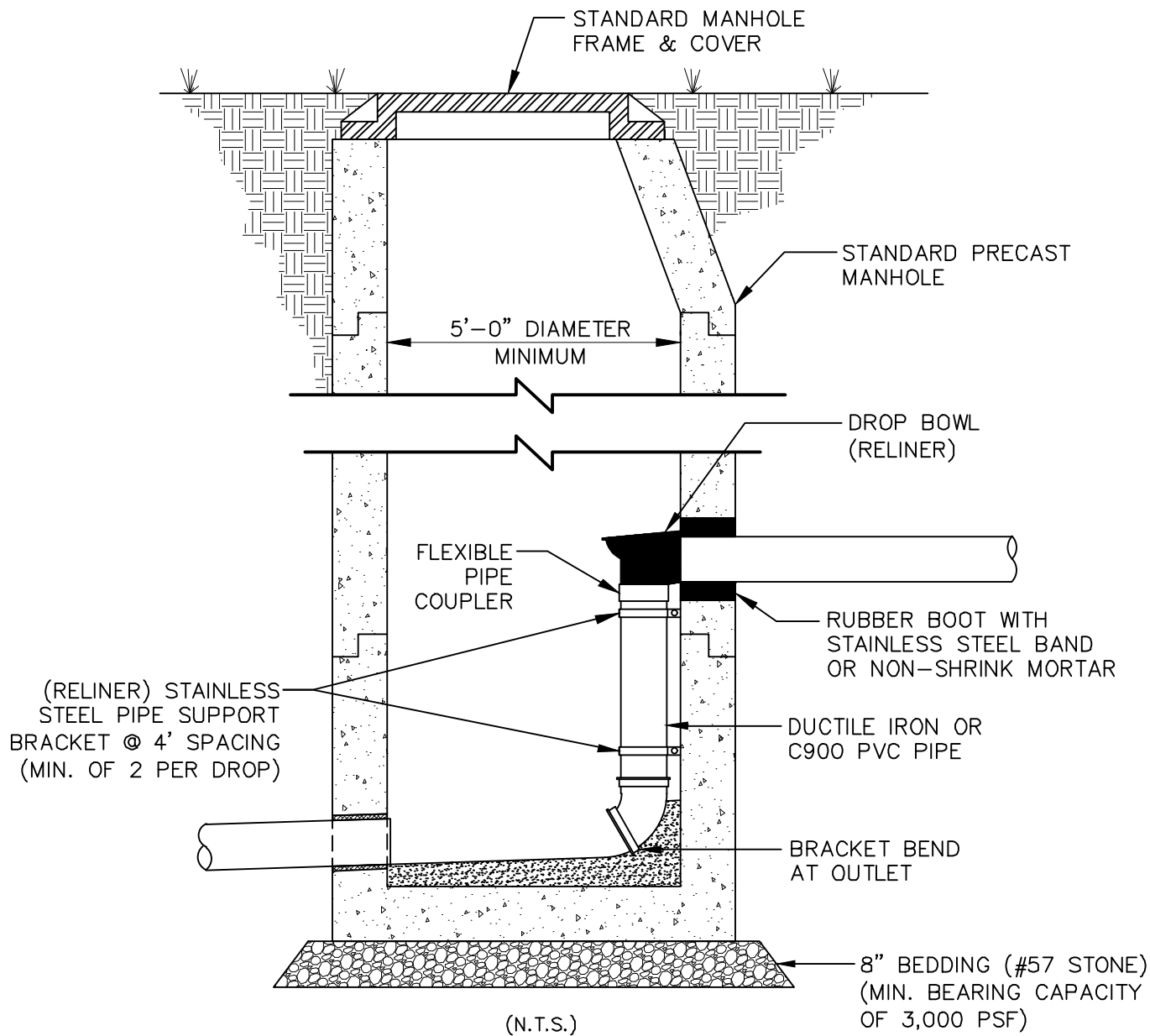


2: IF "H" IS 6" OR LESS



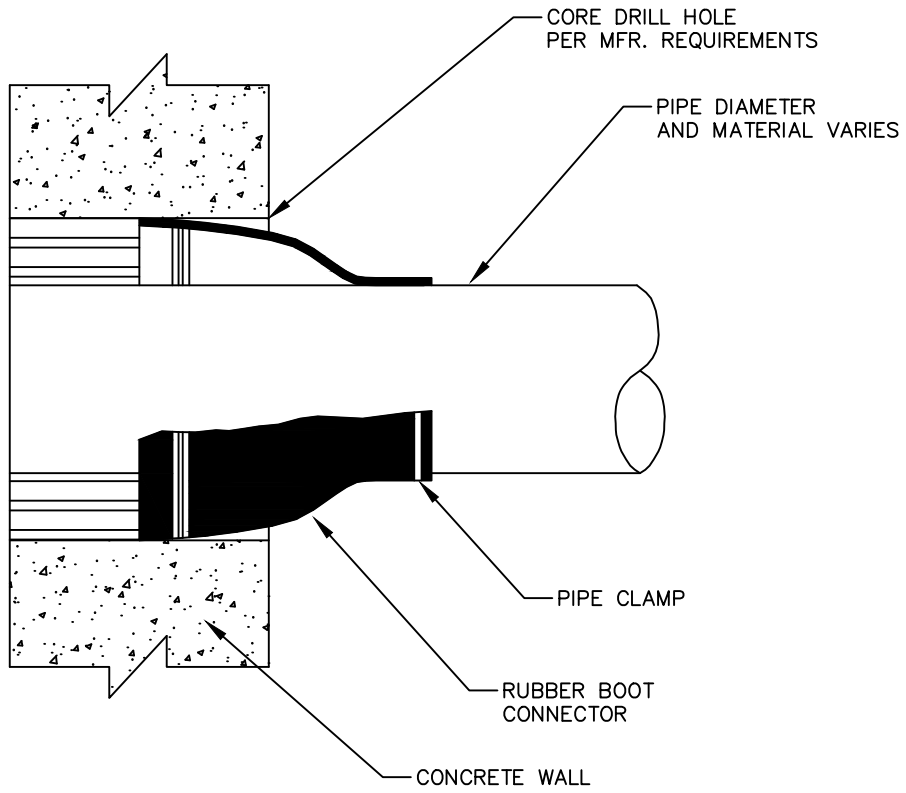
H = ELEVATION DIFFERENCE BETWEEN INVERT OF EFFLUENT PIPE AND INVERT OF INFLUENT PIPE.

REVISED		MOORE COUNTY PUBLIC WORKS ENGINEERING DIVISION	MANHOLE CHANNEL SLIDE	STD NO. SS-13
DATE	DESCRIPTION			



NOTE:
ALL DUCTILE IRON FITTINGS TO
BE #401 COATED

REVISED		MOORE COUNTY PUBLIC WORKS ENGINEERING DIVISION	MAIN LINE MANHOLE INSIDE DROP	STD NO. SS-14
DATE	DESCRIPTION			
12-16-19	DROP BOWL			

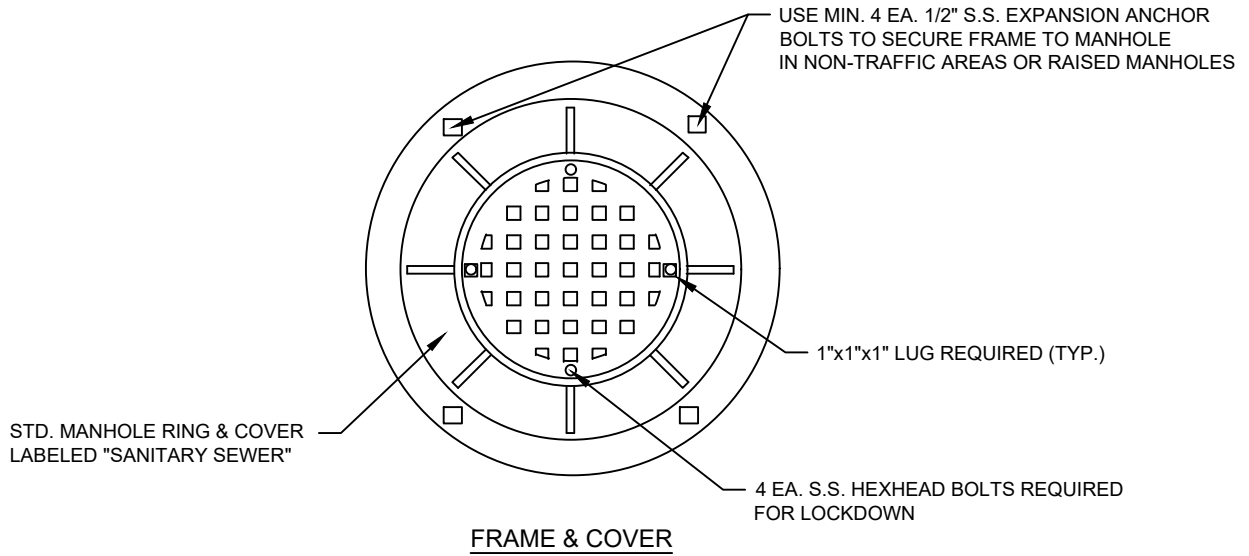


REVISED	
DATE	DESCRIPTION

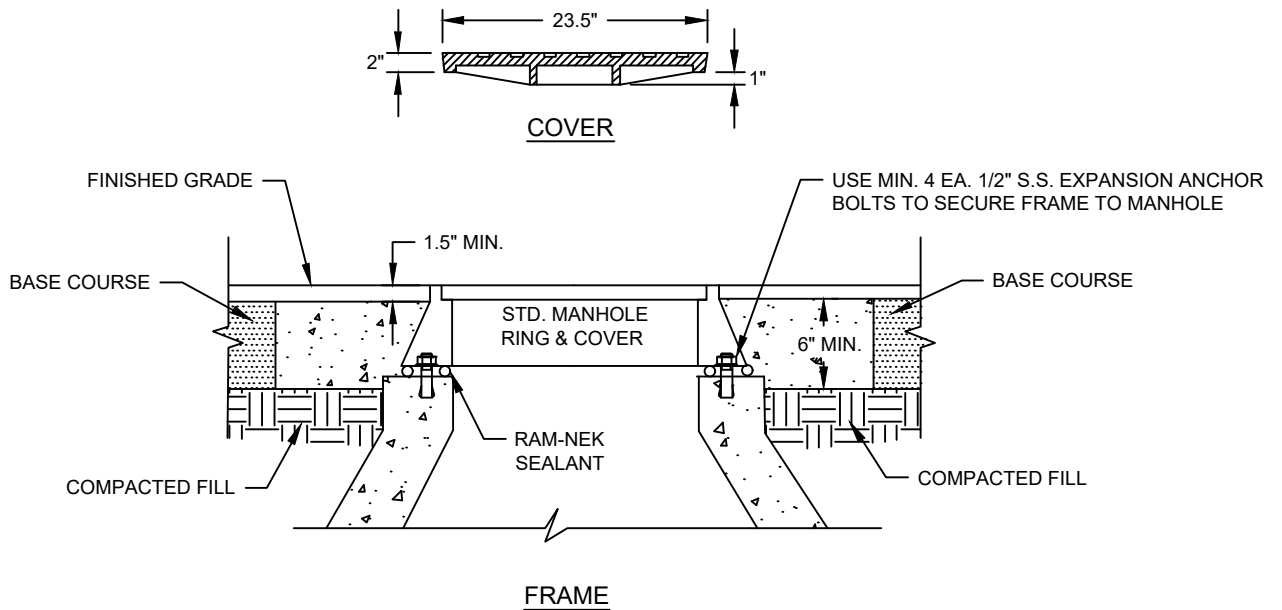
MOORE COUNTY PUBLIC WORKS
ENGINEERING DIVISION

RUBBER BOOT

STD NO.
SS-15



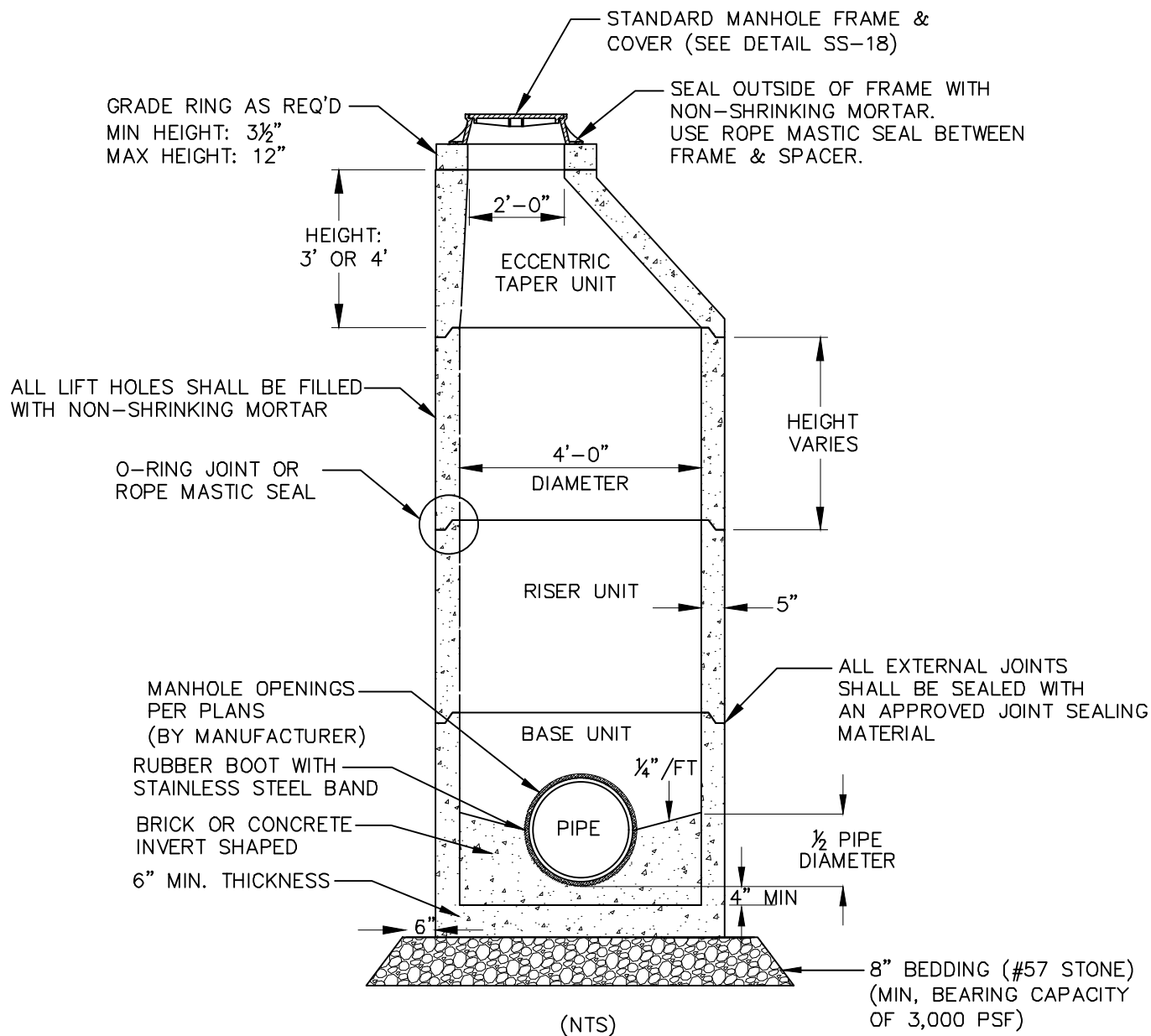
NOTE: CONCRETE ENCASEMENT SHALL ONLY BE USED IN AREAS WHERE COVER IS TO BE FLUSH WITH PAVEMENT OR CONCRETE. CONCRETE ENCASEMENT SHALL NOT BE USED IN NON-TRAFFIC AREAS AND ABOVE GRADE INSTALLATIONS.



LOCKABLE MANHOLE FRAME & COVER

NOT TO SCALE

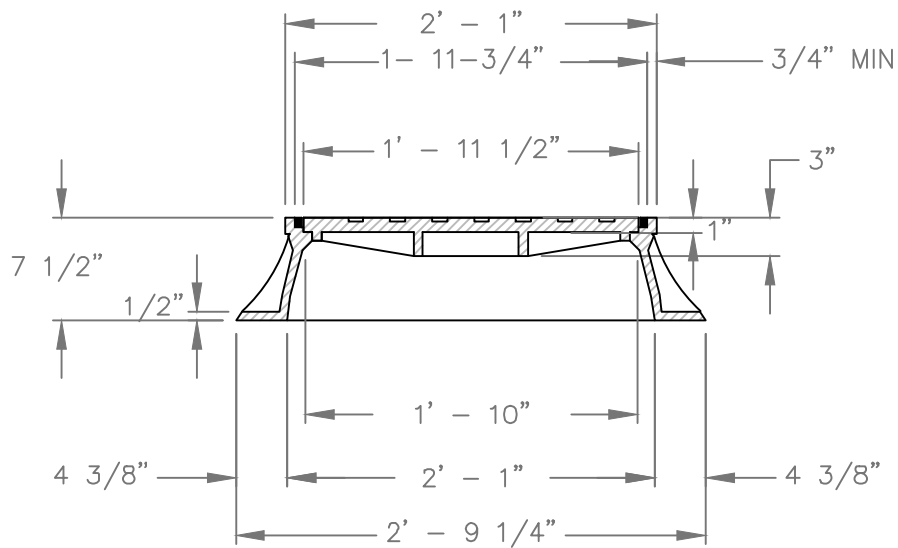
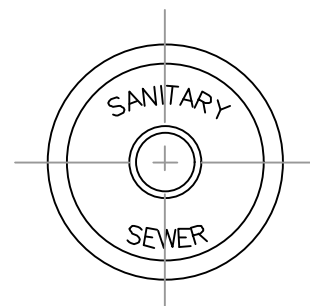
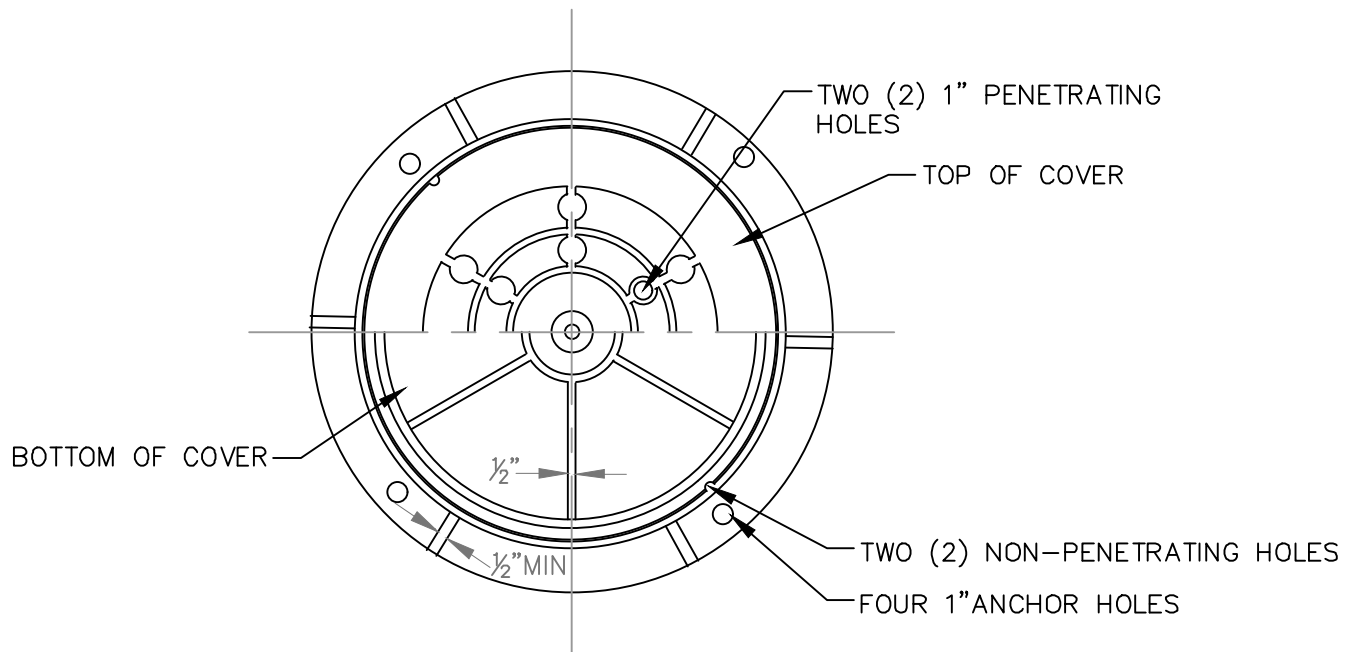
REVISED		MOORE COUNTY PUBLIC WORKS ENGINEERING DIVISION	LOCKABLE MANHOLE FRAME & COVER	STD NO. SS-16
DATE	DESCRIPTION			



NOTES:

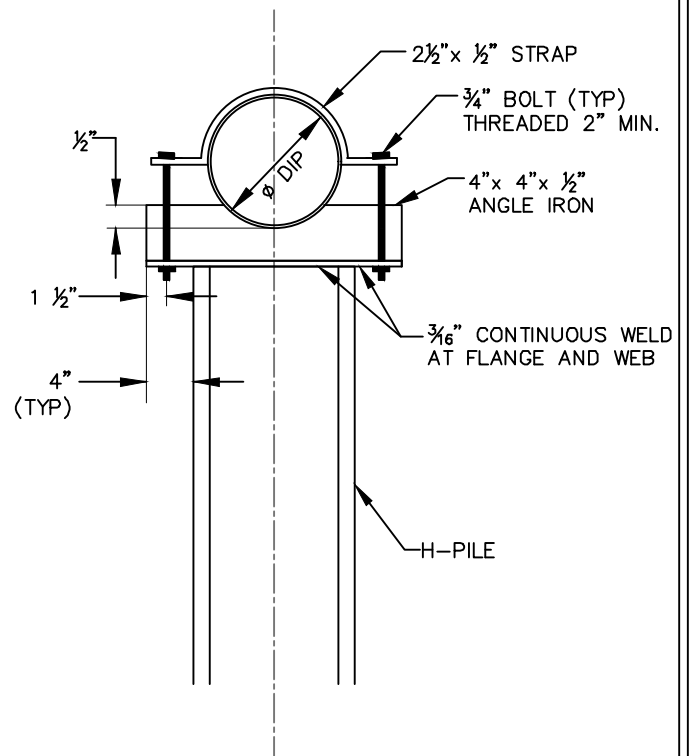
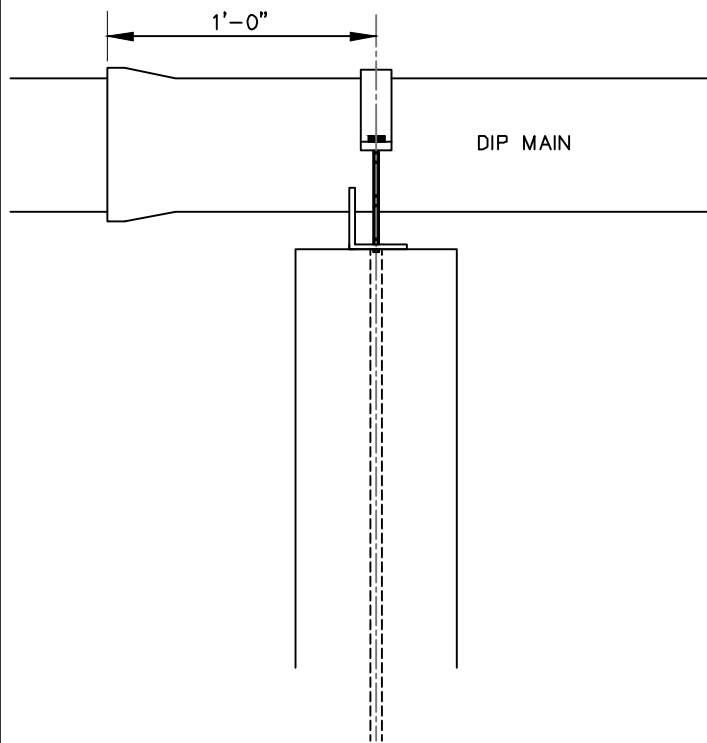
1. 4,000 PSI CONCRETE MIN. A.S.: 0.17 SQ.IN/FT (REINF. NOT SHOWN)
2. FOR TEMPORARY DEAD-END MANHOLES, THE INVERT THROUGH CONSTRUCTION SHALL BE EXTENDED THROUGH THE MANHOLE. FOR PERMANENT DEAD-END MANHOLES, THE INVERT SHALL BE BOWL SHAPE.
3. EXTENDED BASE REQUIRED FOR ALL MANHOLES OVER 10' IN DEPTH.
4. IN INSTALLATION AREAS WHERE GROUNDWATER IS ENCOUNTERED, UPLIFT COMPUTATIONS & BALLASTING MAY BE REQUIRED.
5. BASE AND BASE SLAB SHALL BE MONOLITHIC.
6. ALL MANHOLE CONNECTIONS SHALL BE PREFABRICATED OR CORED WITH A CONCRETE CORING MACHINE.
7. ALL MANHOLES SHALL BE VACUUM TESTED.

REVISED		MOORE COUNTY PUBLIC WORKS ENGINEERING DIVISION	4' STANDARD MANHOLE	STD NO. SS-17
DATE	DESCRIPTION			



MINIMUM AVERAGE WEIGHT	
RING	190
COVER	120
TOTAL	310

REVISED		MOORE COUNTY PUBLIC WORKS ENGINEERING DIVISION	STANDARD MANHOLE FRAME & COVER	STD NO. SS-18
DATE	DESCRIPTION			



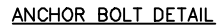
PIER DETAIL

(NTS)

PIPE DIAMETER	H-PILE
8"	HP8-36 LBS/LF
10"	HP10-42 LBS/LF
12"	HP12-53 LBS/LF

NOTE:
PILE SHALL BE DRIVEN TO REFUSAL
ALL HARDWARE TO BE STAINLESS STEEL.

REVISED		MOORE COUNTY PUBLIC WORKS ENGINEERING DIVISION	AERIAL PIPE SUPPORT H-PILE	STD NO. SS-19
DATE	DESCRIPTION			



AT THE CONTRACTORS OPTION,
IN LIEU OF FORMING THE 120" CONCRETE SADDLE,
A STAINLESS STEEL PIPE SADDLE MAY BE PROVIDED.
ALL HARDWARE TO BE STAINLESS STEEL.

FEBRUARY 2024