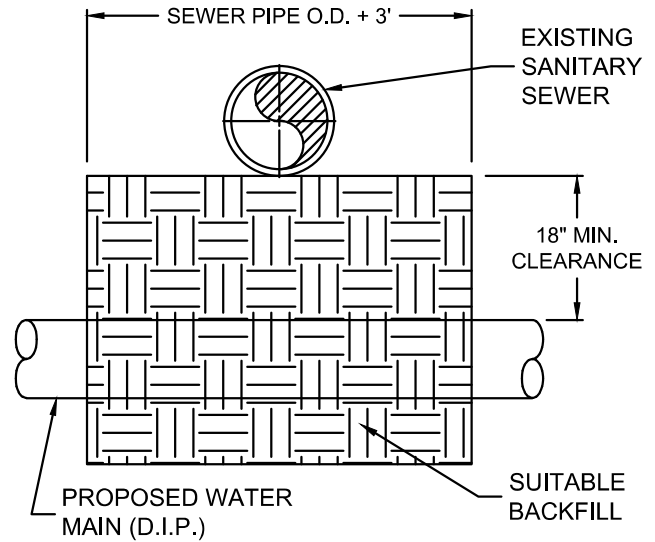
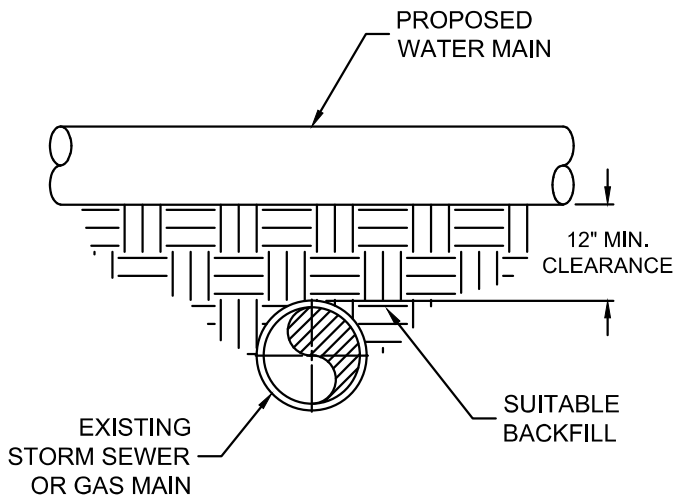


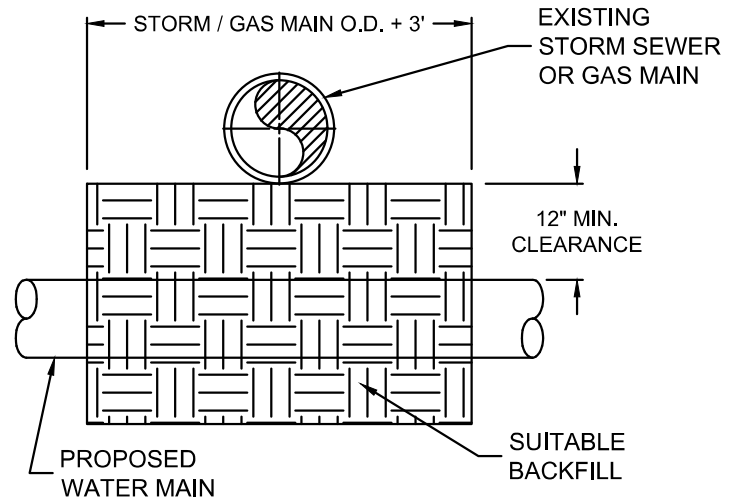
WATER MAIN OVER
SANITARY SEWER



WATER MAIN UNDER SANITARY SEWER
(APPROVAL REQ. FROM COUNTY ENGINEER)



WATER MAIN OVER
STORM SEWER / GAS MAIN

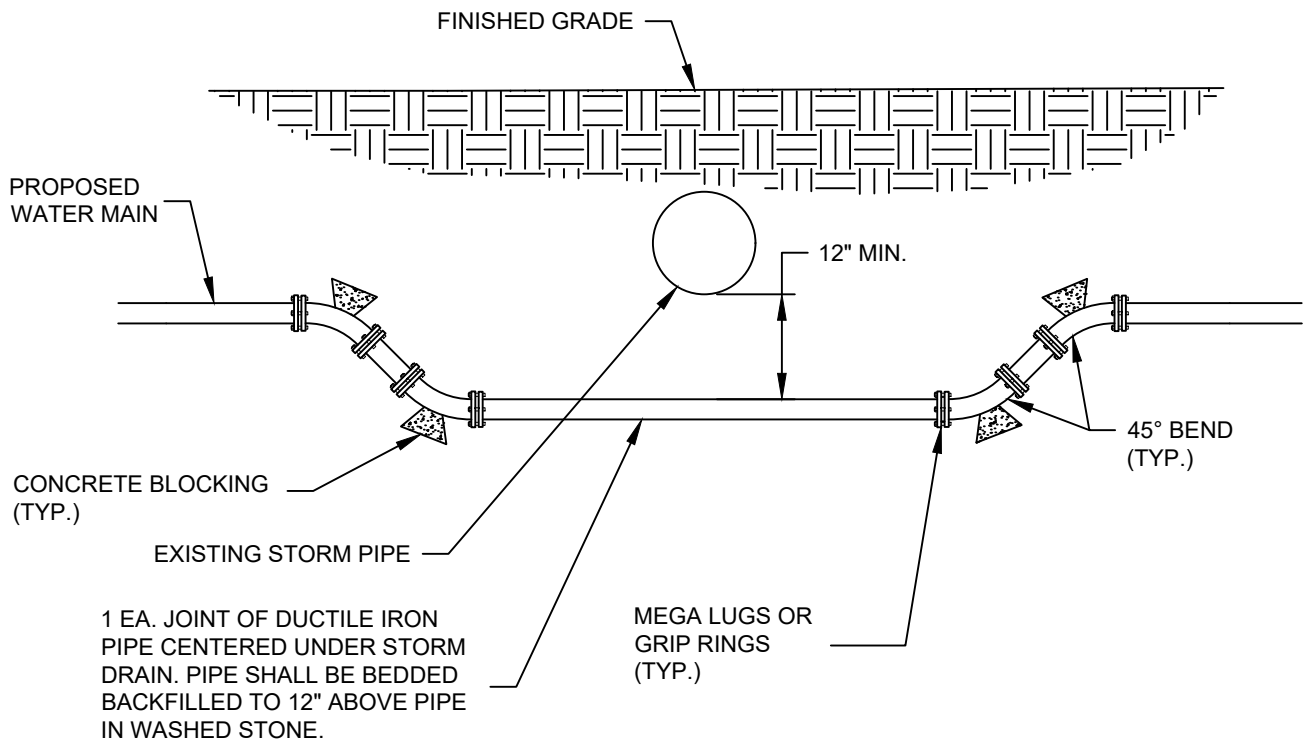


WATER MAIN UNDER STORM SEWER / GAS MAIN
(APPROVAL REQ. FROM COUNTY ENGINEER)

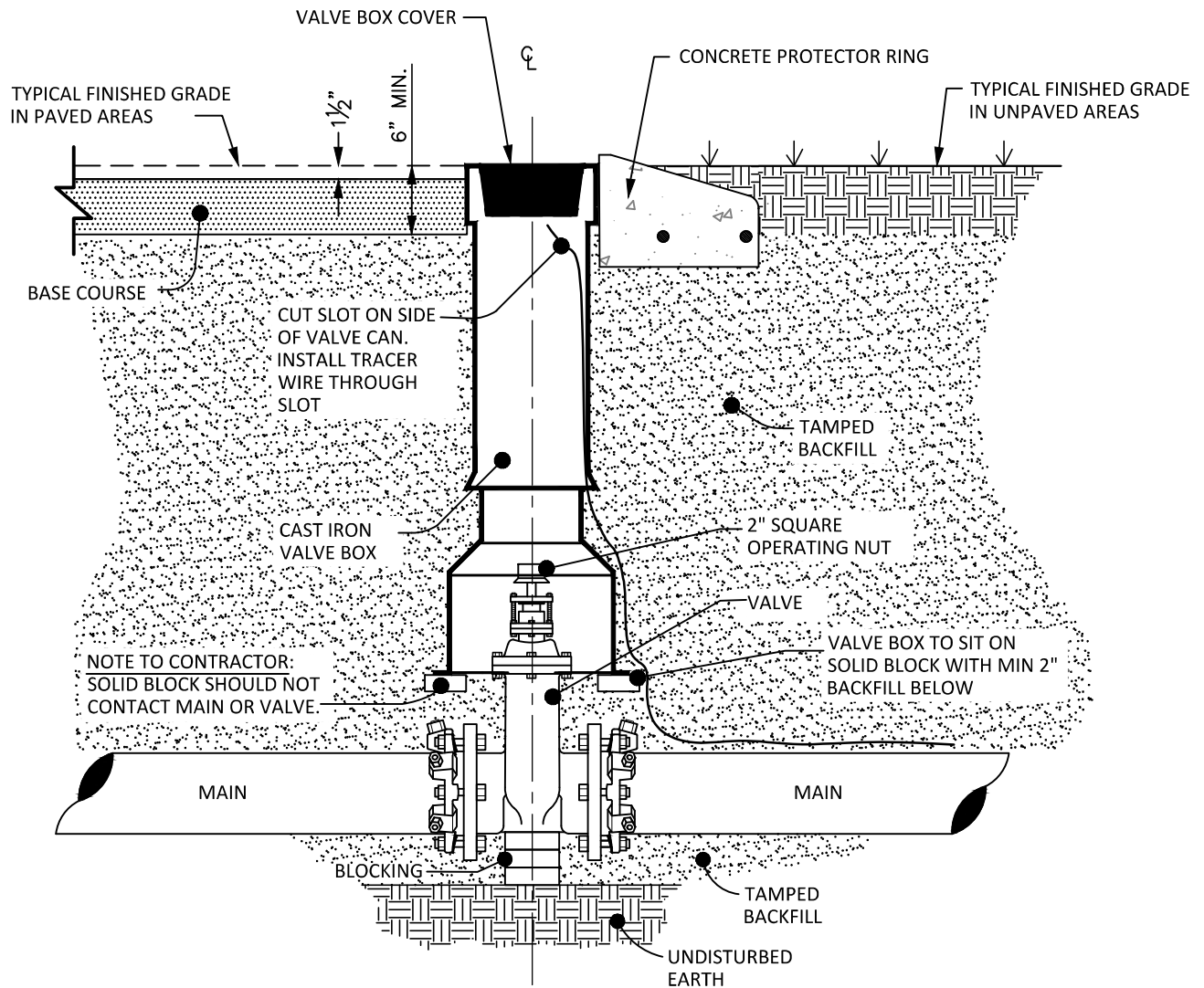
NOTE:

PROPOSED WATER MAINS SHALL BE DUCTILE IRON PIPE AT ALL AREAS WHERE MIN. CLEARANCES CANNOT BE MAINTAINED. INSTALL AT LEAST ONE JOINT CENTERED OVER CROSSING.

REVISED		MOORE COUNTY PUBLIC WORKS ENGINEERING DIVISION	WATER MAIN CROSSINGS	STD NO. PW-1
DATE	DESCRIPTION			



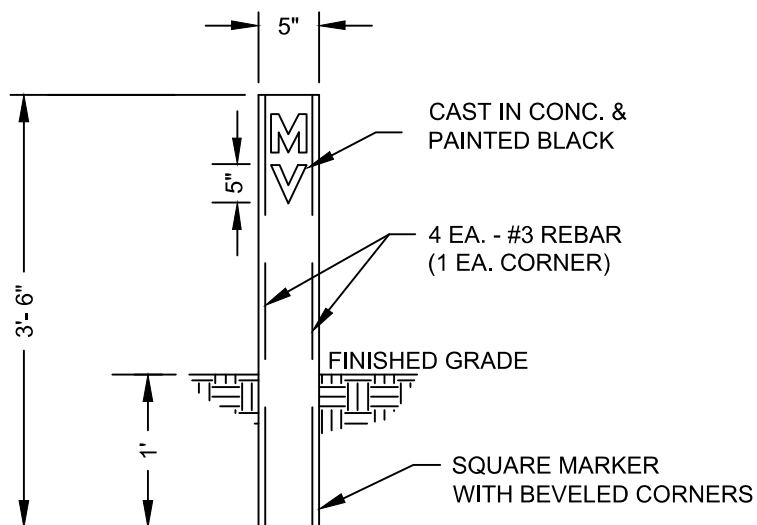
REVISED		MOORE COUNTY PUBLIC WORKS ENGINEERING DIVISION	LARGE PIPE CROSSING	STD NO. PW-2
DATE	DESCRIPTION			



NOTES:

1. ONLY MANUFACTURED VALVE BOX EXTENSIONS SHALL BE ALLOWED.
2. VALVE OPERATING NUT MUST BE EXTENDED SO THAT THE DEPTH IS NO GREATER THAN 4' (ft.) FROM THE SURFACE USING A MANUFACTURER APPROVED EXTENSION KIT.
3. PRECAST CONCRETE ENCASEMENT IS REQUIRED OUTSIDE OF PAVED AREAS.
4. CONCRETE PROTECTOR RING MAY BE USED IN LIEU OF ENCASEMENT IN UNPAVED AREAS.
5. ALL VALVES SHALL BE PLACED ON 4" THICK 8"X12" CONCRETE BLOCKS.

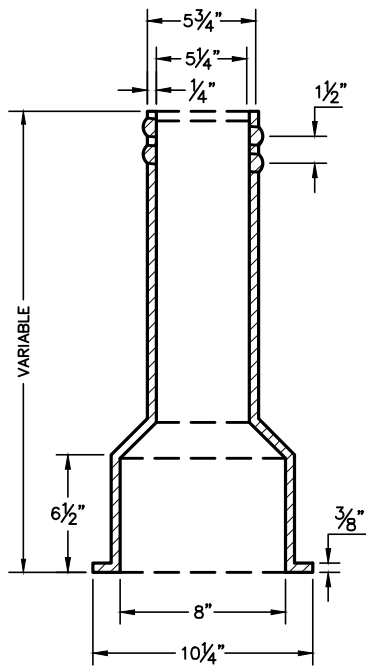
REVISED		MOORE COUNTY PUBLIC WORKS ENGINEERING DIVISION	VALVE AND VALVE BOX INSTALLATION	STD NO. PW-3
DATE	DESCRIPTION			



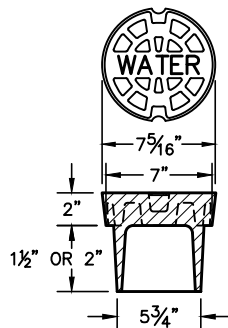
NOTES:

1. VALVE MARKERS SHALL BE PLACED AT R/W.
2. LETTERS SHALL FACE TOWARDS VALVE.
3. MARKER SHALL HAVE BRASS OR BRONZE EMBED ON TOP OR SIDE.
4. CONTRACTOR SHALL STAMP DISTANCE TO CENTER OF VALVE INTO EMBED.
5. MAIN LINE VALVES SHALL HAVE MARKER WITH "MV" CASTED IN IT.
6. BLOW-OFF ASSEMBLY SHALL INCLUDE MARKER W/ "BO" CASTED IN IT.

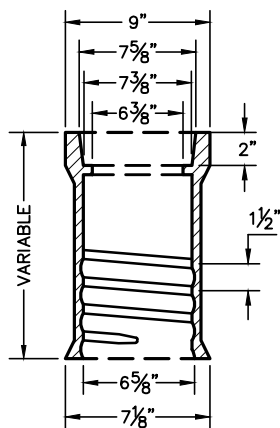
REVISED		MOORE COUNTY PUBLIC WORKS ENGINEERING DIVISION	VALVE MARKER	STD NO. PW-4
DATE	DESCRIPTION			
02/24/2022	BURIAL LENGTH			



BOTTOM SECTION

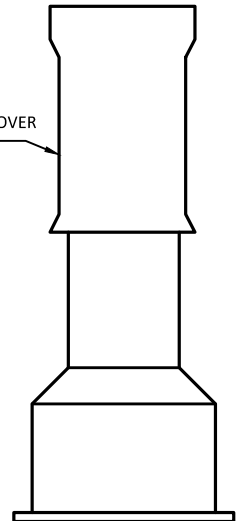


LID



TOP SECTION

BOX SHALL BE CENTERED OVER VALVE

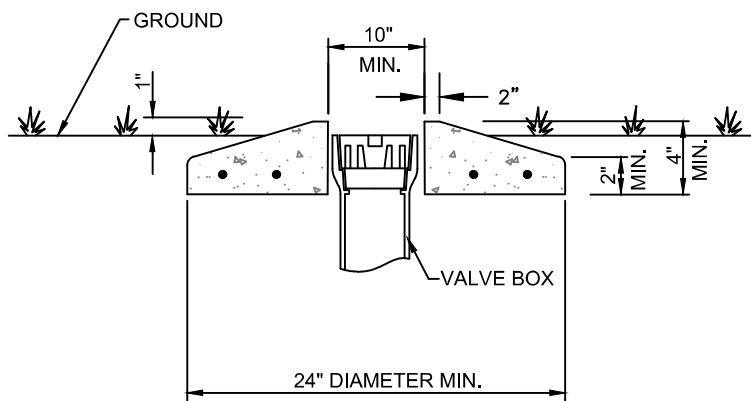
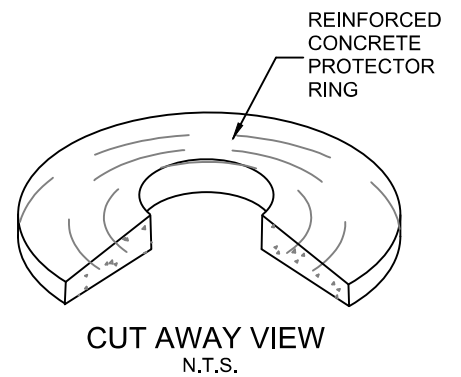
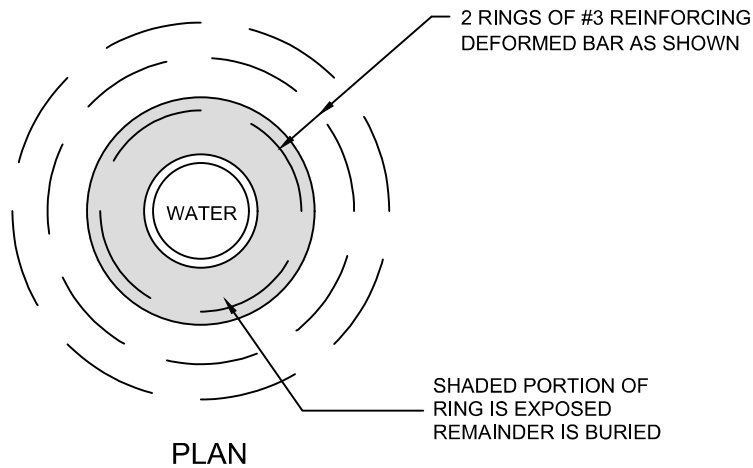


COMPLETE BOX

DIMENSIONS IN INCHES	
LENGTH	
TOP	BOTTOM
10	15
10	24
16	24
16	36
26	36
26	48
26	60

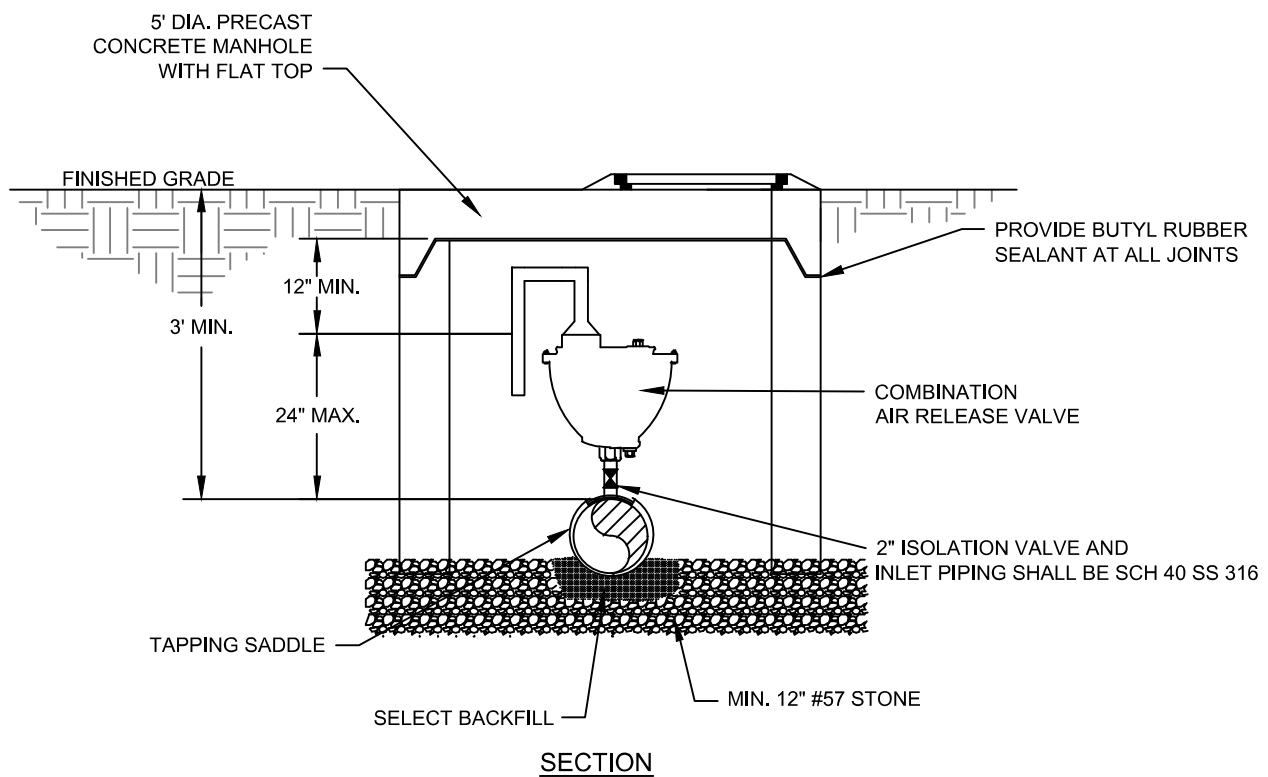
NOTE: PVC RISERS ARE NOT ALLOWED

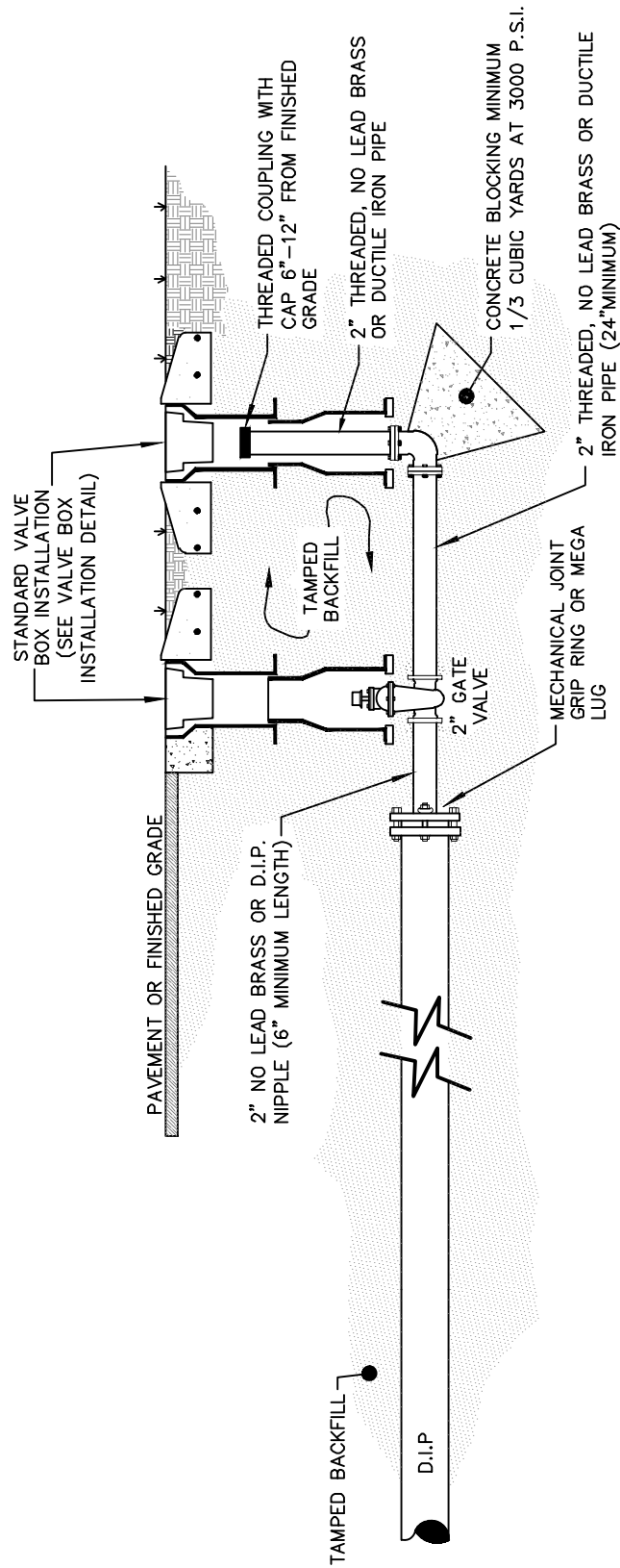
REVISED		MOORE COUNTY PUBLIC WORKS ENGINEERING DIVISION	VALVE BOX	STD NO. PW-5
DATE	DESCRIPTION			



- NOTES:
1. CONCRETE PROTECTOR RING SHALL BE 3000 P.S.I. PRECAST REINFORCED CONCRETE.

REVISED		MOORE COUNTY PUBLIC WORKS ENGINEERING DIVISION	CONCRETE PROTECTOR RING	STD NO. PW-6
DATE	DESCRIPTION			





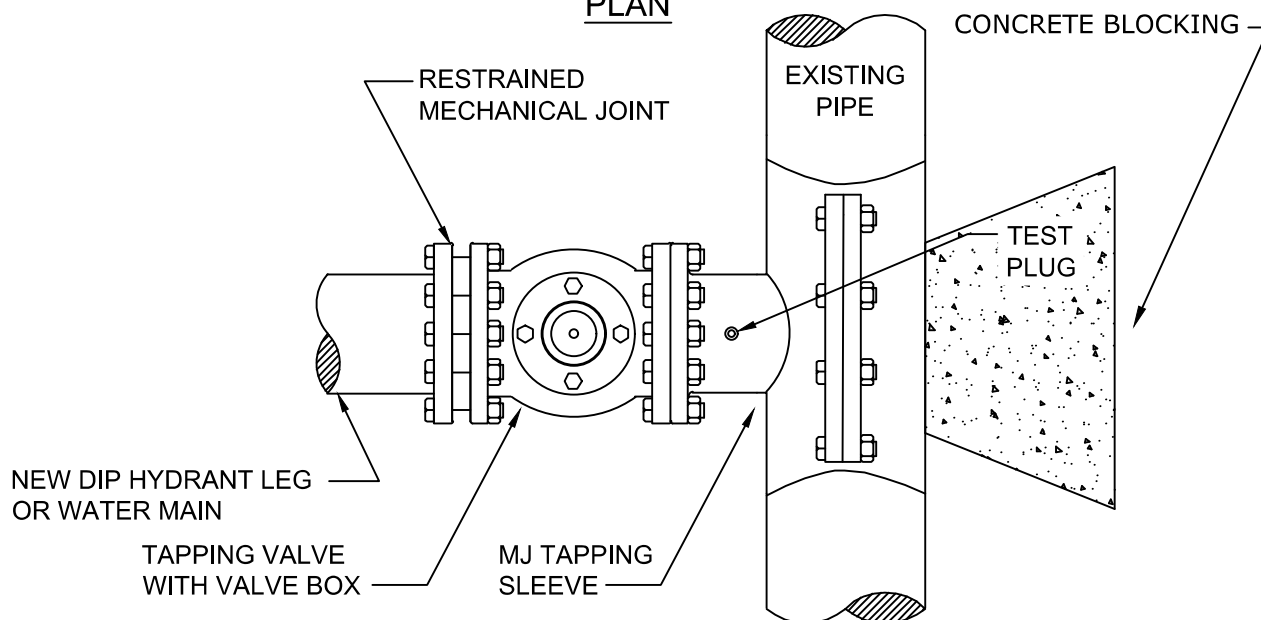
REVISED	
DATE	DESCRIPTION

MOORE COUNTY PUBLIC WORKS
ENGINEERING DIVISION

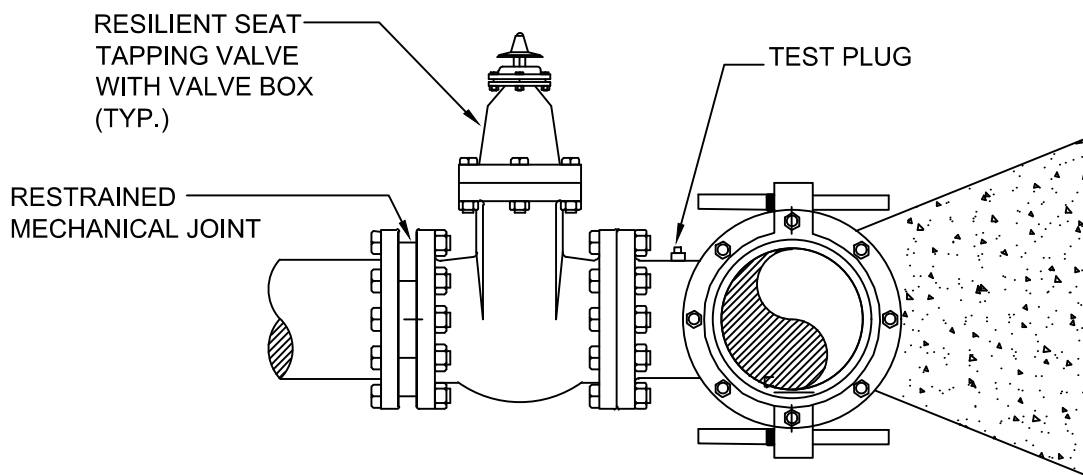
2" BLOWOFF ASSEMBLY

STD NO.
PW-8

PLAN



PROFILE

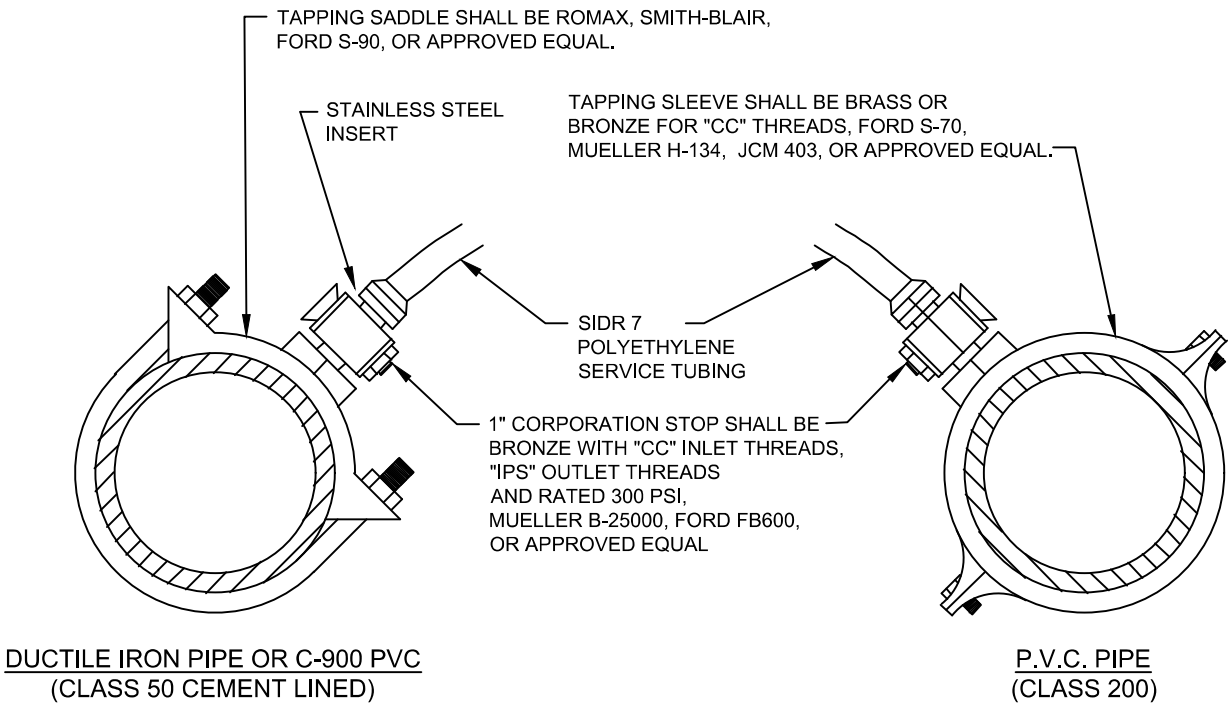


NOTES:

1. TAPPING SLEEVE SHALL BE FABRICATED OF TYPE 304 S.S. AND PROVIDE A 360° SEAL AROUND EXISTING PIPE WITH FULL CIRCUMFERENTIAL GASKET.

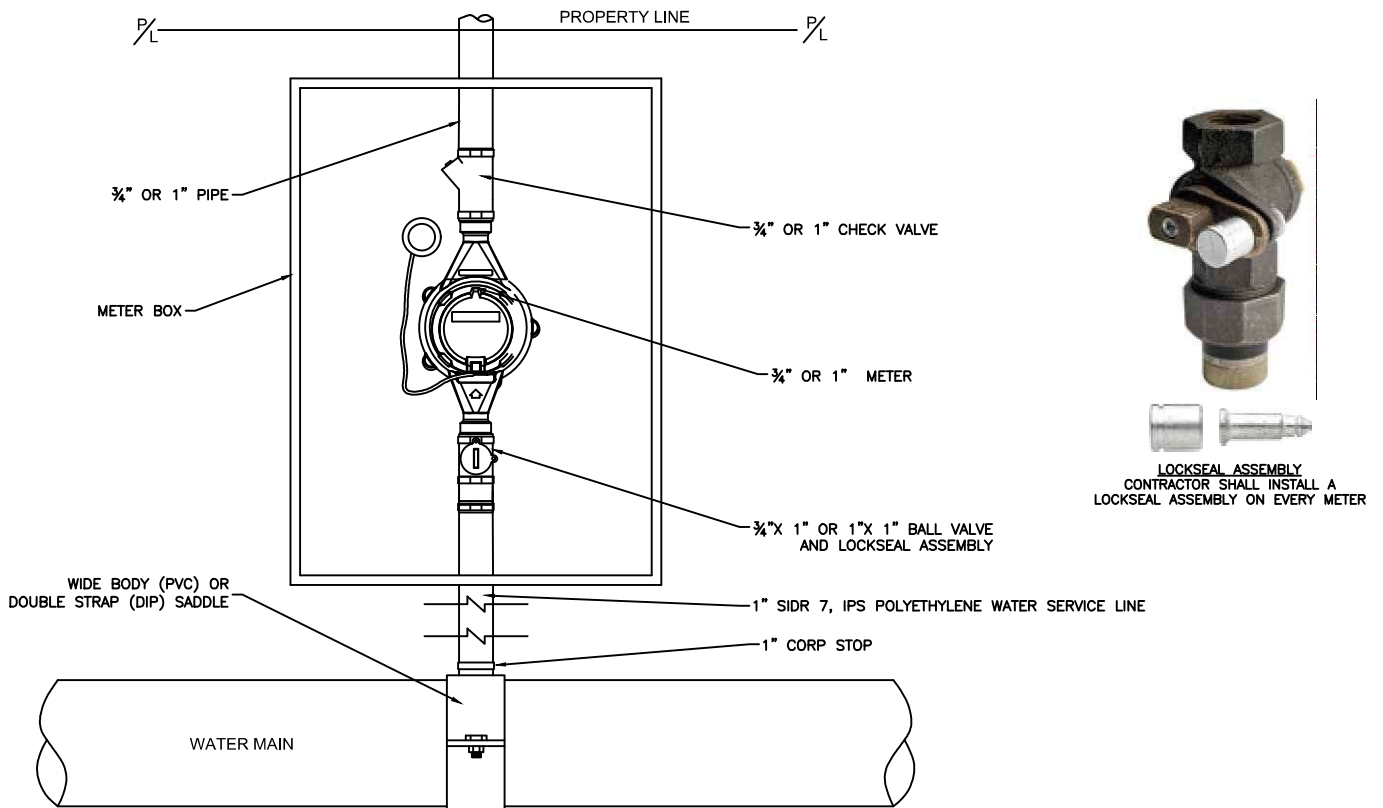
REVISED		MOORE COUNTY PUBLIC WORKS ENGINEERING DIVISION	TAPPING SLEEVE & VALVE ASSEMBLY	STD NO. PW-10
DATE	DESCRIPTION			

NOTE:
ALL TAPS 2" AND SMALLER SHALL BE MADE WITH TAPPING SADDLE. ALL TAPS LARGER THAN 2" SHALL BE MADE WITH TAPPING SLEEVE AND VALVE. NO DIRECT TAPS SHALL BE MADE.

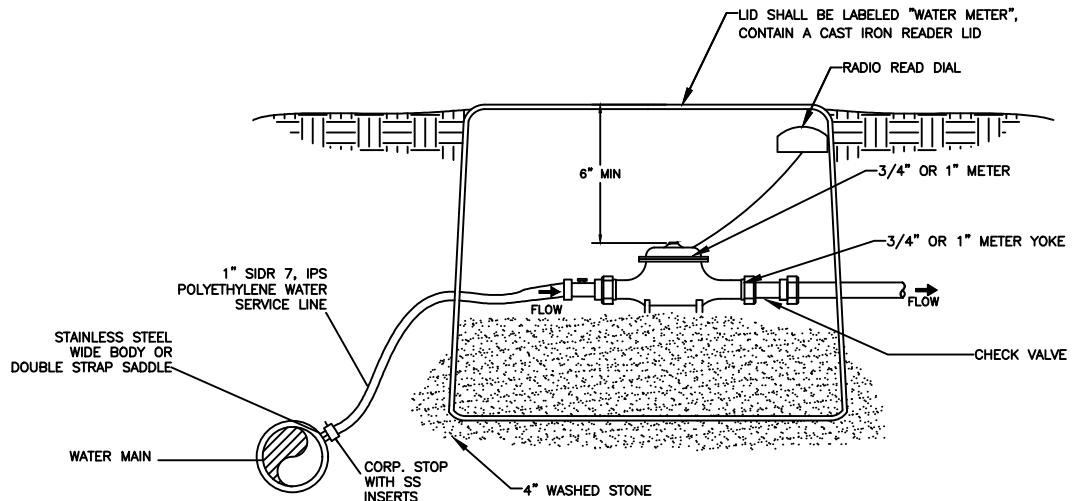


NOTE: ALL TAPS TO BE MADE ON TOP QUARTER OF MAIN.

REVISED		MOORE COUNTY PUBLIC WORKS ENGINEERING DIVISION	WATER TAP	STD NO. PW-11
DATE	DESCRIPTION			



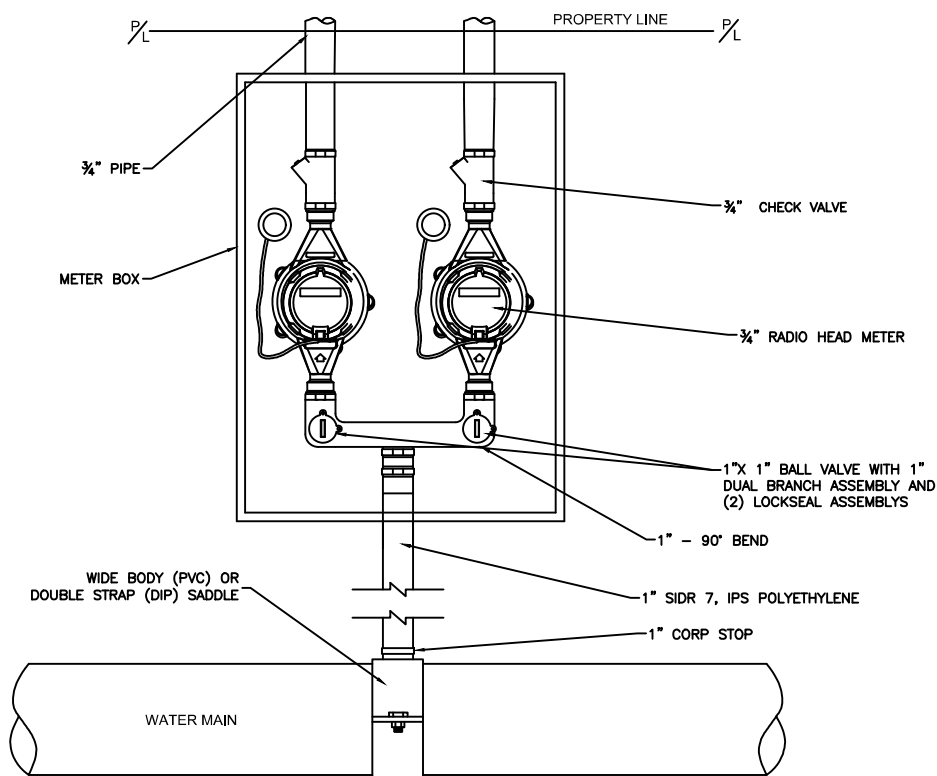
LOCKSEAL ASSEMBLY
CONTRACTOR SHALL INSTALL A
LOCKSEAL ASSEMBLY ON EVERY METER



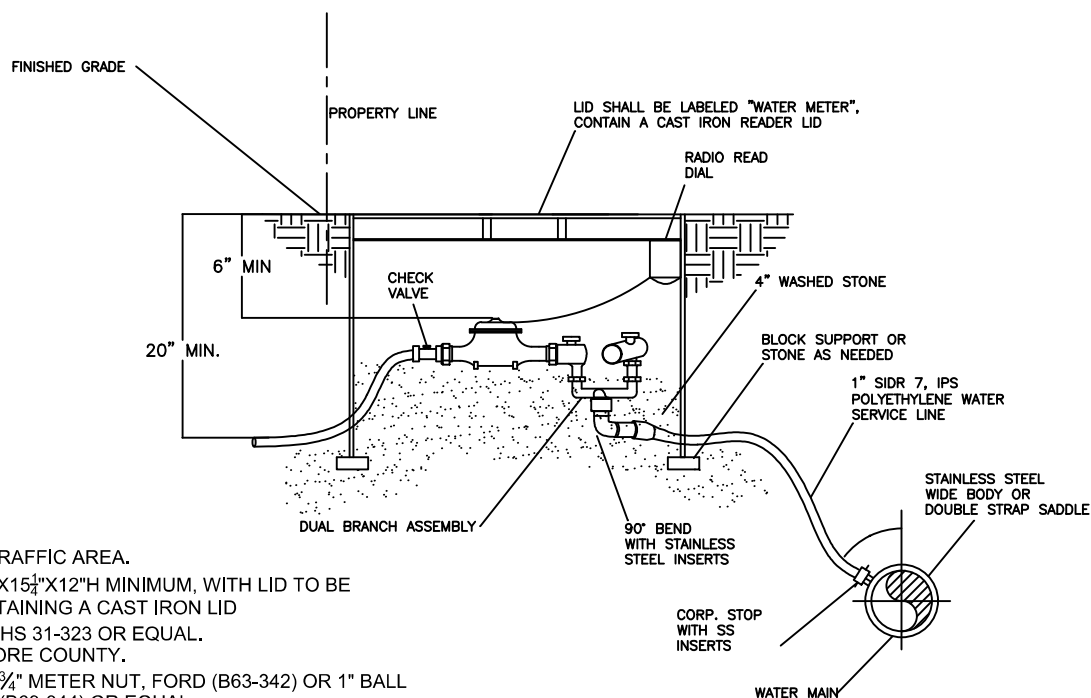
NOTES:

1. METER TO BE PLACED IN NON-TRAFFIC AREA.
2. PLASTIC METER BOX TO BE 21 $\frac{1}{4}$ "X15 $\frac{1}{4}$ "X12"H MINIMUM, WITH LID TO BE LABELED "WATER METER", CONTAINING A CAST IRON LID
3. CHECK VALVE TO BE $\frac{3}{4}$ " FORD HHS 31-323 OR 1" FORD HHS 31-344 OR EQUAL.
4. METER TO BE SUPPLIED BY MOORE COUNTY.
5. VALVE TO BE 1" BALL VALVE BY $\frac{3}{4}$ " METER NUT, FORD (B63-342) OR 1" BALL VALVE BY 1" METER NUT, FORD (B63-344) OR EQUAL.
6. CORP STOP TO BE 1", FORD 1001-4, OR EQUAL.
7. PLUMBER TO INSTALL $\frac{3}{4}$ " OR 1" PIPE FROM CHECK VALVE.
8. MCPW TO INSTALL $\frac{3}{4}$ " OR 1" CHECK VALVE AND $\frac{3}{4}$ " OR 1" METER.
9. MCPW OR CONTRACTOR, AT NEW INSTALLATIONS, TO INSTALL BALL VALVE WITH METER NUT, 1" PIPE, 1" CORP STOP AND SADDLE.
10. STAINLESS STEEL (SS) INSERTS AT CORP STOP & BENDS.
11. METER BOX SHALL HAVE AT LEAST A 3' ALLOWANCE FROM ANY OBSTRUCTIONS.

REVISED		MOORE COUNTY PUBLIC WORKS ENGINEERING DIVISION	SINGLE $\frac{3}{4}$ " OR 1" WATER METER SERVICE	STD NO. PW-12
DATE	DESCRIPTION			
06-19-2023	DELETED TEXT "DOUBLE" ON CHECK VALVE			



LOCKSEAL ASSEMBLY
CONTRACTOR SHALL INSTALL A
LOCKSEAL ASSEMBLY ON EVERY METER



NOTES:

1. METER TO BE PLACED IN NON-TRAFFIC AREA.
2. PLASTIC METER BOX TO BE 21 $\frac{1}{4}$ "X15 $\frac{1}{4}$ "X12"H MINIMUM, WITH LID TO BE LABELED "WATER METER", CONTAINING A CAST IRON LID
3. CHECK VALVE TO BE $\frac{3}{4}$ " FORD HHS 31-323 OR EQUAL.
4. METER TO BE SUPPLIED BY MOORE COUNTY.
5. VALVE TO BE 1" BALL VALVE BY $\frac{3}{4}$ " METER NUT, FORD (B63-342) OR 1" BALL VALVE BY 1" METER NUT, FORD (B63-344) OR EQUAL.
6. CORP STOP TO BE 1", FORD 1001-4, OR EQUAL.
7. PLUMBER TO INSTALL $\frac{3}{4}$ " PIPE FROM CHECK VALVE.
8. MCPW TO INSTALL $\frac{3}{4}$ " CHECK VALVE AND $\frac{3}{4}$ " METER.
9. MCPW OR CONTRACTOR, AT NEW INSTALLATIONS, TO INSTALL BALL VALVE WITH METER NUT, 1" PIPE, 1" CORP STOP AND SADDLE.
10. STAINLESS STEEL (SS) INSERTS AT CORP STOP & BENDS.
11. METER BOX SHALL HAVE AT LEAST A 3' ALLOWANCE FROM ANY OBSTRUCTIONS.

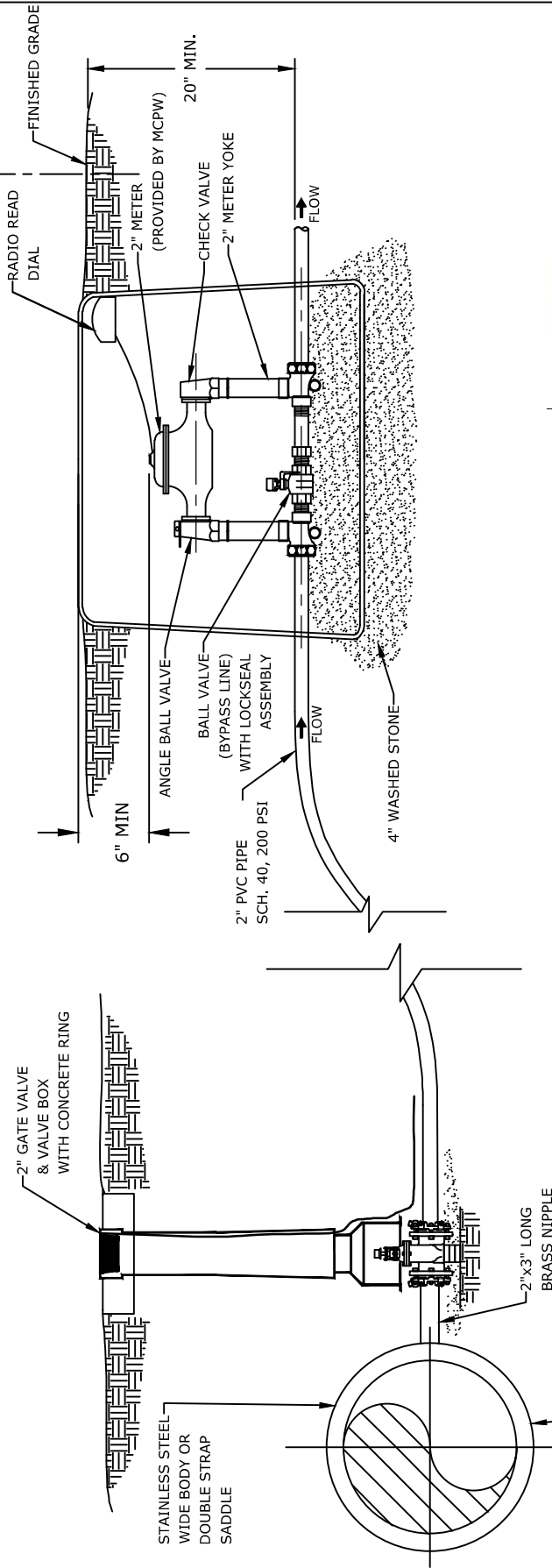
REVISED		MOORE COUNTY PUBLIC WORKS ENGINEERING DIVISION	DUAL $\frac{3}{4}$ " WATER METER SERVICE	STD NO. PW-13
DATE	DESCRIPTION			

REVISED	
DATE	DESCRIPTION

MOORE COUNTY PUBLIC WORKS
ENGINEERING DIVISION

2" WATER METER
SERVICE

STD NO.
PW-14

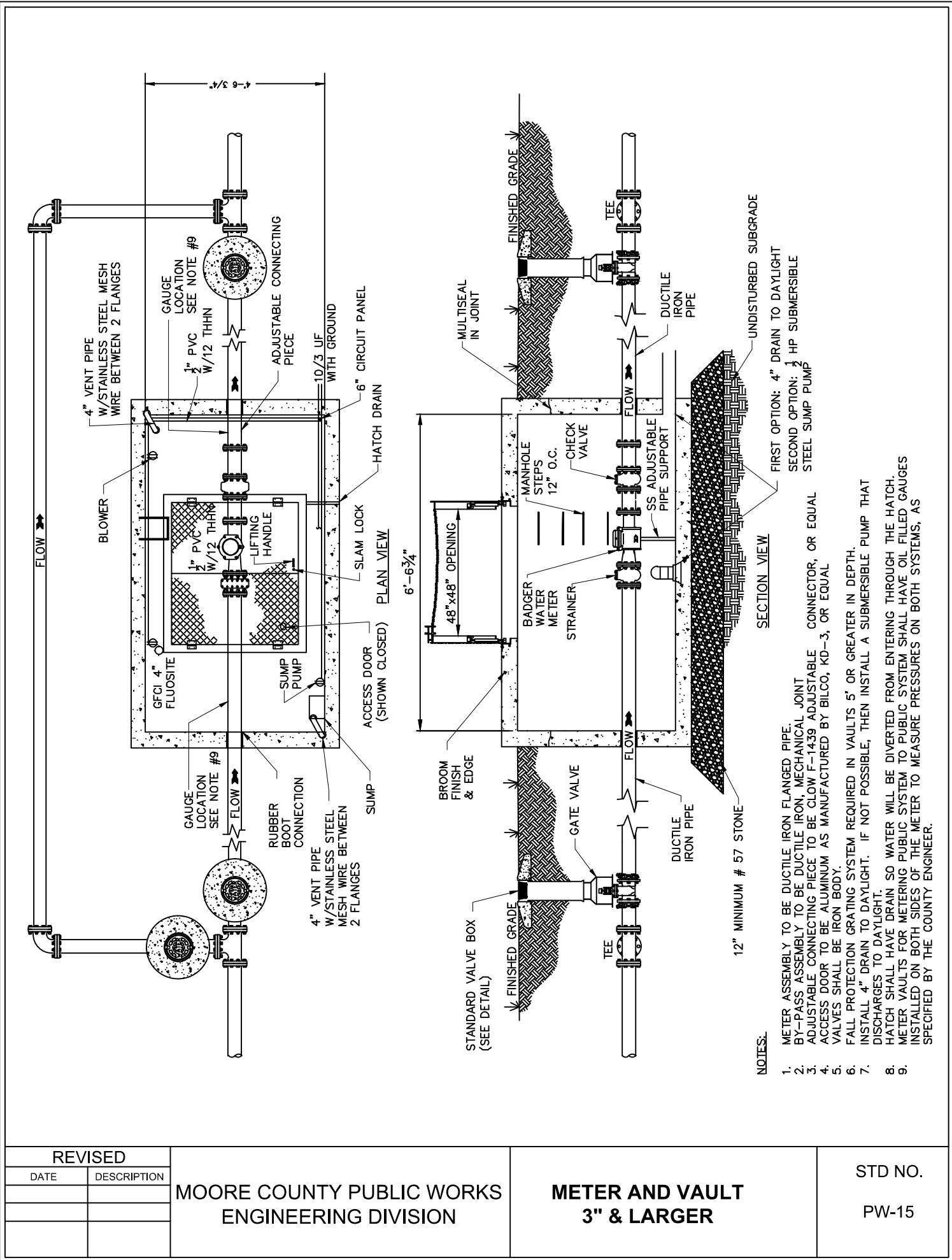


NOTES:

1. METER BOX TO BE PLACED IN A NON-TRAFFIC AREA.
2. PLASTIC METER BOX TO BE 40-1/2" (TOP 32-1/2") x 27-3/4" x 19-3/4" (H) WITH LID CONTAINING A CAST IRON READER LID WITH "WATER METER" CAST IN LID
3. BADGER 2" METER LENGTH IS 15-1/2" .
4. BACKFLOW PREVENTOR IS REQUIRED ON CUSTOMER SIDE OF METER.
5. METER BOX SHALL HAVE AT LEAST 3' ALLOWANCE FROM ANY OBSTRUCTIONS.



LOCKSEAL ASSEMBLY
CONTRACTOR SHALL INSTALL A
LOCKSEAL ASSEMBLY ON EVERY METER



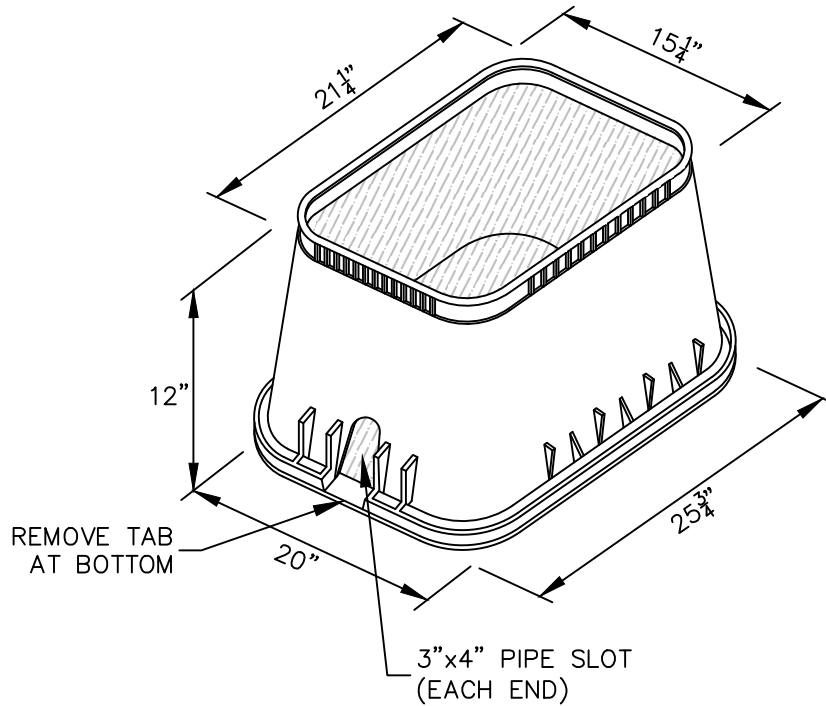
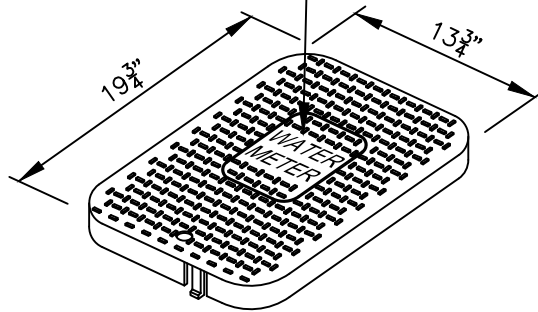
REVISED	
DATE	DESCRIPTION

MOORE COUNTY PUBLIC WORKS
ENGINEERING DIVISION

**METER AND VAULT
3" & LARGER**

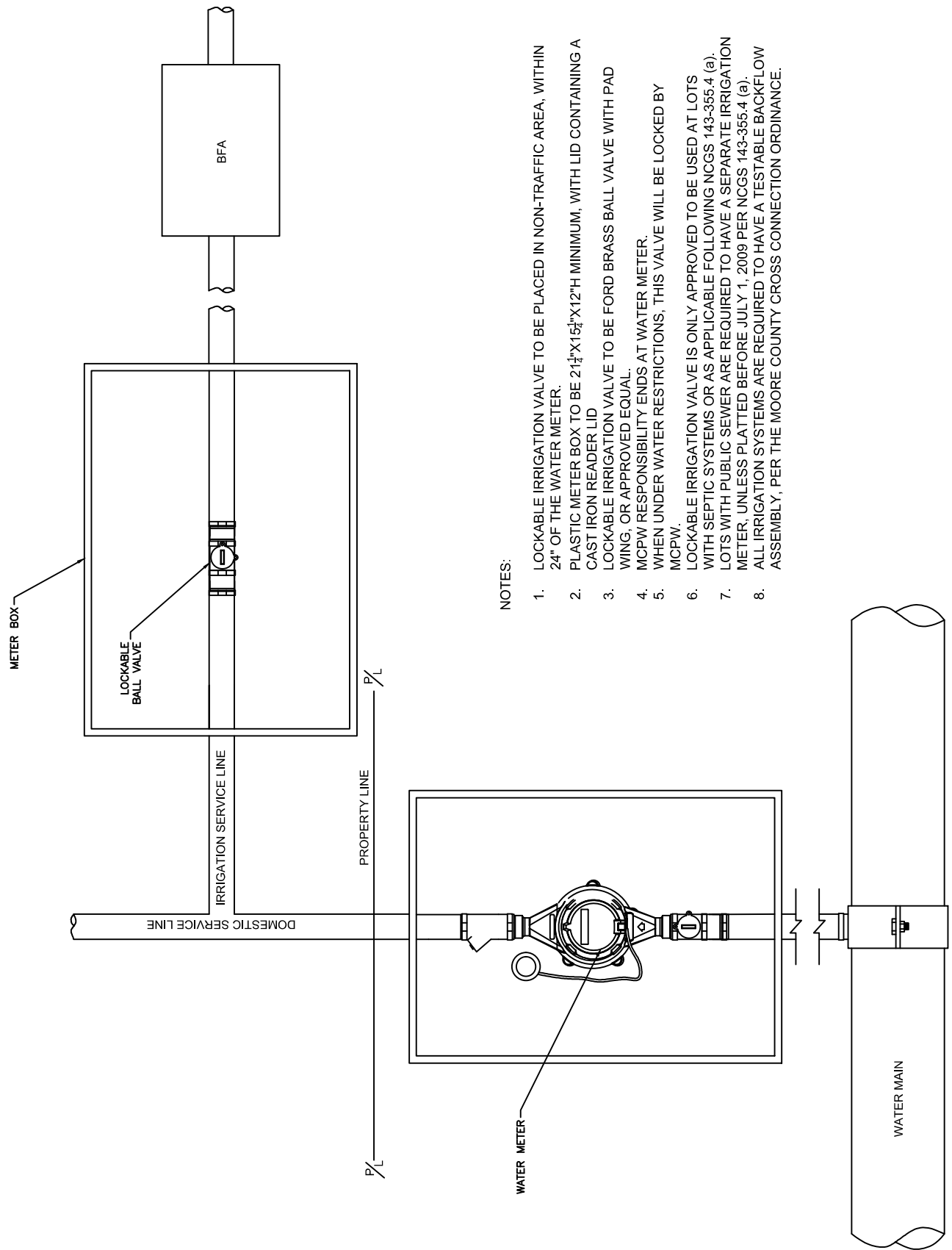
STD NO.
PW-15

CAST IRON READER LID
WITH "WATER METER" CAST
INTO THE LID



NOTE: NON-TRAFFIC RATED
(BLACK PLASTIC)

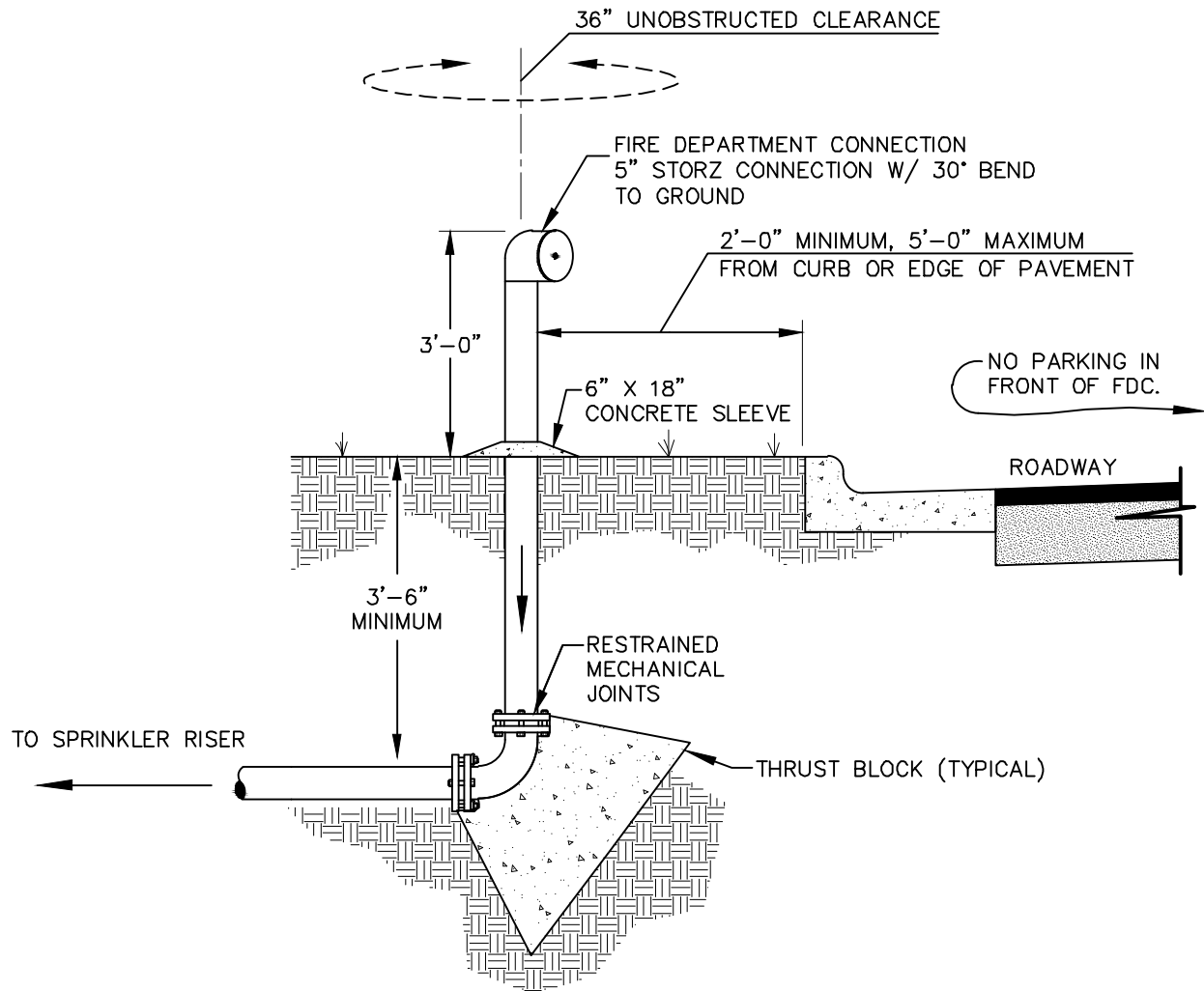
REVISED		MOORE COUNTY PUBLIC WORKS ENGINEERING DIVISION	TYPICAL METER BOX	STD NO. PW-16
DATE	DESCRIPTION			



NOTES:

1. LOCKABLE IRRIGATION VALVE TO BE PLACED IN NON-TRAFFIC AREA, WITHIN 24" OF THE WATER METER.
2. PLASTIC METER BOX TO BE 21 $\frac{1}{4}$ "X15 $\frac{1}{4}$ "X12"H MINIMUM, WITH LID CONTAINING A CAST IRON READER LID
3. LOCKABLE IRRIGATION VALVE TO BE FORD BRASS BALL VALVE WITH PAD WING, OR APPROVED EQUAL.
4. MCPW RESPONSIBILITY ENDS AT WATER METER.
5. WHEN UNDER WATER RESTRICTIONS, THIS VALVE WILL BE LOCKED BY MCPW.
6. LOCKABLE IRRIGATION VALVE IS ONLY APPROVED TO BE USED AT LOTS WITH SEPTIC SYSTEMS OR AS APPLICABLE FOLLOWING NCGS 143-355.4 (a).
7. LOTS WITH PUBLIC SEWER ARE REQUIRED TO HAVE A SEPARATE IRRIGATION METER, UNLESS PLATTED BEFORE JULY 1, 2009 PER NCGS 143-355.4 (a).
8. ALL IRRIGATION SYSTEMS ARE REQUIRED TO HAVE A TESTABLE BACKFLOW ASSEMBLY, PER THE MOORE COUNTY CROSS CONNECTION ORDINANCE.

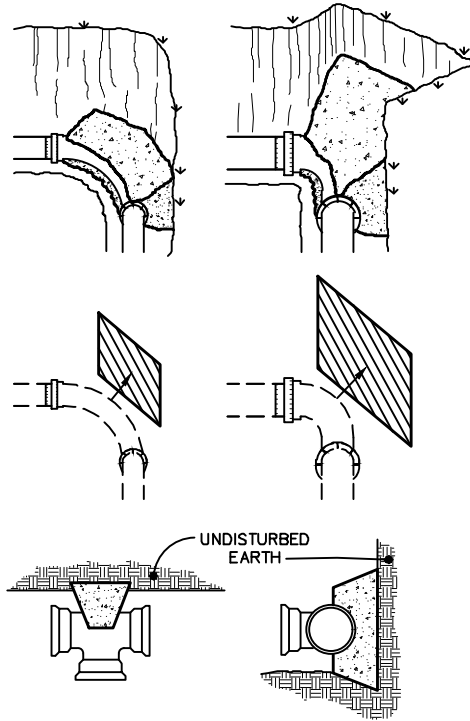
REVISED		MOORE COUNTY PUBLIC WORKS ENGINEERING DIVISION	Lockable Valve for Irrigation (Lots not required to have an Irrigation Meter Only)	STD NO. PW-17
DATE	DESCRIPTION			



NOTES:

- 1) ALL FDC'S SHALL BE WITHIN 50 FEET OF A FIRE HYDRANT.
- 2) ALL FDC'S SHALL BE LOCATED OUTSIDE "COLLAPSE ZONE" AS REQUIRED BY FIRE MARSHAL.
- 3.) ON SHOULDER SECTIONS, FDC SHALL BE 5' (MIN) FROM TOP OF BACKSLOPE.

REVISED		MOORE COUNTY PUBLIC WORKS ENGINEERING DIVISION	FIRE DEPARTMENT CONNECTION	STD NO. PW-18
DATE	DESCRIPTION			

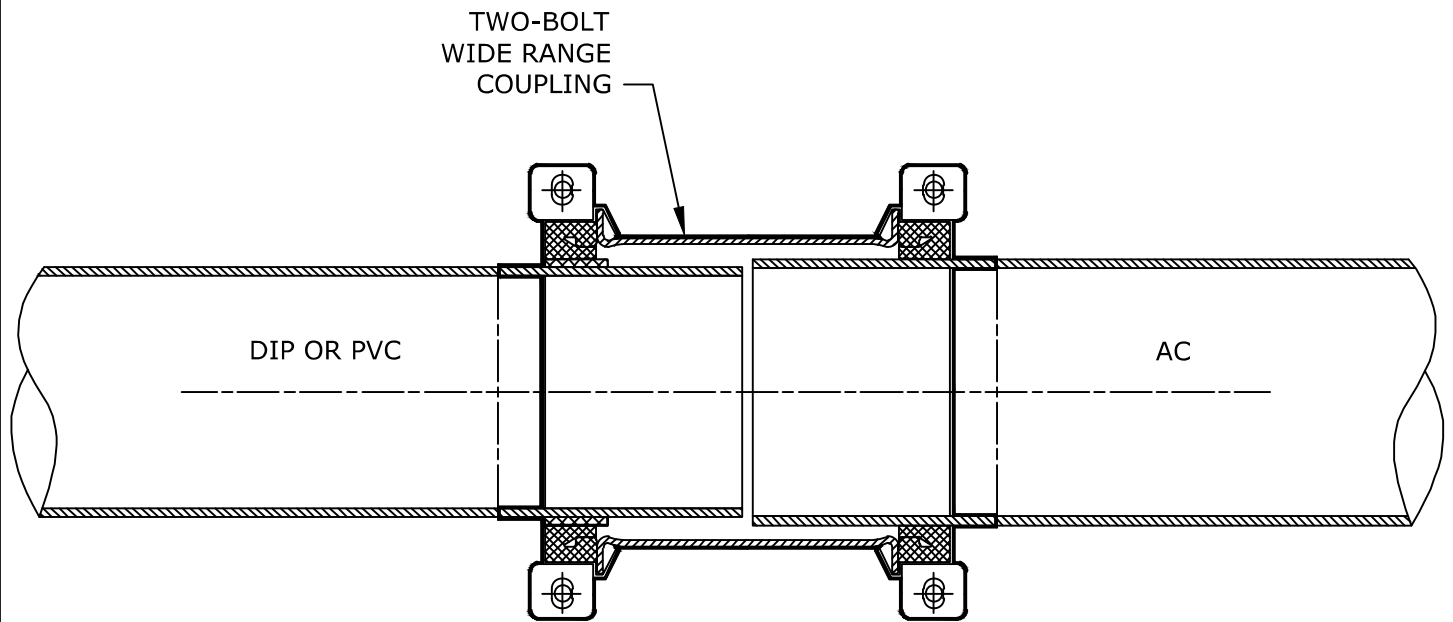


MINIMUM CONCRETE BLOCKING (C.Y.) *					
NOMINAL PIPE DIAMETER INCHES	TEES & DEAD ENDS	90° BEND	45° BEND	22½° BEND	11¼° BEND
4	0.1	0.1	0.1	0.1	0.1
6	0.2	0.2	0.1	0.1	0.1
8	0.2	0.3	0.2	0.1	0.1
10	0.3	0.5	0.3	0.2	0.2
12	0.4	0.6	0.5	0.3	0.3
14	0.7	0.9	0.6	0.5	0.5
16	0.7	0.9	0.6	0.5	0.5
18	0.9	1.2	0.7	0.6	0.6
20	1.1	1.6	1.1	0.7	0.7
24	1.7	2.3	1.6	0.9	0.9

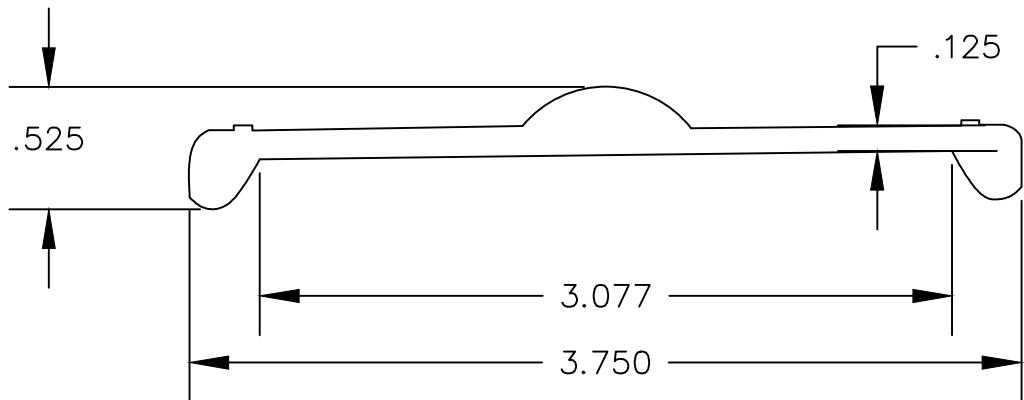
NOTES:

- 1) ALL FITTINGS AND ACCESSORIES SHALL BE WRAPPED WITH 6 MIL POLYETHYLENE PRIOR TO POURING CONCRETE.
- 2) NO CONCRETE SHALL COVER ANY BOLTS OR NUTS.
- 3) POURED CONCRETE SHOULD BE ON THE DRY SIDE.
- 4) CONCRETE SHALL BE 3000 P.S.I. MIN.
- 5) ALL FITTINGS SHALL HAVE MEGA-LUGS OR GRIP RINGS AND APPROPRIATE CONCRETE BLOCKING; UNLESS APPROVED OTHER WISE.

REVISED		MOORE COUNTY PUBLIC WORKS ENGINEERING DIVISION	THRUST BLOCKING	STD NO. PW-20
DATE	DESCRIPTION			



REVISED		MOORE COUNTY PUBLIC WORKS ENGINEERING DIVISION	AC PIPE TO DIP/PVC PIPE TRANSITION	STD NO. PW-21
DATE	DESCRIPTION			



- Vinyl: White (Blue)
- Size: 2-7/8" x 15"
- Colors: "Warning" is blue and set against a white box. All other text and graphics (except "811" logo) are set against a blue background.
- Color 811 Logo: 100% PMS black background/ outline. "Know what's below. Call before you dig is 100% PMS black.
- Shovel: 45% PMS black
- Shovel Highlights: 20% PMS black
- 811 type: Pantone 390C
- Top Arcs: Pantone 370C
- Bottom Arcs: 7505C

REVISED		MOORE COUNTY PUBLIC WORKS ENGINEERING DIVISION	WATER LINE WARNING POST	STD NO. PW-22
DATE	DESCRIPTION			