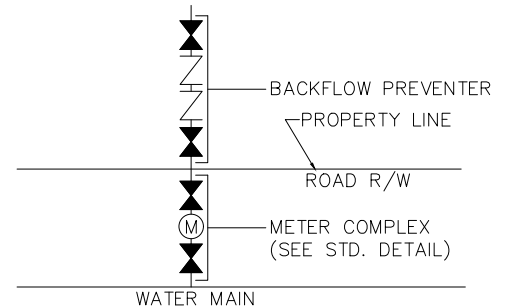
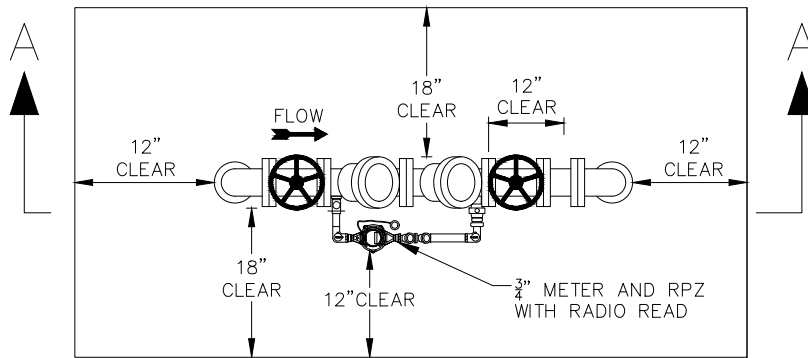


NOTES:

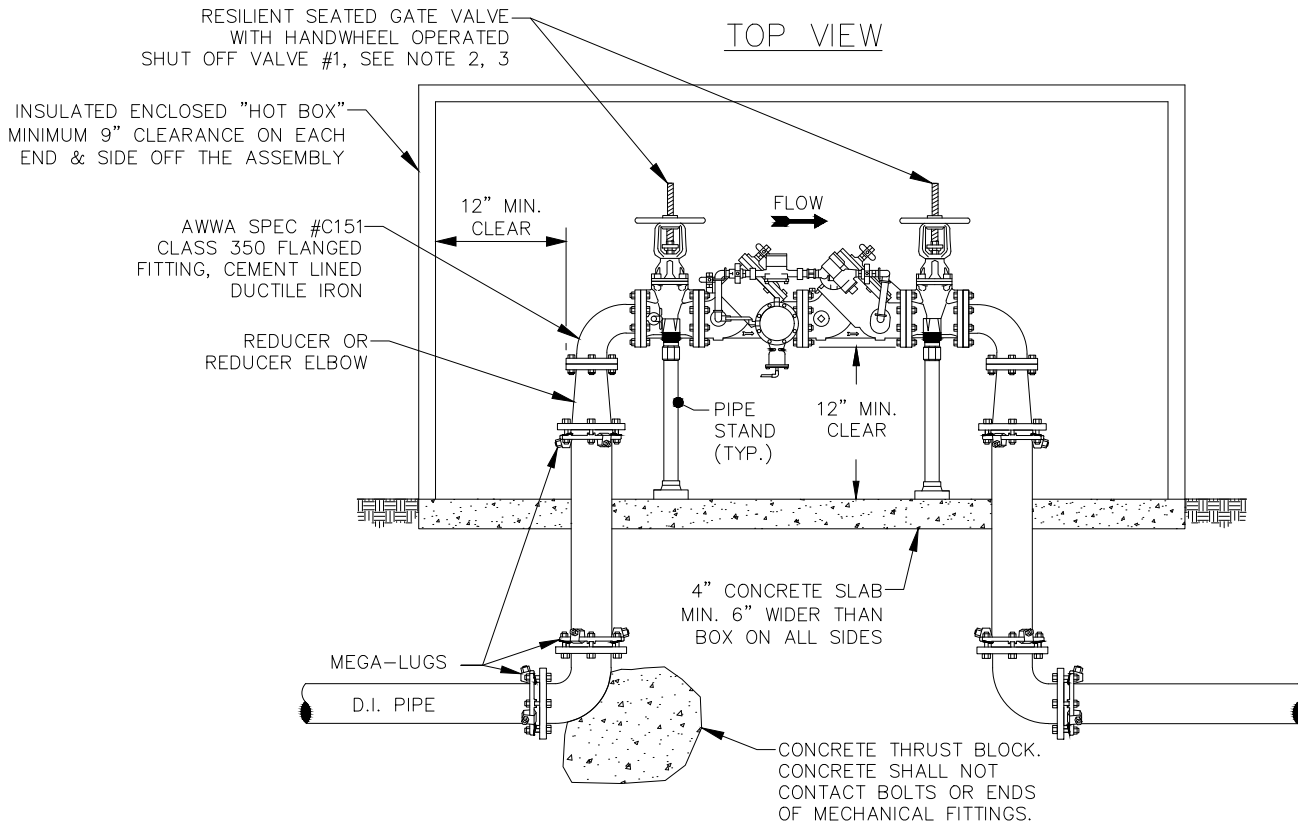
1. REDUCED PRESSURE PRINCIPLE BACKFLOW PREVENTION (RPZ) ASSEMBLY MUST CONFORM TO MCPW SPECIFICATIONS FOR BACKFLOW PREVENTION ASSEMBLIES $\frac{3}{4}" - 2"$.
2. MCPW APPROVED RPZ'S INCLUDE SHUT OFF VALVE #1 AND #2 AS PART OF THE ASSEMBLY. NO SUBSTITUTIONS SHALL BE PERMITTED.
3. TEST COCK #1 SHALL BE UPSTREAM OF SHUT OFF VALVE #1 AND IS PART OF THE APPROVED ASSEMBLY. ALL TEST COCKS MUST BE ON ONE SIDE OR TOP. ASSEMBLIES SHALL BE INSTALLED UPRIGHT AND IN THE HORIZONTAL POSITION.
4. IF OUTDOOR INSTALLATION HAS PROTECTIVE COVER, IT SHALL BE AS SPECIFIED BY MCPW SPECIFICATIONS.
5. ABOVE GROUND INSTALLATIONS MUST BE LOCATED OUTSIDE ZONING SETBACK AREAS.
6. PROTECTIVE COVER TO HAVE A DRAIN PORT TWICE THE SIZE AS THE WATER MAIN.



REVISED		MOORE COUNTY PUBLIC WORKS ENGINEERING DIVISION	REDUCED PRESSURE PRINCIPLE BACKFLOW ASSEMBLY ABOVE GROUND (RPZ) $\frac{3}{4}" - 2"$	STD NO. CC-1
DATE	DESCRIPTION			



TOP VIEW

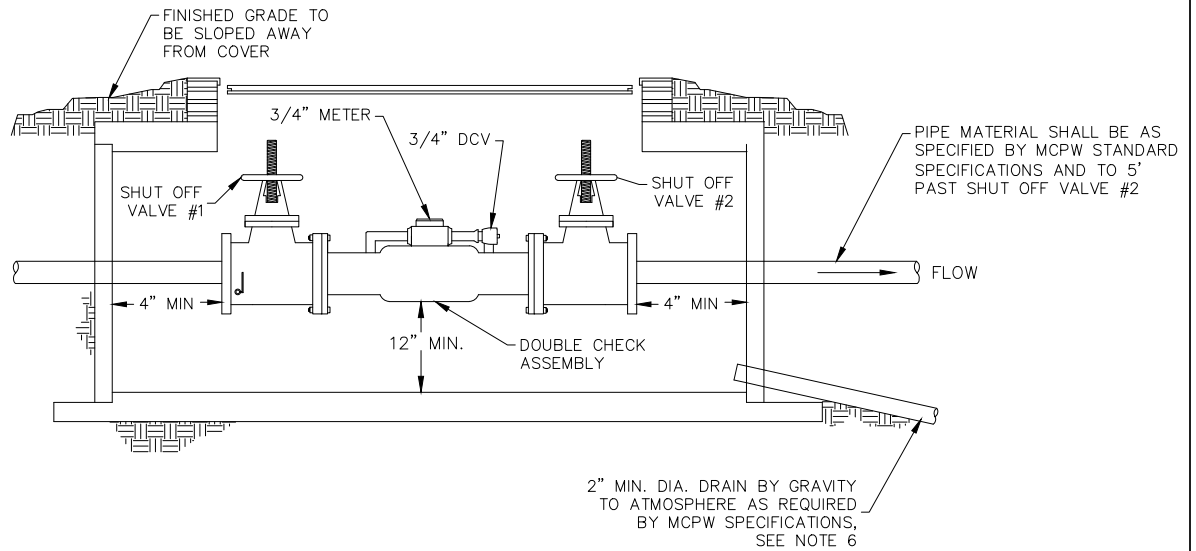


SECTION "A-A"

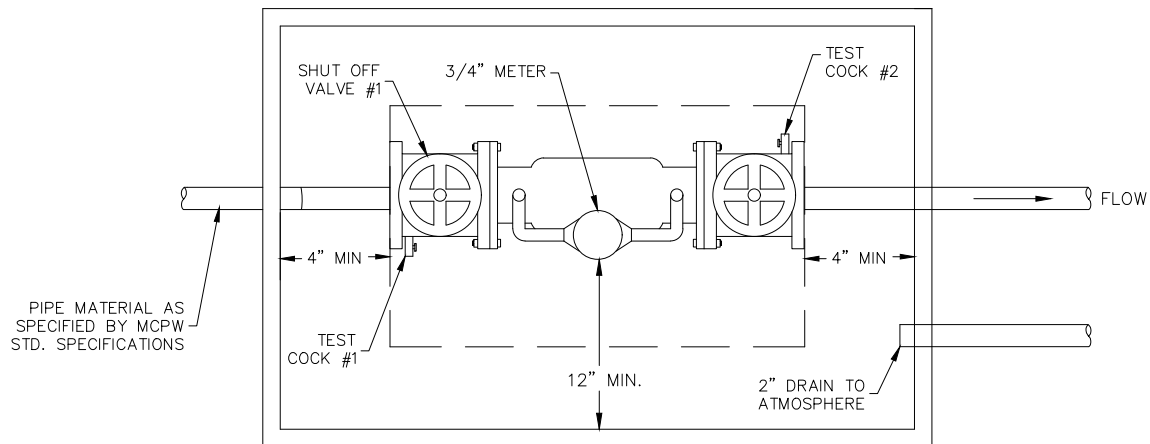
NOTES:

1. REDUCED PRESSURE PRINCIPLE ASSEMBLIES (RPZ) MUST CONFORM TO MCPW SPECIFICATIONS.
2. THE MCPW APPROVED RPZ INCLUDES SHUT OFF VALVES #1 AND #2 AS PART OF THE ASSEMBLY. NO SUBSTITUTIONS SHALL BE PERMITTED.
3. FIRE LINE SERVICES SHALL HAVE OUTSIDE STEM AND YOKE HANDWHEEL OPERATORS.
4. 8" - 10" RPZ SHALL BE SUPPORTED AT CENTER OF HANDWHEEL WITH BRICK PEDESTALS.
5. RESTRAINED JOINTS SHALL BE MEGA-LUG RESTRAINTS OR APPROVED EQUAL.
6. TEST COCK #1 SHALL BE UPSTREAM OF SHUT OFF VALVE #1 AND IS PART OF THE APPROVED ASSEMBLY.
7. IF OUTDOOR INSTALLATION HAS PROTECTIVE COVERING, IT SHALL BE AS SPECIFIED IN MCPW SPECIFICATIONS FOR INSTALLATION OF BACKFLOW PREVENTION ASSEMBLIES.
8. ABOVE GROUND INSTALLATIONS MUST BE LOCATED OUTSIDE ZONING SETBACK AREAS.
9. PROTECTIVE COVER TO HAVE A DRAIN PORT TWICE THE SIZE AS THE WATER MAIN.
10. METAL, BRICK OR CONCRETE PEDESTAL IS REQUIRED UNDER GATE VALVES FOR 2-1/2" & LARGER.

REVISED		MOORE COUNTY PUBLIC WORKS ENGINEERING DIVISION	REDUCED PRESSURE DETECTOR BACKFLOW ASSEMBLY ABOVE GROUND (RPDA) 2-1/2" - 10"	STD NO. CC-2
DATE	DESCRIPTION			



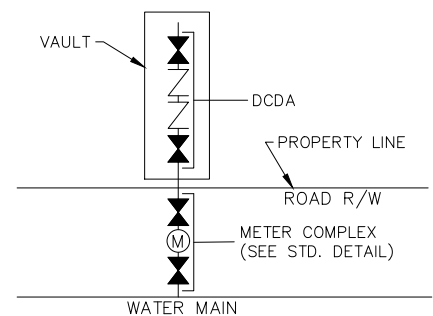
ELEVATION VIEW



PLAN VIEW

NOTES:

1. DCDA MUST CONFORM TO MCPW SPECIFICATIONS FOR BACKFLOW PREVENTION ASSEMBLIES 1 1/2" - 10".
2. MCPW APPROVED DCDA'S INCLUDE SHUT OFF VALVE #1 AND #2. NO SUBSTITUTIONS SHALL BE PERMITTED.
3. VAULT, DOORS, OR COVERS AND SUPPORT OF ASSEMBLY SHALL BE APPROVED BY MCPW.
4. IF DRAINAGE CANNOT BE PROVIDED TO FREE ATMOSPHERE OR STORM DRAINAGE, THE DCDA'S SHALL BE INSTALLED ABOVE GROUND.
5. TEST COCK #1 SHALL BE UPSTREAM OF SHUT OFF VALVE #1 AND IS PART OF THE APPROVED ASSEMBLY. ALL TEST COCKS MUST BE ON ONE SIDE OR TOP. ASSEMBLIES SHALL BE INSTALLED UPRIGHT AND IN THE HORIZONTAL POSITION.
6. DRAIN MAY BE PROVIDED AS SHOWN OR AS FLOOR DRAIN.



REVISED

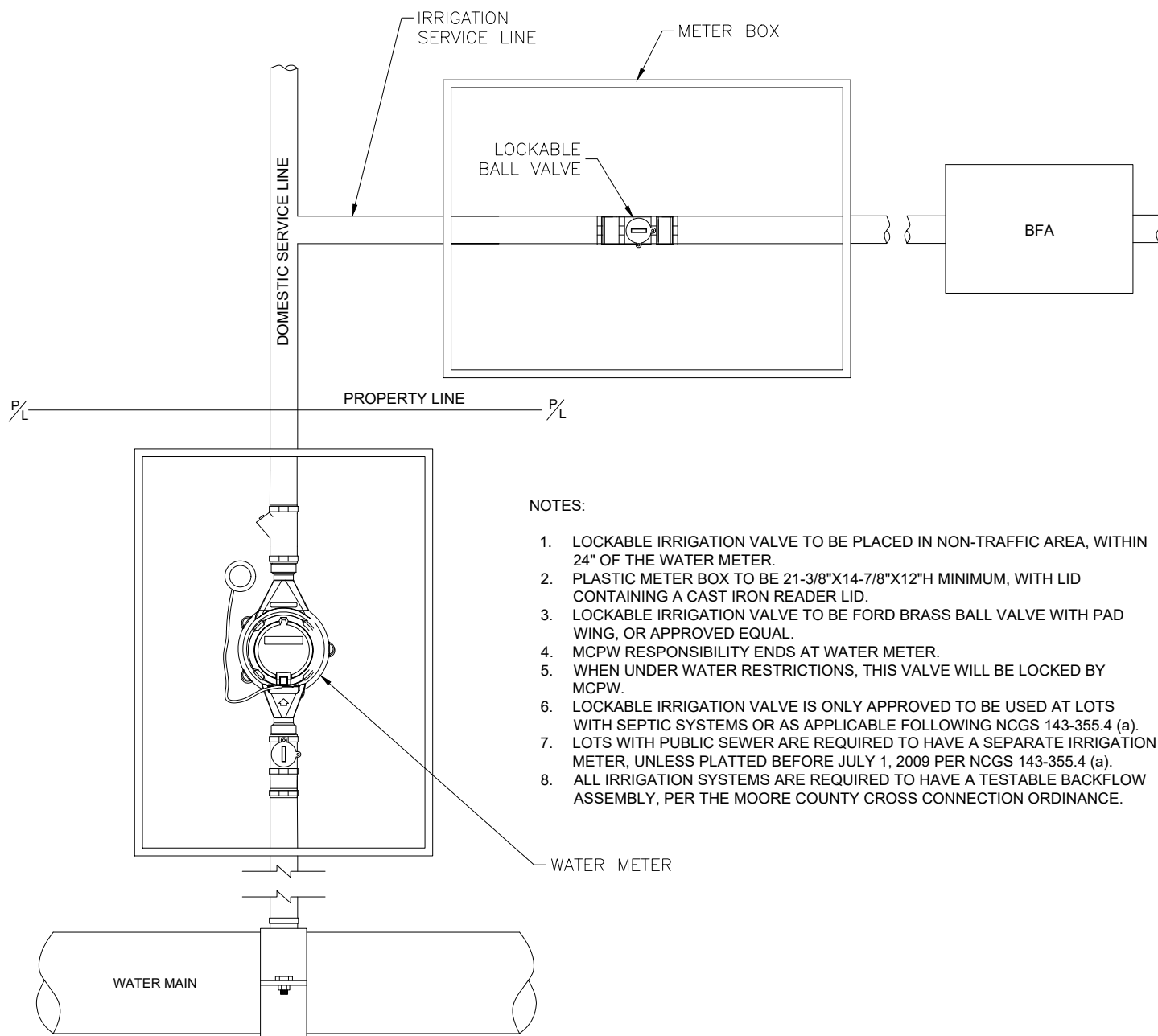
DATE	DESCRIPTION

MOORE COUNTY PUBLIC WORKS
ENGINEERING DIVISION

DOUBLE CHECK DETECTOR
ASSEMBLY IN VAULT 1 1/2" - 10"

STD NO.

CC-3



NOTES:

1. LOCKABLE IRRIGATION VALVE TO BE PLACED IN NON-TRAFFIC AREA, WITHIN 24" OF THE WATER METER.
2. PLASTIC METER BOX TO BE 21-3/8"X14-7/8"X12"H MINIMUM, WITH LID CONTAINING A CAST IRON READER LID.
3. LOCKABLE IRRIGATION VALVE TO BE FORD BRASS BALL VALVE WITH PAD WING, OR APPROVED EQUAL.
4. MCPW RESPONSIBILITY ENDS AT WATER METER.
5. WHEN UNDER WATER RESTRICTIONS, THIS VALVE WILL BE LOCKED BY MCPW.
6. LOCKABLE IRRIGATION VALVE IS ONLY APPROVED TO BE USED AT LOTS WITH SEPTIC SYSTEMS OR AS APPLICABLE FOLLOWING NCGS 143-355.4 (a).
7. LOTS WITH PUBLIC SEWER ARE REQUIRED TO HAVE A SEPARATE IRRIGATION METER, UNLESS PLATTED BEFORE JULY 1, 2009 PER NCGS 143-355.4 (a).
8. ALL IRRIGATION SYSTEMS ARE REQUIRED TO HAVE A TESTABLE BACKFLOW ASSEMBLY, PER THE MOORE COUNTY CROSS CONNECTION ORDINANCE.

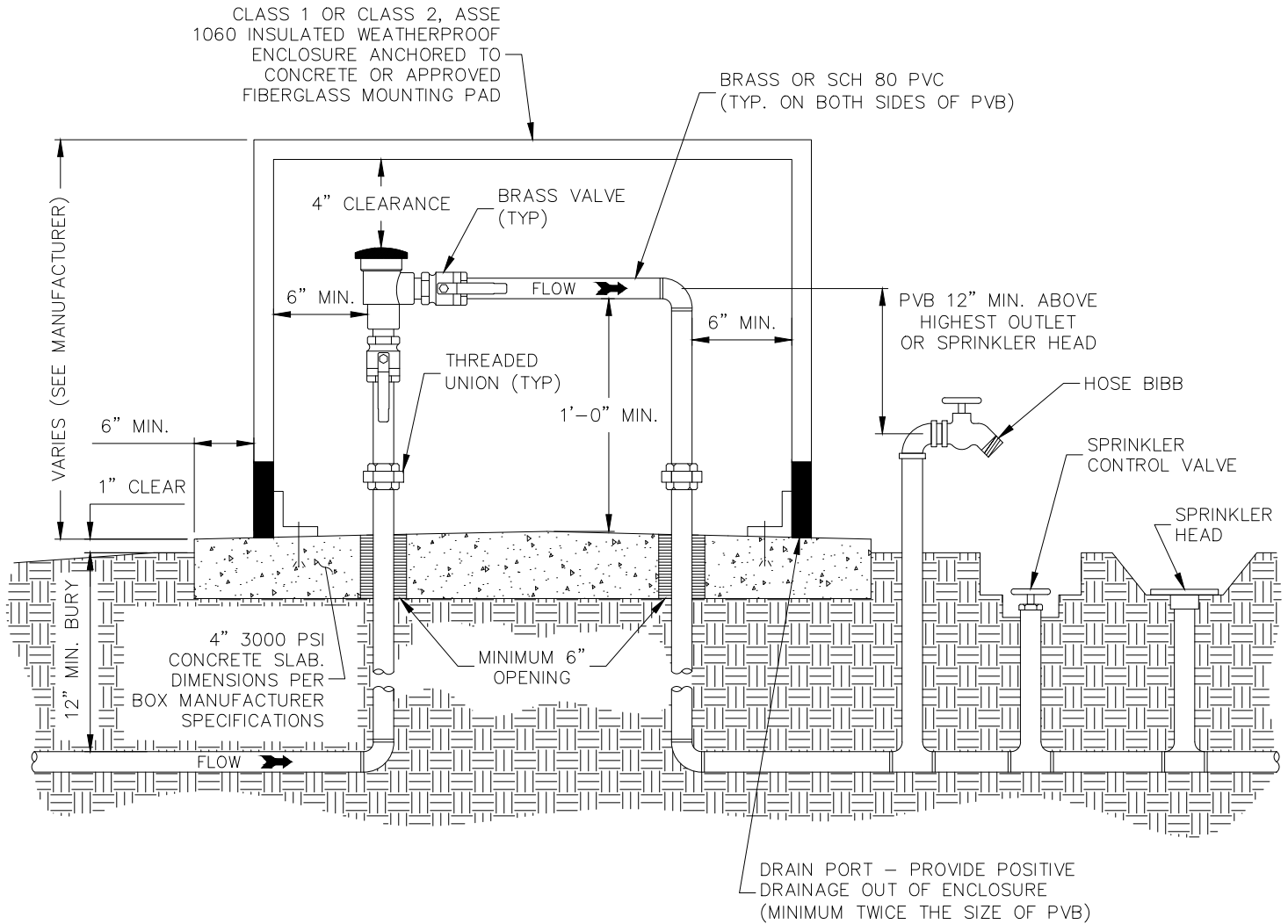
REVISED	
DATE	DESCRIPTION

MOORE COUNTY PUBLIC WORKS
ENGINEERING DIVISION

**Lockable Valve
for Irrigation**
(Lots not required to have an
Irrigation Meter Only)

STD NO.

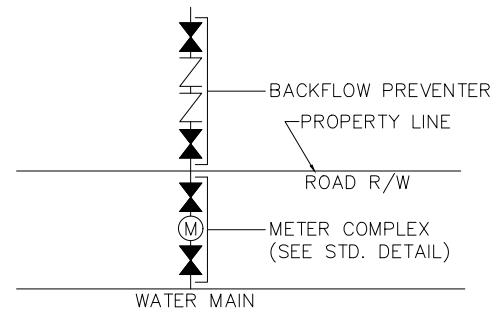
CC-4
(PW-17)



ONLY USE IF NO PUMP IS TO BE USED

NOTES:

1. PRESSURE VACUUM BREAKER BACKFLOW PREVENTION (PVB) ASSEMBLY MUST CONFORM TO MCPW SPECIFICATIONS FOR BACKFLOW PREVENTION ASSEMBLIES $\frac{3}{4}" - 1"$.
2. PVB HEIGHT MUST BE AT LEAST 12" ABOVE THE HIGHEST OUTLET OR SPRINKLER HEAD IN THE SYSTEM.
3. MCPW APPROVED PVB'S INCLUDE SHUT OFF VALVE #1 AND #2 AS PART OF THE ASSEMBLY.
4. TEST COCK #1 SHALL BE UPSTREAM OF SHUT OFF VALVE #1 AND IS PART OF THE APPROVED ASSEMBLY. ALL TEST COCKS MUST BE ON ONE SIDE OR TOP. ASSEMBLIES SHALL BE INSTALLED UPRIGHT AND IN THE HORIZONTAL POSITION.
5. IF OUTDOOR INSTALLATION HAS PROTECTIVE COVER, IT SHALL BE AS SPECIFIED BY MCPW SPECIFICATIONS.
6. ABOVE GROUND INSTALLATIONS MUST BE LOCATED OUTSIDE SETBACK AREAS.
7. PROTECTIVE COVER TO HAVE A DRAIN PORT TWICE THE SIZE AS THE WATER MAIN.



REVISED		MOORE COUNTY PUBLIC WORKS ENGINEERING DIVISION	PRESSURE VACUUM BREAKER BACKFLOW ASSEMBLY ABOVE GROUND (PVB) $\frac{3}{4}" - 1"$	STD NO. CC-5
DATE	DESCRIPTION			