

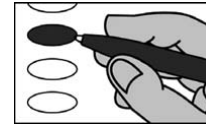
Sample Ballot - Republican Party Primary  
Moore County, North Carolina  
March 3, 2026

**R0004**



**BALLOT MARKING INSTRUCTIONS**

- A. With the marking device provided or a black ball point pen, completely fill in the oval to the left of each candidate or selection of your choice as shown.  
B. If you tear, deface or wrongly mark this ballot, return it to request a replacement.



<b>PARTISAN NOMINATIONS</b>	<b>NC District Court Judge District 29 Seat 2</b> (You may vote for ONE)	
<b>US Senate</b> (You may vote for ONE)	<input type="radio"/> <b>Marissa Curry</b> <input type="radio"/> <b>Sharlene Anderson</b> <input type="radio"/> <b>Beth Tanner</b>	
<input type="radio"/> <b>Margot Dupre</b> <input type="radio"/> <b>Richard Dansie</b> <input type="radio"/> <b>Donald M. (Don) Brown</b> <input type="radio"/> <b>Michael Whatley</b> <input type="radio"/> <b>Elizabeth A. Temple</b> <input type="radio"/> <b>Michele Morrow</b> <input type="radio"/> <b>Thomas Johnson</b>	<b>Moore County Board of Commissioners District III</b> (You may vote for ONE)	
<b>NC Court of Appeals Judge Seat 1</b> (You may vote for ONE)	<input type="radio"/> <b>Cameron Dockery</b> <input type="radio"/> <b>Curtis Self</b>	
<input type="radio"/> <b>Michael C. Byrne</b> <input type="radio"/> <b>Matt Smith</b>	<b>Moore County Clerk of Superior Court</b> (You may vote for ONE)	
<input type="radio"/> <b>Deborah A. Duerring</b> <input type="radio"/> <b>Todd E. Maness</b>		
<b>NC State Senate District 21</b> (You may vote for ONE)	<b>NONPARTISAN NOMINATIONS</b>	
<input type="radio"/> <b>Ray Daly</b> <input type="radio"/> <b>Tom McInnis</b>	<b>Moore County Board of Education Member At-Large</b> (You may vote for TWO)	
<b>NC House of Representatives District 51</b> (You may vote for ONE)	<input type="radio"/> <b>Shannon Davis</b> <input type="radio"/> <b>Don Zawlocki</b> <input type="radio"/> <b>Jim Pedersen</b> <input type="radio"/> <b>Olivia Oxendine</b> <input type="radio"/> <b>Megan Numbers</b> <input type="radio"/> <b>David A. Norris</b> <input type="radio"/> <b>Tucker McKenzie</b> <input type="radio"/> <b>Anthony B. McCauley</b>	
<input type="radio"/> <b>Sherry Lynn Womack</b> <input type="radio"/> <b>Charles M. Taylor</b>		
<b>NC District Court Judge District 29 Seat 1</b> (You may vote for ONE)		
<input type="radio"/> <b>Kimberly Furr Davis</b> <input type="radio"/> <b>Lindsey Smith</b>	<b>End of Ballot</b>	