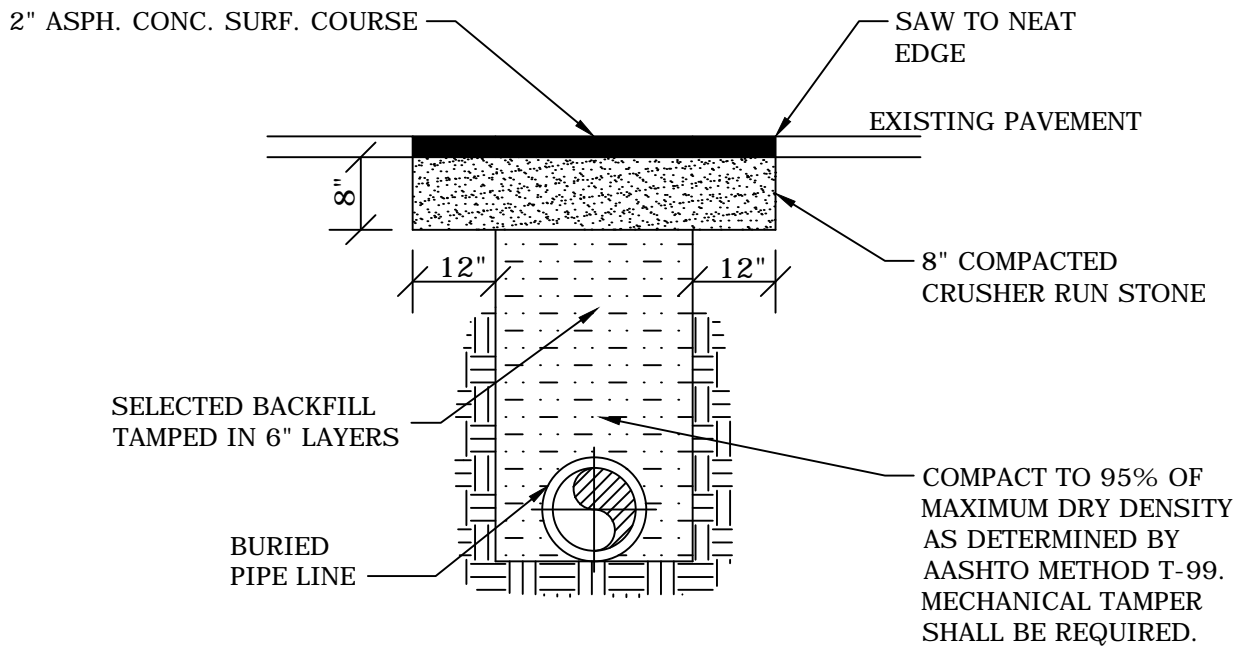


**SECONDARY HIGHWAYS & CITY STREETS**



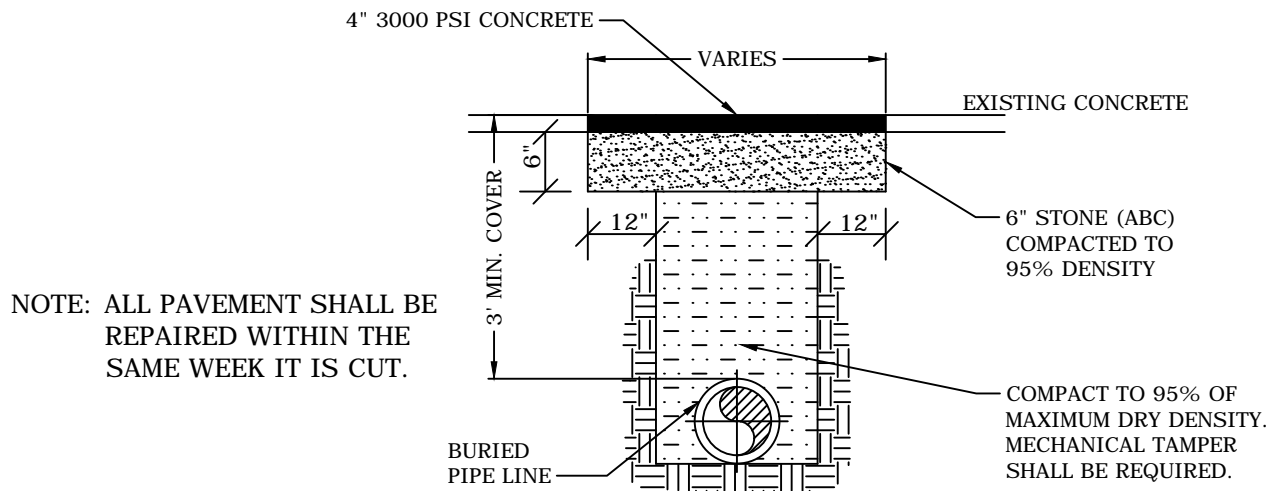
**PRIMARY HIGHWAYS**

TRANSVERSE AND LONGITUDINAL CUTS

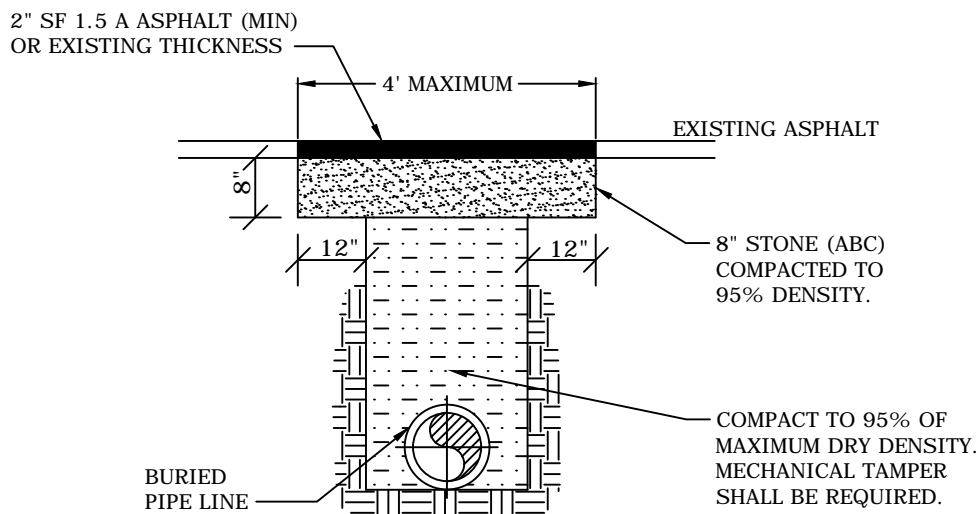
**PAVEMENT REPAIRS FOR NCDOT ROAD OPEN CUTS**

NOT TO SCALE

REVISED		MOORE COUNTY PUBLIC WORKS ENGINEERING DIVISION	ROADWAY PAVEMENT OPEN CUT & PATCH	STD NO.  GC-1
DATE	DESCRIPTION			

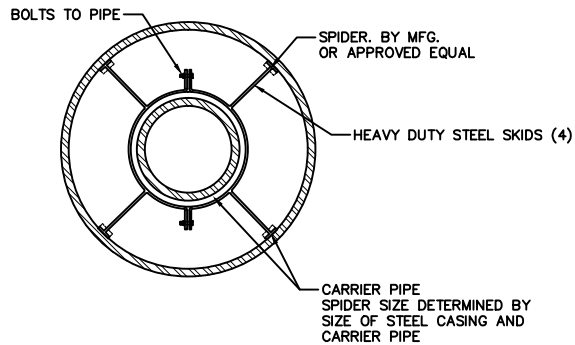
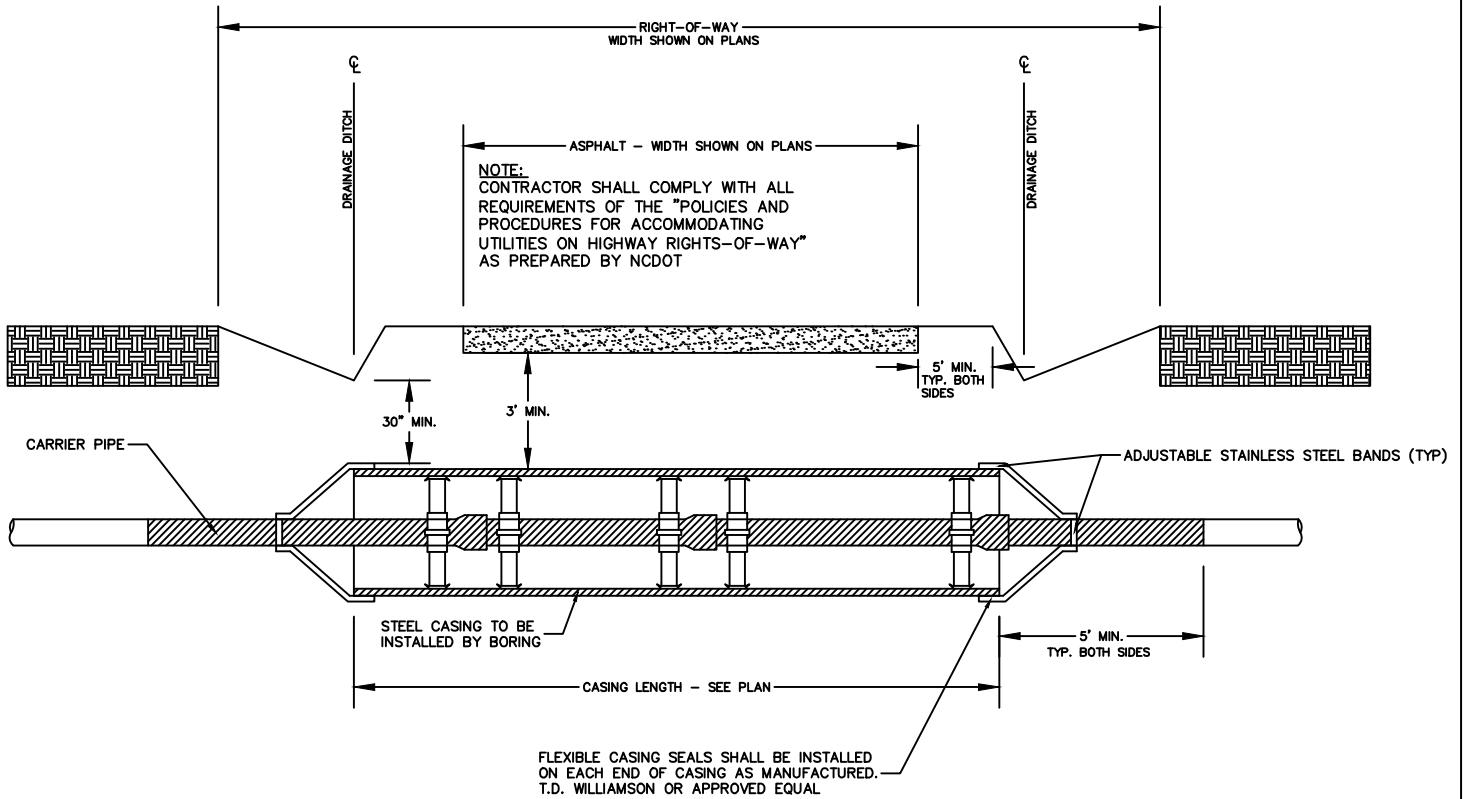


CONCRETE DRIVEWAY OPEN CUT AND PATCH

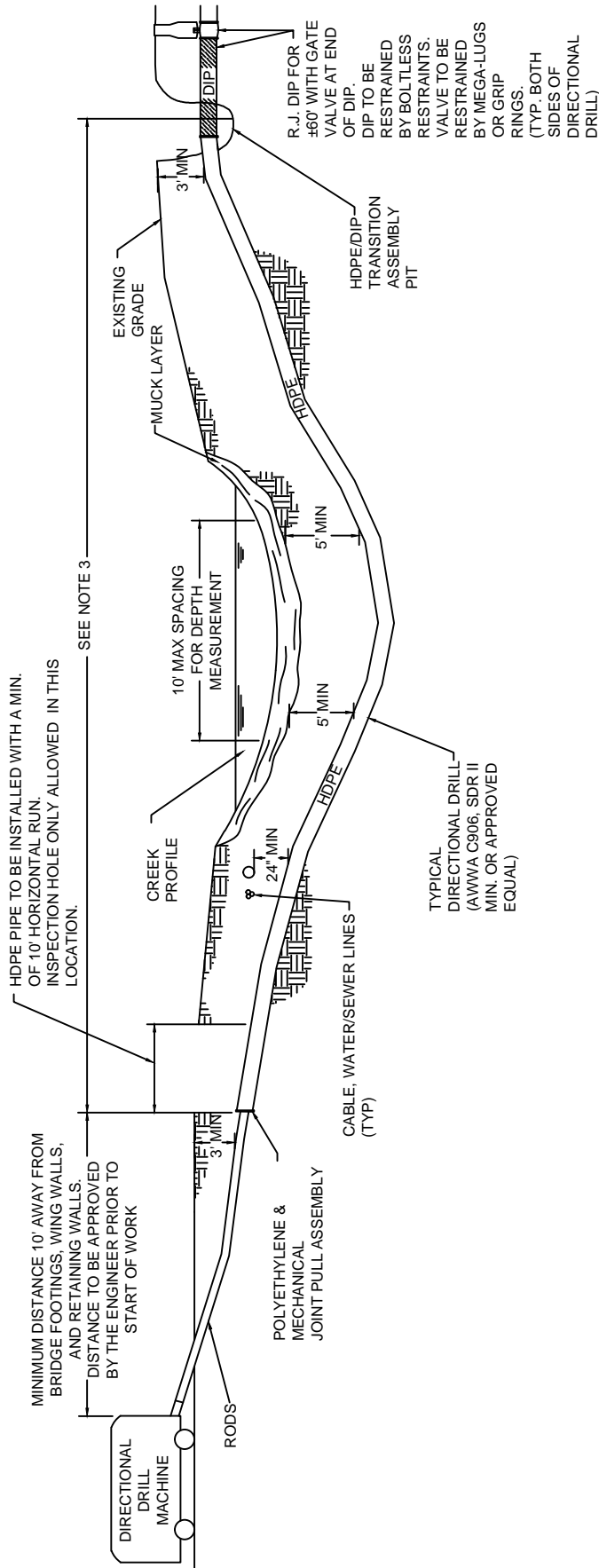


ASPHALT DRIVEWAY OPEN CUT AND PATCH

REVISED		MOORE COUNTY PUBLIC WORKS ENGINEERING DIVISION	DRIVEWAY PAVEMENT OPEN CUT & PATCH	STD NO.  GC-2
DATE	DESCRIPTION			



REVISED		MOORE COUNTY PUBLIC WORKS ENGINEERING DIVISION	STANDARD BORE ENCASEMENT	STD NO. GC-3
DATE	DESCRIPTION			



- NOTES:
1. A PROFILE AND PLAN SHALL BE PROVIDED FROM ENTRY TO EXIT FOR EACH DIRECTIONAL DRILL SECTION BY THE DIRECTIONAL BORE CONTRACTOR.
  2. ALL BORE SECTIONS SHALL BE HYDROSTATICALLY TESTED PER SPECIFICATION STANDARDS UPON COMPLETION OF INSTALLATION AND PRIOR TO PLACING THE WATER MAIN ON-LINE.
  3. LENGTH OF CROSSING, LOCATION OF INSPECTION/OBSERVATION EXCAVATION, NUMBER OF PIPE, LOCATION OF BORE MACHINE, AUGER ENTRANCE LOCATION AND TIE-IN POINTS ARE TO BE APPROVED BY THE ENGINEER PRIOR TO ANY START OF WORK.
  4. THIS DETAIL IS ALSO APPLICABLE TO STREAMS, WETLANDS, LARGE STORM DRAINS, AND SIMILAR APPLICATIONS FOR DIRECTIONAL DRILL WITH POLYETHYLENE PIPE.

REVISED	
DATE	DESCRIPTION

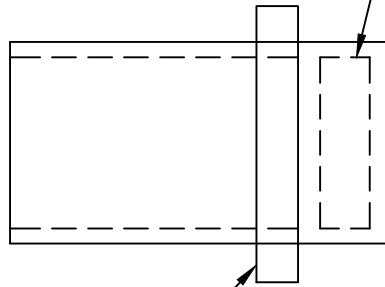
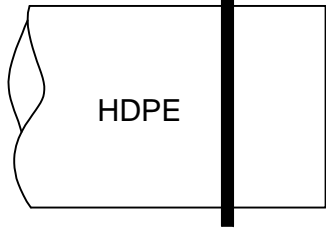
MOORE COUNTY PUBLIC WORKS  
ENGINEERING DIVISION

**DIRECTIONAL DRILL  
HDPE**

STD NO.  
GC-4

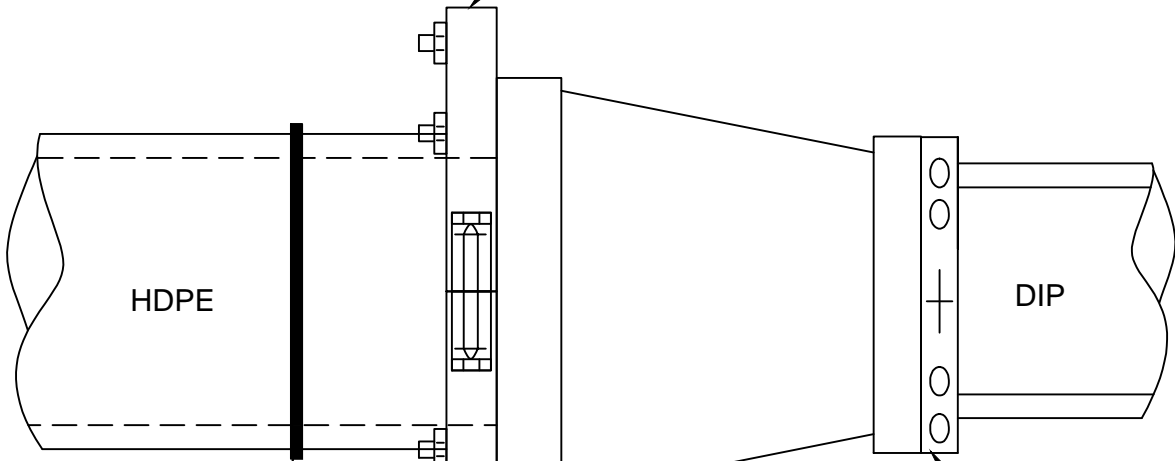
HDPE FUSED JOINT

STAINLESS STEEL SLEEVE INSERT



HDPE/MJ TRANSITION FITTING

SPLIT MJ GLAND



HDPE FUSED JOINT

REDUCER

MEGA - LUG

REVISED		MOORE COUNTY PUBLIC WORKS ENGINEERING DIVISION	HDPE/DIP TRANSITION ASSEMBLY	STD NO. GC-5
DATE	DESCRIPTION			